



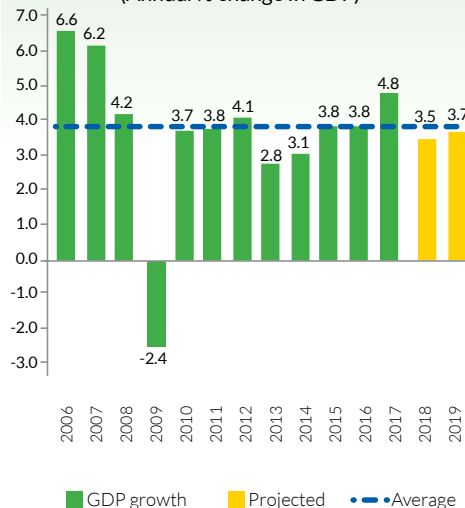
## Basic Indicators

Indicator	2016	2017e
Surface area (sq. km.)	112,492	
Population (in millions) <sup>(1)</sup>	8.7	8.9
Nominal GDP (billion US\$) <sup>(2)</sup>	21.6	23.0
Real GDP growth (%) <sup>(2)</sup>	3.8	4.8
GDP per capita (US\$) <sup>(2)</sup>	2,642.7	2,765.9
Current account balance (%GDP) <sup>(3)</sup>	-2.7	-1.7
Fiscal deficit (%GDP) <sup>(3)*</sup>	0.5	0.8
Inflation (%) <sup>(2)**</sup>	3.3	4.7
Unemployment rate (%) <sup>(1)**</sup>	5.2	4.6
Poverty (% Population) <sup>(1)***</sup>	65.7	68.8

Source: <sup>(1)</sup> National Institute of Statistics (INE); <sup>(2)</sup> Central Bank of Honduras; <sup>(3)</sup> IMF, 2018; \*Non-financial public sector; \*\*End of period inflation rate; \*\*\*Population between 18 and 65 years of age; \*\*\*\*Poverty measured at individual (not household) level.

## Economic Growth

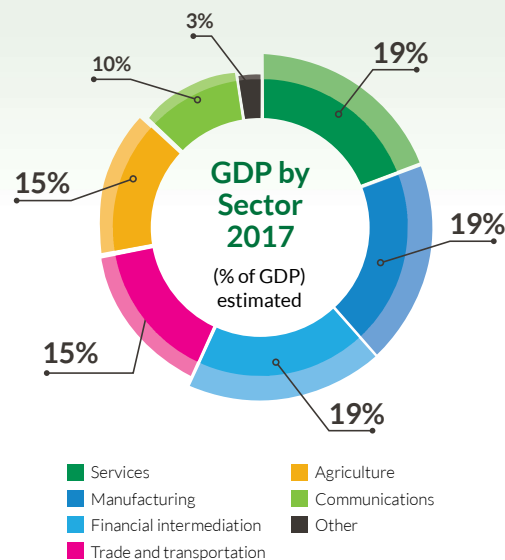
(Annual % change in GDP)



Source: IMF, 2018

## GDP by Sector 2017

(% of GDP) estimated



Source: Central Bank of Honduras, 2017

## IDB Country Strategy (2015-2018)

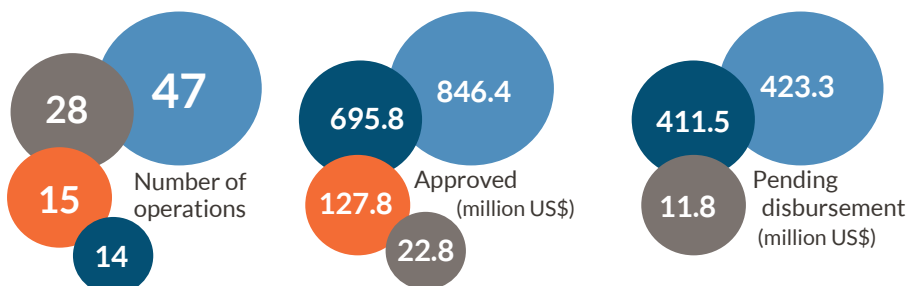
The IDB's strategic areas in the country are:

- Fiscal consolidation
- Sustainability and competitiveness in the energy sector
- Road infrastructure for regional integration
- Social inclusion
- Sustainable development in the Central District



## Active Portfolio\*

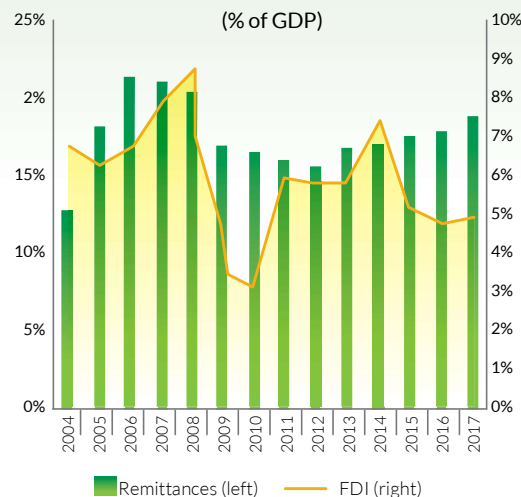
● IDB ● BID Invest ● MIF ● IDBG



\*As of July 2018

## Foreign Direct Investment and Remittances

(% of GDP)



Source: IMF 2018, Central Bank of Honduras 2018

IDB 46%  
World Bank 26%  
CABEI 24%  
Others 4%

## Multilateral Financing

The IDB is the country's primary source of multilateral financing.

External debt balance of multilateral development banks as of March 2018.

## Socioeconomic Challenges

Institutional strengthening

Improving services to strengthen human capital

Fostering production opportunities

Reducing the infrastructure gap and increasing climate change resilience

## Areas of Opportunity

Leveraging the opportunities provided by regional integration

Investing in human capital

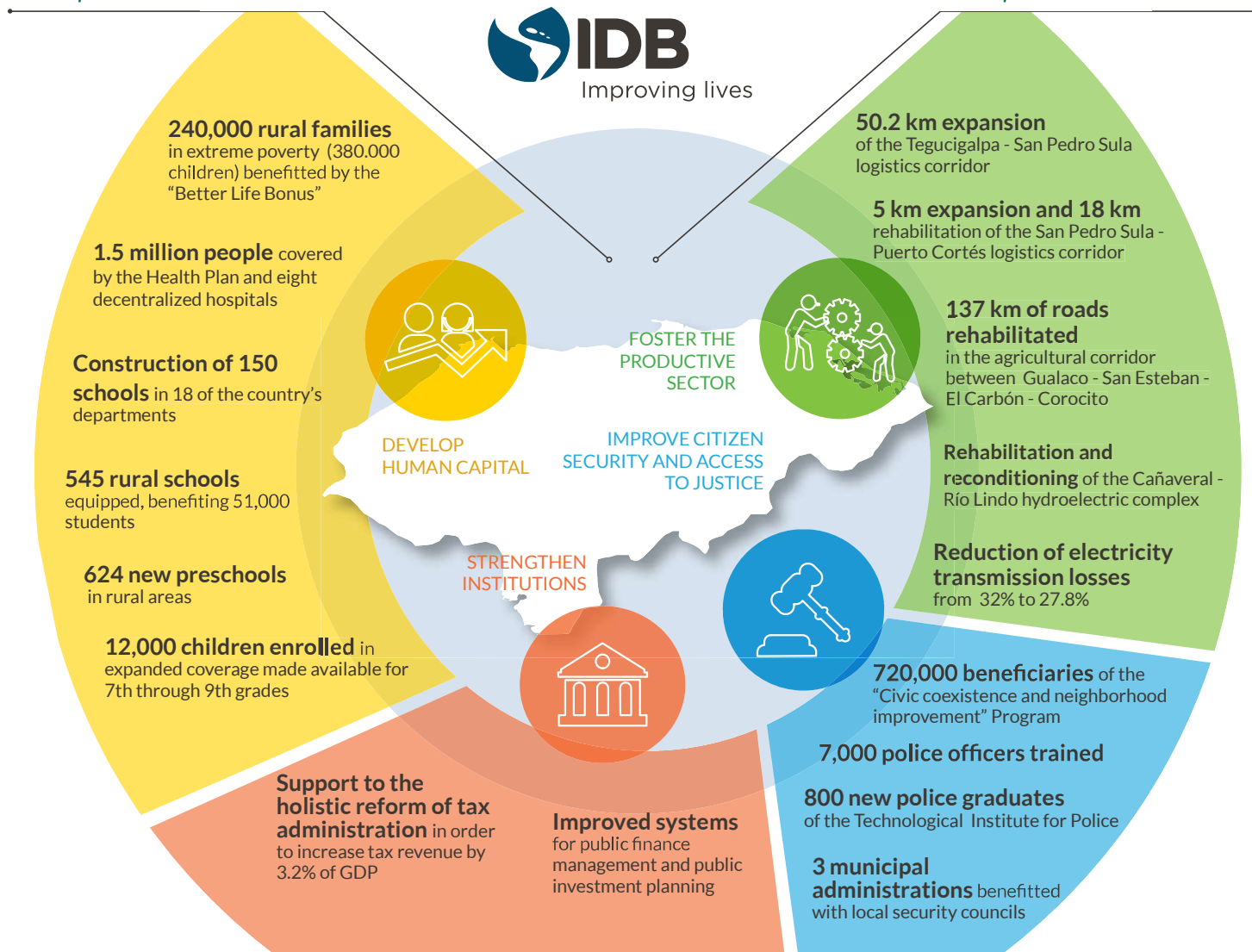
Boosting the tourism sector

Value chain integration

**IDB Portfolio\***  
aligned with the Plan of the Alliance  
for Prosperity of the Northern Triangle

**16 loans**  
**US\$826.8 million**

**17 non-reimbursable technical  
cooperation operations**  
**US\$24.7 million**



## IDB Support for the Plan of the Alliance (2015-2018)\*

Foster the productive sector	Develop human capital	Improve citizen security and access to justice	Strengthen institutions
<ul style="list-style-type: none"> <li>1 strategic sector and employment promotion operation</li> <li>5 logistics and connectivity operations</li> <li>7 energy operations</li> </ul>	<ul style="list-style-type: none"> <li>1 migration, human trafficking and returning migrant reintegration operation</li> <li>3 education operations</li> <li>9 healthcare and social protection operations</li> <li>2 women's services operations</li> </ul>	<ul style="list-style-type: none"> <li>1 civic coexistence and neighborhood improvement operation</li> </ul>	<ul style="list-style-type: none"> <li>3 tax collection and expenditure management operations</li> <li>1 institutions and transparency operation</li> </ul>

\*Includes loan and technical cooperation operations approved and/or implemented between January 2015 and July 2018.