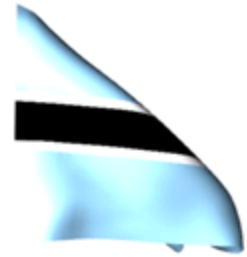


UNIVERSAL BIRTH & DEATH REGISTRATION FOR SECURE IDENTITY SYSTEM: UNDERSTANDING THE BUSINESS

24 September 2014
Conrad Hotel, Seoul Korea

BY:

NEO CORNELIAH LEPANG - DIRECTOR
DEPARTMENT OF CIVIL AND NATIONAL
REGISTRATION - MINISTRY OF LABOUR AND
HOME AFFAIRS - BOTSWANA

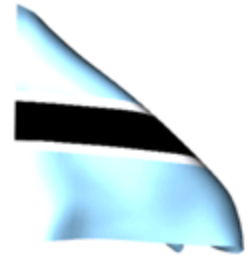


AFRICA

- ❑ Population – 2.06 million; Pop Density 3.6Km/2
- ❑ Country size – 581, 780 sq km, almost the size of France.
- ❑ National Registration to date :2 655, 390



Republic of
Botswana



BACKGROUND

The Right to Identity

- ❑ The right to identity and nationality are firmly embedded in the Universal Declaration of Human Rights and the Convention on the Rights of the Child
- ❑ The possession of an identity is a precondition for full citizenship
- ❑ Botswana Government has obliged to ensure enjoyment of these most fundamental rights through legislation and operation



LEGAL FRAMEWORK AND PROCESSES

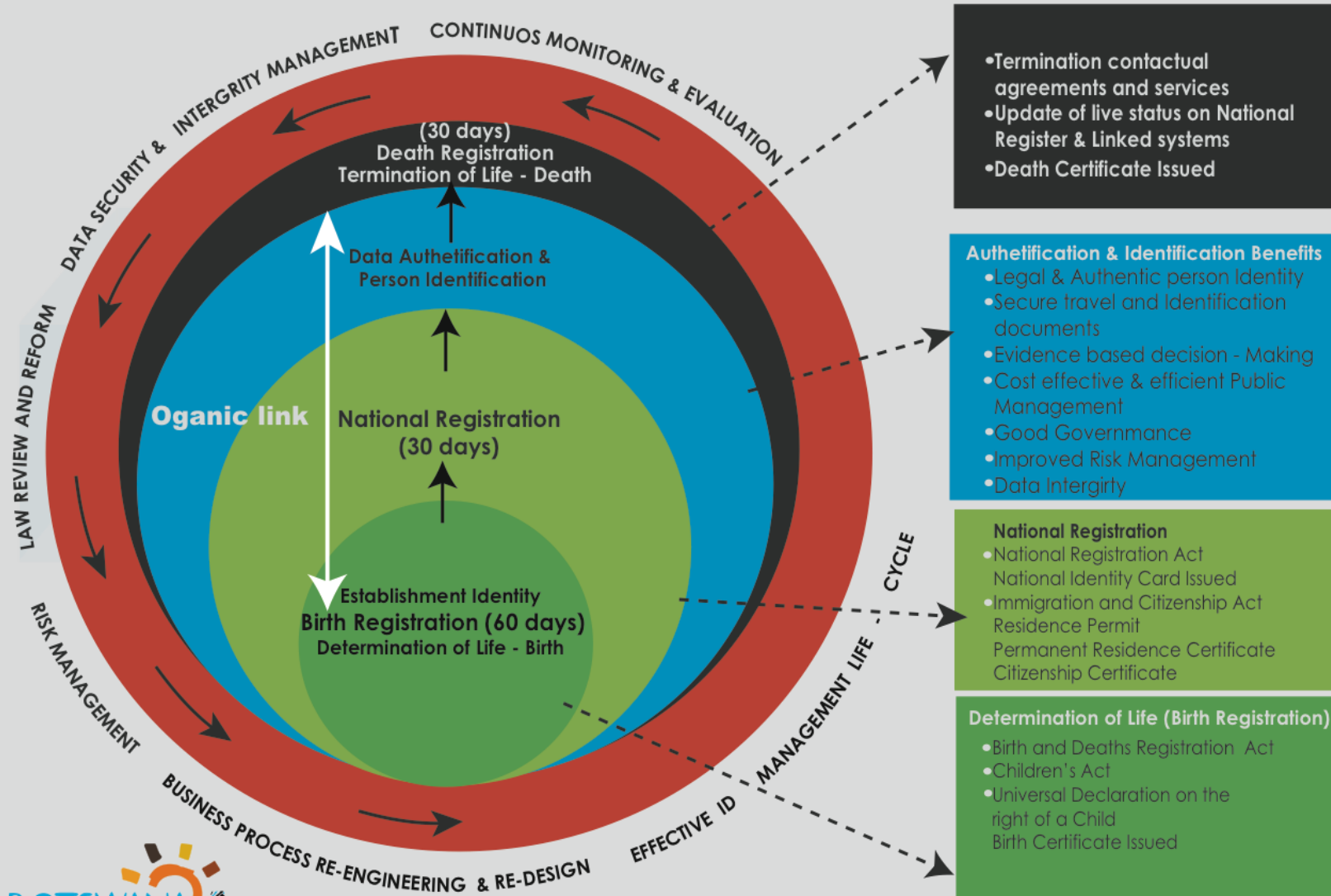
REGISTRATION PRINCIPLES BY BOTSWANA LAW:

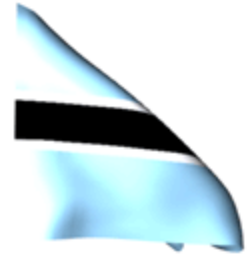
- ☐ Mandatory nature and targeting full coverage
- ☐ Time bound;
- ☐ Continuous and permanent nature;
- ☐ Confidentiality

ORGANISATION AND MANAGEMENT

- ☐ Single registration with unique ID number allocated at birth facilitating multiple use and terminating at death
- ☐ One Registrar for both Civil and National Registration – advantage – synchronization of processes and decision- making
- ☐ Organic Link between registrations of births; National and death;
- ☐ Birth registration a foundation for identity resulting in authentic and secure identity with ID card issued at 16 years
- ☐ On-site registration and immediate issuance of certificates for births and deaths at health facilities

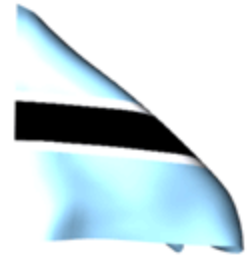
COMPREHENSIVE IDENTITY MANAGEMENT FRAMEWORK: CASE OF BOTSWANA





challenges

- ☐ Delayed and late registrations results in Incomplete registers and undermine data integrity as well as delayed access to public services
- ☐ The high value attached to ID predisposes to risks :
- ☐ The need to constantly maintain set service standards require continuous improvement and standardisation of policy, processes, procedures and resources = requires efficient management of the supply side and resources are not always sufficient
- ☐ Limited resources including expertise
- ☐ Unreported historical deaths



Way forward

- ☐ People Hub or central data repository for authentication and validation of person data **beyond Government** to include Private sector – **project on-going**
- ☐ Project to **enhance** validation of identity using source data to reduce exposure to counterfeit documents
- ☐ Controlled data sharing and authentication through legislation such as Data Protection; Electronic Signatures **now at Bill stage**