

REPORT
to
Management and the Board of Directors
LOW INCOME SHELTER PROGRAM FOUNDATION
PARAMARIBO
regarding
the audit of the Financial Statements of the
Second Low Income Shelter Program for the year 2015

C 16/18 EP/SS



CONTENTS

Independent auditor's opinion/ 1

Financial statements

Statement of cash received and disbursement made for 2015/ 3

Statement of cumulative investments as at December 31, 2015/ 4

Notes to the financial statements of the program/ 5

Management and Board of Directors of
LOW INCOME SHELTER PROGRAM FOUNDATION
PARAMARIBO

Paramaribo, April 26, 2015

1. INDEPENDENT AUDITOR'S OPINION

Report in the Financial Statements

We have audited the accompanying financial statements which comprise the Statement of Cash Flows, the Statement of Cumulative Investments and the notes for the Second Low Income Shelter Program, executed by the Low Income Shelter Foundation and financed with funds from the Inter-American Development Bank under the loan contract no. 2259/OC-SU and local counterpart funds from the Government of the Republic of Suriname as at and for the year ended December 31, 2015.

Management's responsibility for the financial statements

The program's management is responsible for the preparation and fair presentation of these financial statements in accordance with cash basis of accounting, and for such internal control as management determines is necessary for the preparation of financial statements that are free of material misstatement, whether due to fraud or error.

Auditor's Responsibility

Our responsibility is to express an opinion on the accompanying financial statements, based on our audit. We conducted our audit in accordance with International Standards on Auditing, and specific requirements of the Inter-American Development Bank. Those standards require that we comply with ethical requirements, and plan and perform the audit to obtain reasonable assurance about whether the financial statements are free of material misstatement. An audit includes performing procedures to obtain evidence supporting the amounts and disclosures in the financial statements.

The procedures selected depend on the auditor's judgment, including the assessment of the risks of material misstatement of the financial statements, whether due to fraud or error. In making those risk assessments, the auditor considers internal control relevant to the entity's preparation and fair presentation of the financial statements in order to design audit procedures that are appropriate in the circumstances, but not for the purpose of expressing an opinion on the effectiveness of the program's internal control. An audit also includes assessing the accounting principles used and significant estimates made by program's management as well as evaluating the overall financial statement presentation. We believe that the audit evidence obtained is sufficient and appropriate to provide a basis for our opinion.

Emphasis of matter

As described in Note 2, the Statement of Cash Flows and the Statement of Cumulative Investments were prepared using the cash basis of accounting in accordance with the Cash Basis IPSAS: Financial Reporting under the Cash Basis of Accounting. Cash basis accounting recognizes transactions and acts only when the cash (and/or cash equivalent) is received or disbursed by the entity, and not when they give rise to, accrue or originate rights or obligations although there was no cash movement.

Opinion financial statements

In our opinion, the financial statements referred to above present fairly, in all material respects, the cash flows for the year 2015 and the cumulative investments for the Second Low Income Shelter Program as at December 31, 2015, in accordance with the basis of accounting described in the paragraph above and the accounting policies described in Note 2.

Report on other legal and regulatory requirements

We did not observe any situations suggesting noncompliance with the financial clauses in Inter-American Development Bank loan contract no. no 2259/OC-SU during the period reviewed by us.

For BDO Assurance N.V.

A handwritten signature in blue ink, appearing to read 'W.K. Achthoven', is written over a horizontal line.

W.K. Achthoven RA
Partner

**SECOND LOW INCOME SHELTER PROGRAM
PARAMARIBO**

STATEMENT OF CASH FLOWS FOR THE YEAR ENDED DECEMBER 31, 2015
(Expressed in US Dollars)

	2015			2014		
Cash received	IDB	GOS	TOTAL	IDB	GOS	TOTAL
Accumulated cash at beginning of year	10,339,803	1,177,798	11,517,601	6,689,263	915,596	7,604,859
Activity during the year						
Replenishment of the revolving fund	4,661,698	-	4,661,698	3,650,540	-	3,650,540
GOS additional fund received	-	-	-	-	259,794	259,794
Interest received	-	4,659	4,659	-	2,408	2,408
Total cash received	<u>15,001,501</u>	<u>1,182,457</u>	<u>16,183,958</u>	<u>10,339,803</u>	<u>1,177,798</u>	<u>11,517,601</u>
Disbursements made						
Cumulative cash at beginning of period	9,991,470	625,514	10,616,984	6,453,722	396,320	6,850,042
Activity during the year						
Investment GOS	-	190,613	190,613	-	229,194	229,194
Revolving fund replenishment	4,958,951	-	4,958,951	3,506,081	-	3,506,081
Revolving fund pending replenishment	-	-	-	31,667	-	31,667
Total cash disbursements	<u>14,950,421</u>	<u>816,127</u>	<u>15,766,548</u>	<u>9,991,470</u>	<u>625,514</u>	<u>10,616,984</u>
Available cash as at end of year	<u>292,077</u>	<u>254,146</u>	<u>546,223</u>	<u>433,619</u>	<u>516,554</u>	<u>950,173</u>

The accompanying notes are an integral part of the financial statement.



**SECOND LOW INCOME SHELTER PROGRAM
PARAMARIBO**

STATEMENT OF CUMULATIVE INVESTMENTS AS AT DECEMBER 31, 2015
(Expressed in US Dollars)

COI	Investment category	Accrued at end December 31, 2014			Movement during 2015			Accrued at end December 31, 2015		
		IDB	GOS	TOTAL	IDB	GOS	TOTAL	IDB	GOS	TOTAL
1.0	Consolidation of the subsidy model									
1.1	Subsidies to Coastal and Urban areas:									
1.1.1	New Core House	270,000	-	270,000	219,000	-	219,000	489,000	-	489,000
1.1.2	House improvement and extension	7,908,146	-	7,908,146	3,224,854	12,438	3,237,292	11,133,000	12,438	11,145,438
1.2	Subsidies to the interior:									
1.2.1	New core house	67,675	-	67,675	862,966	42,293	905,259	930,641	42,293	972,934
1.3	Institutional Strengthening of Program Partners									
1.3.1	Training to NGO's	9,450	60	9,510	-	-	-	9,450	60	9,510
1.3.2	NGO's & IFI's services	327,880	93,506	421,386	199,027	36,338	235,365	526,907	129,844	656,751
2.0	Pilot development									
2.1	Pilot design and related investment									
2.2	Execution/monitoring									
3.0	Strengthening of LISP Foundation and Program Management									
3.1	Staff	1,084,608	173,829	1,258,437	298,750	16,707	315,457	1,383,358	190,536	1,573,894
3.2	Equipment	69,628	36,563	106,191	-	1,965	1,965	69,628	38,528	108,156
3.3	Training	14,682	428	15,110	62,145	-	62,145	76,827	428	77,255
3.4	Program administration	187,992	287,328	475,320	34,995	77,397	112,392	222,987	364,725	587,712
3.5	Program promotion and outreach	18,866	31,045	49,911	5,855	1,661	7,516	24,721	32,706	57,427
4.0	Contingencies									
5.0	Evaluation and auditing	41,628	2,755	44,383	51,359	1,814	53,173	92,987	4,569	97,556
	Total	<u>10,000,555</u>	<u>625,514</u>	<u>10,626,069</u>	<u>4,958,951</u>	<u>190,613</u>	<u>5,149,564</u>	<u>14,959,506</u>	<u>816,127</u>	<u>15,775,633</u>

SECOND LOW INCOME SHELTER PROGRAM PARAMARIBO

NOTES TO THE FINANCIAL STATEMENTS FOR THE YEAR ENDED DECEMBER 31, 2015

Note 1. Program Description

1.1 Introduction

The Government of Suriname signed the loan contract no. 2259/OC-SU for the execution of the Low-Income Shelter Program II (LISP II) with the Inter-American Development Bank on March 26, 2010. The loan agreement embraces the cooperation between the public and the private sector and deals with a long term loan to the Republic of Suriname of USD 15 million by the IDB. Suriname's initial minimum own contribution was USD 314,000, bringing the total available amount to be invested over a period of five (5) years for the construction and renovation of houses for low and moderate-income families and managerial expenses to USD 15,314,000. During the execution of LISP II additional funds of USD 1,169,825 were received from the Government of Suriname (see note 6).

The First Low Income Shelter Program (LISP I/SU0017) was executed in Suriname between 2003 and 2009. The program was based on the allocation of a direct up-front subsidy to LISP I income beneficiaries, for the purchase and/or construction of a new house, or for the expansion or improvement of an existing house. Over its five years of execution the program benefited 3,725 households: 1,208 for new housing and 2,517 for housing improvement. Furthermore, the program supported the establishment of the LISP Foundation and the formation of a Program Implementation Unit (PIU).

The Second Low Income Shelter Program (LISP II) is designed to build upon the success and achievements of the LISP I and to continue supporting the Government of Suriname in its efforts to improve living conditions of low income households. LISP II focuses its efforts on targeting households with monthly net income level of between SRD 852 and SRD 1,988. Through the provision of an upfront demand subsidy the Program address: (i) the significant qualitative housing deficit of affecting LISP II households; and (ii) the lack of affordable housing. LISP II has incorporated lessons from LISP I to improve the outreach, allocation, execution and supervisory processes of the subsidy, and to establish new institutional arrangements.

1.2 Objective and Goal

The Program Objective is to support the Government of Suriname in its efforts to improve living conditions of low income households in Suriname.

The Program Goal is to facilitate access to adequate housing solution through mobilization of savings and/or leveraging of finance from financial institutions.

1.3 Target Beneficiaries and Modalities

The targets beneficiaries of the Program are LISP II households with own land or have the right to use land.

SECOND LOW INCOME SHELTER PROGRAM PARAMARIBO

Low income households are defined as those with the following maximum net monthly income:

- When the Household has 1 to 2 members, the declared per capita income of the Applicant Household should be equal or less than SRD 852 (USD 262) per month.
- When the Household has equal or more than 3 members the declared per capita income of the Applicant Household should be equal or less than SRD 284 (USD 87) per month multiplied by the number of Household members).
- The maximum of household members to be considered in the count would be 7, with a maximum combined income of SRD 1,988 (USD 612).

Beneficiaries receive a Housing Incentive Subsidy of USD 3,000 to be used towards the cost of financing one of the following alternatives:

1. Construction of a new core house
2. Build an extension to an existing house
3. Undertake physical improvements to an existing house

While the beneficiaries in the Hinterland receive a Housing Incentive Subsidy of USD 8,000 to be used towards the cost of financing of the construction of a new core house.

1.4 The Foundation

The implementing agency for Second Low Income Shelter Program is the LISP Foundation, a legally constituted and autonomous entity established with the following aims:

1. Promoting investments in residential areas at low and mid-income groups, particularly new development, renovation or expansion of buildings;
2. Promoting self-building activities;
3. Promoting the participation of Financial Institutions, the building and the construction sector, non-governmental organizations and the government, particularly the Ministry of Social Affairs and Public Housing in the rehabilitation and building of houses in areas at low and mid-income groups;
4. Promoting policy reforms so that land for building purposes, funding and living areas become available more efficiently;
5. Promoting policy reforms as regards the selling and renting out of houses as well as promoting policy reforms in the entire house-building sector;
6. Helping to promote the quality of life and/or the social climate within the respective neighborhoods;

SECOND LOW INCOME SHELTER PROGRAM PARAMARIBO

7. The Foundation attempts to reach its goals by, among other things:

- a) Cooperating with Non-Governmental Organizations, the construction sector, the financial sector and others;
- b) Identifying possibilities to make house-building less expensive and easier and to make available this information to interested parties;
- c) Providing training and information to NGO's and LISP Personnel;
- d) Identifying and, where possible, creating policy reforms to make possible the house-building less expensive, easier and faster and to support the realization of said reforms;
- e) Financially supporting housing solutions of low and mid-income households;
- f) Using any other legal means conducive to the goals set.

1.5 The Supervisory Board of LISP Foundation

The LISP Board is the body responsible for the management of the LISP Foundation. In performing this task the Board shall aim at the interest of the Foundation and the activities the Foundation engages in. The Board evaluates periodically the state of affairs of the Foundation against the background of its instructions concerning the general lines and objectives of the financial, economic, and social and personnel policy.

The Board should consist of seven persons, with the following agencies being represented in the numbers indicated:

- a) Three representatives to be appointed on the recommendation of the Government of Suriname;
- b) One representative to be appointed on the recommendation of the participating financial institutions;
- c) Two representatives to be appointed in the recommendation of the non-governmental organizations involved in shelter activities;
- d) One representative who is acceptable to all aforementioned agencies.

To implement the LISP Program, the Government of Suriname, represented by its Ministry of Social Affairs and Public Housing, had established Low-Income Shelter Program to operate in the form of a Foundation. The LISP Foundation was the coordinating body for the execution of the LISP Program and has all the responsibilities for all aspects of the project execution.

The Foundation Low-Income Shelter Program was established on November 11, 2003, while some changes were made to the articles of association on June 13, 2003. Registration with the Ministry of Justice followed on July 23 under registration number 7949. The Board of Directors is the highest authority in the Foundation.

SECOND LOW INCOME SHELTER PROGRAM PARAMARIBO

Supervisory Board

The supervisory board consist of the following members:

Mr. Ir. L.W. Boksteen	- Chairman
Mrs. M. Caprino	- Secretary
Mr. J. Lecton	- Treasurer
Mr. A. Vrede	- Member
Mrs. U. H. Perri-Oliviera	- Member
Mr. A. Dore	- Member
Mrs. S. Bron	- Member

1.6 The Program Implementation Unit (PIU)

1.6.1 Composition of the PIU

The PIU is the entity responsible for the day-to-day management and implementation of LISP II. The PIU senior officers include a Managing Director, a Housing Program Manager (former Technical Manager) and a Financial Manager. The LISP Board appointed these senior officers and enters into a written employment agreement with them. The Managing Director is accountable to the LISP board and the Housing Program Manager and Financial Manager is accountable to the Managing Director. In addition to the senior executive officers, the PIU includes a Financial Administrator, 2 Housing Program Supervisors, 4 Housing Program Officers, an Office Manager, Office Assistant and Facility Assistant.

1.6.2 Responsibilities of the PIU

The Responsibilities of the PIU include:

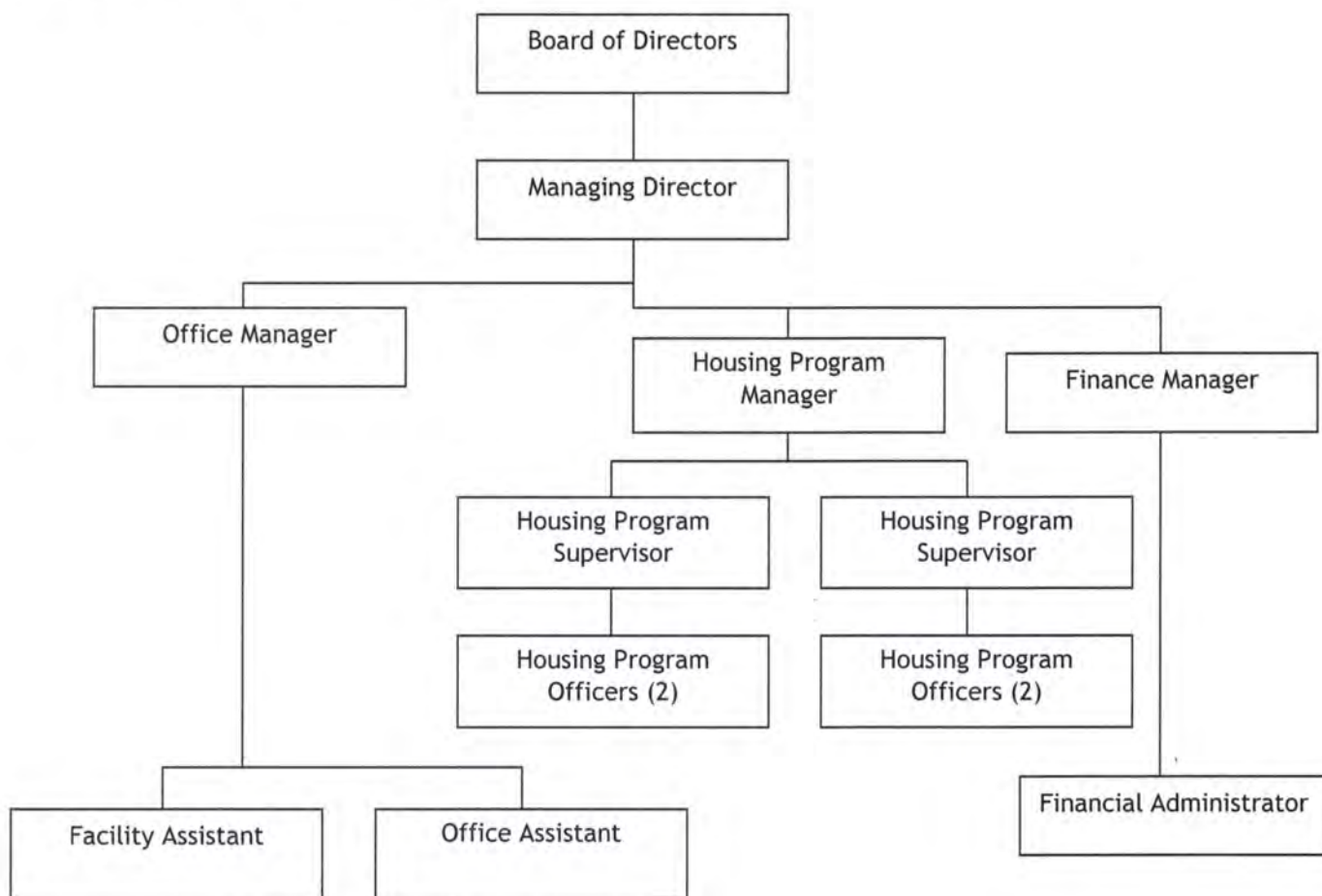
- a) Management of the day-to-day activities of the PIU;
- b) Financial Administration and semi-annual reporting on the revolving fund and the annual financial statement of LISP II resources;
- c) Preparation of semester progress reports;
- d) Prepare a Project Implementation Plan covering the entire implementation period of LISP;
- e) Prepare Annual Plans of Operations;
- f) Manage the procurement cycle (from procurement plan to final payment for goods or services);
- g) Make recommendations to the LISP Board regarding annual targets and the allocation of Housing Incentive Certificates between income groups;
- h) Manage the LISP II project cycle throughout its various stages;
- i) Promote the goals, objectives and procedures of the Program;

**SECOND LOW INCOME SHELTER PROGRAM
PARAMARIBO**

- j) Provide training to service providers (NGOs, Financial Institutions) in the procedures, regulations and rules described in this Operations Manual;
- k) Verify the social, technical, and financial eligibility of applications for Housing Incentive Subsidies (HIC);
- l) Approval of applications for subsidies that satisfy all eligibility criteria and rejection of applications that do not satisfy LISP II criteria;
- m) Monitoring the implementation of LISP housing projects and provide technical advice to beneficiary households and building contractors to ensure that LISP projects are completed on time and on cost;
- n) Monitor and provide technical assistance to the implementing entities of LISP Pilot Projects;
- o) Supervise extensions and improvement projects and approve disbursements for those projects;
- p) Prepare project completion reports;
- q) Ensure that LISP II is implemented according to the rules and guidelines contained in the Operations Manual;
- r) Maintain a Management Information System for managing the LISP project cycle;
- s) Present the Plan of Implementation, the Annual Plans of Operation and the Quarterly Progress Reports to the Board.

SECOND LOW INCOME SHELTER PROGRAM PARAMARIBO

1.6.3 Organization structure of the PIU- LISP



1.7 Program preparation and prior to first disbursement LISP II

The Government of Suriname signed the loan agreement no. 2259/OC-SU for the execution of the Low-Income Shelter Program II (LISP II) with the Inter-American Development Bank on March 26, 2010. Before the effective date of this agreement several expenditures have incurred in the preparation of the Program starting from August 31, 2009 and resources of the Foundation and the Low Middle Income Shelter Program were advanced to replace depleted IT infrastructure and consultancy services for advices on the design of the management information System of the Low Income Shelter Program II. The special conditions prior to first disbursement are subjected to several requirements; therefore the special conditions for the first disbursement were fulfilled after 8.5 months from the effective date of the Loan agreement. After March 26, 2010 and before the first disbursement date, December 15th 2010, several activities have been conducted to fulfill all prior conditions.

SECOND LOW INCOME SHELTER PROGRAM PARAMARIBO

1.8 Program execution changes

The following program parameters have been adjusted after the increase of the official buying exchange rate in January 2011 from SRD 2.71 to SRD 3.25 for one USD applied by the Central Bank of Suriname and on November 19th, 2015 from SRD 3.25 to SRD 3.96 for one USD (due to devaluation).

1. Net Monthly household Income:

- When the Household has 1 or 2 members, the declared per capita income of the Applicant Household should be equal or less than SRD 852 (USD 262) per month.
- When the Household has equal or more than 3 members the declared per capita income of the Applicant Household should be equal or less than SRD 284 (USD 87) per month multiplied by the number of Household members).
- The maximum of household members to be considered in the count would be 7, with a maximum combined income of SRD 1,988 (USD 612).

2. New Core Housing solution

The maximum building cost for new core housing has been increased from USD 10,000 to USD 15,000.

The LISP II program is incorporated in the Nationwide Hanna's Lust Housing program ("Landelijke Woningbouw Programma Hanna's Lust") of the Government to realize more new core Houses than Home Improvements as initially planned and stipulated in the Loan agreement with the IDB and the Government of Suriname.

SECOND LOW INCOME SHELTER PROGRAM PARAMARIBO

1.9 Important Developments during the year 2015

- a. In January 2015 the LISP PIU had a general meeting with the NGOs/CBOs with regard to their questions in relation to the Program closing announcement. As result of this announcement the Minister of Social Affairs and Public Housing had a press conference on 28 January 2015 and thereafter scheduled celebration visits to two pilot villages and a closing meeting with the NGOs/CBOs;
- b. Between January-April 2015 the firm BDO Assurance N.V. conducted their yearly audit of the financial statement FY 2014;
- c. The mid-term evaluation of the program was conducted and completed in the first week of February 2015 by a newly hired consultant, Mrs. Sabajo-Cederboom;
- d. In February 2015 no- objection is granted by the IDB to increase the Revolving Fund to USD 500,000.00 because of projects targets;
- e. One IDB supervisory mission was conducted between Feb 20, 2015 and March 3, 2015;
- f. With regard to the pilot component to explore alternative options for housing solutions for low income an evaluation took place whether to continue this component and it was decided not to pursue as intended;
- g. The loan agreement, signed on March 26, 2010 for the duration of 5 years, expired on March 26, 2015, reason why the minister of Social Affairs and Public Housing (SoZaVo) requested her colleague of Finance an extension for 9 months which was granted by the IDB to not later than December 31, 2015;
- h. In June the PEU granted several beneficiaries in the Hinterland (47) more than the USD 3,000 assigned in order to successfully completed the program because cost of the renovation of the houses exceeded the USD 3,000 due to transportation, worse condition of the houses than was initially realized and extensive work that needs to be done;
- i. August 11, 2015 a budget transfer of USD 400,000 was executed from component 2 to component 1, meaning that component 2 of LISP II was fully cancelled;
- j. November 19th, 2015 the official buying exchange rate of the Central Bank of Suriname (CBvS) has been increased from SRD 3.25 to SRD 3.96 for USD 1;
- k. Two final budget transfers of respectively USD 24,968.66 and USD 143,305.94 were necessary in October and December 2015 to be able to justify the last part of the revolving fund;
- l. At the end of 2015 the fifteen million American Dollar (USD 15,000,000) loan of the IDB is totally disbursed and justified, taken into account some payments in transfers.

SECOND LOW INCOME SHELTER PROGRAM PARAMARIBO

Note 2. SIGNIFICANT ACCOUNTING POLICIES

2.1 Basis of presentation

The financial statements have been prepared using the cash basis of accounting, recognizing revenue when the cash is received and recognizing expenses when the cash has been disbursed. This accounting policy differs from the IPSAS under which transactions should be recorded when they occur and not when they are paid. However, the IPSAS have been applied to circumstances such as those discussed in chapter *"Cash Basis IPSAS: Financial Reporting under the Cash Basis of Accounting"*.

2.2 Currency

The program's accounting records are maintained in U.S. Dollars (USD) and are presented in U.S. Dollars (USD). In order to calculate the equivalent in U.S. dollars, the cash received in local currency at the Central Bank of Suriname, if applicable, is converted to USD at the rate of exchange in effect at the time of receipt of these funds or at the rate of exchange at a time close to the transaction date, such as, the effective rate on the last day of the preceding month or the monthly average. The presentation is in U.S. Dollars rounded-off to the nearest whole U.S. Dollar value.

Cash and Bank Balances are expressed in USD at exchange rates prevailing at December 31, 2015 (USD 1 = SRD 3.96 (after devaluation of SRD in November, 19th, 2015)).

The exchange gains or losses that results from a difference of the exchange rate when the funds are received versus when they are converted to local currency to make payments for eligible expenses is accounted for as an exchange rate differential charged to local counterpart resources.

SECOND LOW INCOME SHELTER PROGRAM PARAMARIBO

Note 3. AVAILABLE CASH BALANCE

The available cash balance as of December 31, 2015, is deposit in the Program's bank account, and includes earned interest income and exchange rate earnings.

Bank	Account	Currency	2015			2014		
			IDB in USD	Local in USD	Total in USD	IDB in USD	Local in USD	Total in USD
Central Bank of Suriname	0313100/001-130-968	SRD	-	-	-	-	259,794	259,794
RBC Bank	19.710.946	SRD	-	254,146	254,146	-	256,760	256,760
Central Bank of Suriname	0313100/001-051-840	USD	-	-	-	137,500	-	137,500
DSB Bank	70.96.003	USD	531	-	531	515	-	515
SPSS Bank	312.082.540	SRD	9,322	-	9,322	11,384	-	11,384
GODO	52.39.10	SRD	18,249	-	18,249	443	-	443
Finatrust N.V.	12.17.652	SRD	14,559	-	14,559	15,055	-	15,055
Kredietcoöperatie de Schakel	10.53.608	SRD	15,430	-	15,430	27,527	-	27,527
DSB Bank	70.95.945	SRD	<u>233,986</u>	-	<u>233,986</u>	<u>241,195</u>	-	<u>241,195</u>
Total cash at bank in 2015			292,077	254,146	546,223	433,619	516,554	950,173
Petty cash local		SRD	-	715	715	-	931	931
Petty cash local field inspections		SRD	-	-	-	-	310	310
Petty cash IDB-Funds			<u>717</u>	-	<u>717</u>	<u>479</u>	-	<u>479</u>
Total cash in USD			<u>292,795</u>	<u>254,861</u>	<u>547,655</u>	<u>434,098</u>	<u>517,795</u>	<u>951,893</u>

The cumulative available earned interest income amounts to USD 12,631. Bank charges and exchange rate loss of respectively USD 3,605 and USD 173,557 were realized.

	Accrued at end December 31, 2014		Movement during 2015		Accrued at end December 31, 2015		
	IDB	LOCAL	IDB	LOCAL	IDB	LOCAL	Total
Bank interest	1,896	6,076	3,044	1,615	4,940	7,691	12,631
Bank charges	2,915	268	324	98	3,239	366	3,605
Exchange rate gain/loss	2,151	-28,873	-54,122	-92,713	-51,971	-121,586	-173,557

Exchange rate loss:

On April 23, 2010, the Government of Suriname deposited SRD 879,200. However, in January 2011 the official buying exchange rate was increased by the Central Bank of Suriname from 2.71 to 3.25, which resulted in a devaluation. In 2014 the buying exchange rate was also 3.25. By the end of December 2015 it was 3.96 due to devaluation announced on November 19th, 2015 by the CBvS.

SECOND LOW INCOME SHELTER PROGRAM PARAMARIBO

Note 4. ADVANCES PENDING JUSTIFICATION

At December 31, 2015, there was no pending justification to the IDB fund.

Note 5. REVOLVING FUND

In accordance with loan contract No. 2259/OC-SU a revolving fund was established at an amount of USD 300,000 and deposited in December 2010 and thereafter increased to USD 436,761 as at December 31, 2012. In 2013, the Revolving Fund deducted with USD 56,761 makes the revolving fund USD 380,000.

This deduction of the revolving fund is processed by the IDB in two steps, namely a) justification of the revolving fund in the amount of USD 246,313.07 and b) revolving fund disbursement in the amount of USD 189,552.48 as disbursement request # 34 and disbursement request # 35 respectively (see letter of the IDB with reference number CCB/CSU/397/2013). In 2014 the revolving Fund decrease again with USD 1,500 makes it USD 378,500, due to ineligible payments. In February 2015 a no-objection is granted by the IDB to increase the Revolving Fund to USD 500,000.00 because of projects targets.

Note 6. LOCAL COUNTERPART FUNDS

The Government of Suriname has committed to contribute the sum of USD 314,000 and deposited the equivalent of SRD 879,200 on April 23, 2010. In January 2012 the Government of Suriname made an additional deposit of SRD 1,000,000 converted into USD at the rate of 3.25. In 2013 another USD 288,340 was deposited and in 2014 USD 259,793.59. In 2015 no additional local counterpart funds were received.

The total contribution of the Government of Suriname amounts to USD 1,169,825.93 almost 4 times more than initially was committed.

Note 7. PRIOR PERIOD ADJUSTMENTS

Undersigned took place by no-objection request (Ref. Nr. LSP015-693/PI) to the IDB on August 11th, 2015 and were expenses done in 2014.

From Component 2	Amount in USD	From Component 1	Amount in USD
2.2 Disbursement # 44; Team Alfa	5,499.99	1.3 Disbursement # 44; Team Alfa	5,499.99
2.2 Disbursement # 47; Team Alfa	6,499.99	1.3 Disbursement # 47; Team Alfa	6,499.99
2.2 Disbursement # 56; Stichting FOB	<u>10,209.22</u>	1.3 Disbursement # 56; Stichting FOB	<u>10,209.22</u>
Total	<u>22,209.20</u>		<u>22,209.20</u>

SECOND LOW INCOME SHELTER PROGRAM PARAMARIBO

Note 8. PROCUREMENT OF GOODS AND SERVICES

In 2015 procurement of goods and services consist more consultants (supervisors) and small works contracts to be able to build the New Core Houses in the Hinterland.

#	Contract	Description services	Signature date	Original amount in USD	Prism Number	Amount approved in USD	Time frame
1	Mr. O. Ankossie	Supervisor Hinterland	Jan. 19, 2015	3,076.92	SUA 1520	3,076.92	Jan. 19, 2015-May 19, 2015
2	Mrs. S. Burnett	Supervisor Hinterland	Jan. 19, 2015	3,076.92	SUA 1522	3,076.92	Jan 19, 2015-May 19, 2015
3	Mr. U. Sno	Supervisor Hinterland	Jan. 19, 2015	3,076.92	SUA 1523	3,076.92	Jan 19, 2015-May 19, 2015
4	Mr. S. Srisria	Supervisor Hinterland	Jan. 19, 2015	3,076.92	SUA 1524	3,076.92	Jan 19, 2015-May 19, 2015
5	Mr. R. Amiembra	Supervisor Hinterland	Feb. 18, 2015	3,076.92		3,076.92	Feb. 18, 2015-June 30, 2015
6	Mr. D.Asonoe	Supervisor Hinterland	Feb. 18, 2015	3,076.92		3,076.92	Feb. 18, 2015-June 30, 2015
7	Mr. M.Betian	Supervisor Hinterland	Feb. 1, 2015	3,076.92		3,076.92	Feb. 18, 2015-June 30, 2015
8	Mr. H. Ajambia	Supervisor Hinterland	Feb. 24, 2015	3,076.92		3,076.92	Feb. 24, 2015-June 30, 2015
9	Mr. J.S. Misiedjan	Supervisor Hinterland	Feb. 24, 2015	3,076.92		3,076.92	Feb. 24, 2015-June 30, 2015
10	Mr. C. Finkie	Supervisor Hinterland	Feb. 21, 2015	3,076.92		3,076.92	March 21, 2015-July 3, 2015
11	Mr. L. King	Supervisor Hinterland	May 8, 2015	2,461.54		2,461.54	May 8, 2015-July 8, 2015
12	Mrs. M.Duttenhofer	Socio-Economic Study	Feb. 1, 2015	7,384.62	SUA 1525	7,384.62	Feb. 1, 2015-March 15, 2015
13	Mr. S. Eduards	Contractor	Feb. 2, 2015	2,153.85		2,153.85	Feb. 2, 2015-March 16, 2015
14	Mr. R. Dhani	Contractor	Feb 9, 2015	2,153.85		2,153.85	Feb. 9, 2015-March 23, 2015
15	Mr. E. Karwofodi	Contractor	Feb. 17, 2015	2,153.85		2,153.85	Feb. 17, 2015-March 31, 2015
16	Mr. E. Karwofodi	Contractor	Feb. 21, 2015	2,153.85		2,153.85	Feb. 17, 2015-March 31, 2015
17	Mr. R. Ramkisoensingh	Contractor	Feb. 21, 2015	1,538.46		1,538.46	Feb. 21, 2015-April 4, 2015
18	Mr. R. Ramkisoensingh	Contractor	Feb. 21, 2015	1,538.46		1,538.46	Feb. 21, 2015-April 4, 2015
19	Mr. R. Ramkisoensingh	Contractor	Feb. 21, 2015	1,538.46		1,538.46	Feb. 21, 2015-April 4, 2015
20	Mr. R. Ramkisoensingh	Contractor	Feb. 21, 2015	1,538.46		1,538.46	Feb. 21, 2015-April 4, 2015
21	Mr. J. Learmond	Contractor	Feb. 21, 2015	1,538.46		1,538.46	Feb. 21, 2015-April 4, 2015
22	Mr. K.Amadilla	Contractor	Feb. 24, 2015	2,153.85		2,153.85	Feb. 24, 2015-April 7, 2015
23	Mr. K.Amadilla	Contractor	Feb. 24, 2015	2,153.85		2,153.85	Feb. 24, 2015-April 7, 2015
24	Mr. F. Wanabo	Contractor	Feb. 24, 2015	2,153.85		2,153.85	Feb. 24, 2015-April 7, 2015
25	Mr. K.Amadilla	Contractor	Feb. 24, 2015	2,153.85		2,153.85	Feb. 24, 2015-April 7, 2015
26	Mr. F. Wanabo	Contractor	Feb. 24, 2015	2,153.85		2,153.85	Feb. 24, 2015-April 7, 2015
27	Mr. S. Misidjan	Contractor	Feb. 24, 2015	2,153.85		2,153.85	Feb. 24, 2015-April 7, 2015
28	Mr. K.Amadilla	Contractor	Feb. 24, 2015	2,153.85		2,153.85	Feb. 24, 2015-April 7, 2015
29	Mr. D.Bonte	Contractor	Feb. 24, 2015	2,153.85		2,153.85	Feb. 24, 2015-April 7, 2015
30	Mr. M. Siwo	Contractor	Feb. 24, 2015	2,153.85		2,153.85	Feb. 24, 2015-April 7, 2015
31	Mr. M. Siwo	Contractor	Feb. 24, 2015	2,153.85		2,153.85	Feb. 24, 2015-April 7, 2015
32	Mr. B. Landveld	Contractor	Feb. 25, 2015	2,153.85		2,153.85	Feb. 25, 2015-April 8, 2015
33	Mr. B. Landveld	Contractor	Feb. 26, 2015	2,153.85		2,153.85	Feb. 26, 2015-April 9, 2015

SECOND LOW INCOME SHELTER PROGRAM PARAMARIBO

#	Contract	Description services	Signature date	Original amount in USD	Prism Number	Amount approved In USD	Time frame
34	Mr. A. Fandja	Contractor	Feb. 8, 2015	2,307.69		2,307.69	Feb. 8, 2015-March 22, 2015
35	Mr. A. Fandja	Contractor	Feb. 8, 2015	2,307.69		2,307.69	Feb. 8, 2015-March 22, 2015
36	Mr. A. Fandja	Contractor	Feb. 8, 2015	2,307.69		2,307.69	Feb. 8, 2015-March 22, 2015
37	Mr. A. Fandja	Contractor	Feb. 8, 2015	2,307.69		2,307.69	Feb. 8, 2015-March 22, 2015
38	Mr. A. Fandja	Contractor	Feb. 8, 2015	2,307.69		2,307.69	Feb. 8, 2015-March 22, 2015
39	Mr. A. Fandja	Contractor	Feb. 8, 2015	2,307.69		2,307.69	Feb. 8, 2015-March 22, 2015
40	Mr. A. Fandja	Contractor	Feb. 8, 2015	2,307.69		2,307.69	Feb. 8, 2015-March 22, 2015
41	Mr. A. Fandja	Contractor	Feb. 8, 2015	2,307.69		2,307.69	Feb. 8, 2015-March 22, 2015
42	Mr. R. Dhani	Contractor	Feb. 9, 2015	2,153.85		2,153.85	Feb. 9, 2015-March 23, 2015
43	Mr. R. Dhani	Contractor	Feb. 9, 2015	2,153.85		2,153.85	Feb. 9, 2015-March 23, 2015
44	Mr. R. Dhani	Contractor	Feb. 9, 2015	2,153.85		2,153.85	Feb. 9, 2015-March 23, 2015
45	Mr. W. Foto	Contractor	March 19, 2015	2,153.85		2,153.85	March 19, 2015-April 30, 2015
46	Mr. P. Resi	Contractor	March 19, 2015	2,153.85		2,153.85	March 19, 2015-May 3, 2015
47	Mr. S. Eduards	Contractor	March 2, 2015	2,153.85		2,153.85	March 2, 2015-April 16, 2015
48	Mr. S. Eduards	Contractor	March 2, 2015	2,153.85		2,153.85	March 2, 2015-April 16, 2015
49	Mr. J. Edmund	Contractor	March 30, 2015	1,538.46		1,538.46	March 30, 2015-June 13, 2015
50	Mr. S. Eduards	Contractor	March 4, 2015	2,153.85		2,153.85	March 4, 2015-April 18, 2015
51	Mr. N. Ajambia	Contractor	April 11, 2015	2,307.69		2,307.69	Feb. 21, 2015-April 4, 2015
52	Mr. N. Ajambia	Contractor	April 11, 2015	2,307.69		2,307.69	April 11, 2015-May 25, 2015
53	Mr. C.R. Burnett	Contractor	April 11, 2015	2,307.69		2,307.69	April 11, 2015-May 25, 2015
54	Mr. C.R. Burnett	Contractor	April 11, 2015	2,307.69		2,307.69	April 11, 2015-May 25, 2015
55	Mr. C.R. Burnett	Contractor	April 11, 2015	2,307.69		2,307.69	April 11, 2015-May 25, 2015
56	Mr. E. Misidjan	Contractor	April 11, 2015	2,307.69		2,307.69	April 11, 2015-May 25, 2015
57	Mr. N.Ajambia	Contractor	April 11, 2015	2,307.69		2,307.69	April 11, 2015-May 25, 2015
58	Mr. N.Ajambia	Contractor	April 11, 2015	2,307.69		2,307.69	April 11, 2015-May 25, 2015
59	Mr. E. Misidjan	Contractor	April 11, 2015	2,307.69		2,307.69	April 11, 2015-May 25, 2015
60	Mr. E. Misidjan	Contractor	April 11, 2015	2,307.69		2,307.69	April 11, 2015-May 25, 2015
61	Mr. R. Eduards	Contractor	April 13, 2015	2,153.85		2,153.85	April 13, 2015-June 27, 2015
62	Mr. W.S. Sarius	Contractor	April 14, 2015	1,538.46		1,538.46	April 14, 2015-May 28, 2015
63	Mr. W. Foto	Contractor	April 14, 2015	2,153.85		2,153.85	April 14, 2015-May 28, 2015
64	Mr. R. Dhani	Contractor	April 20, 2015	2,153.85		2,153.85	April 20, 2015-May 5, 2015
65	Mr. R. Dhani	Contractor	April 20, 2015	2,153.85		2,153.85	April 20, 2015-May 5, 2015
66	Mr. R. Dhani	Contractor	April 20, 2015	2,153.85		2,153.85	April 20, 2015-May 5, 2015
67	Mr. M. Sabajo	Contractor	April 20, 2015	1,538.46		1,538.46	April 24, 2015-June 7, 2015
68	Mr. M. Sabajo	Contractor	April 27, 2015	1,538.46		1,538.46	April 27, 2015-June 23, 2015
69	Mr. R. Lucas	Contractor	April 27, 2015	1,538.46		1,538.46	April 27, 2015-June 23, 2015
70	Mr. R. Lucas	Contractor	April 27, 2015	1,538.46		1,538.46	April 27, 2015-June 23, 2015
71	Mr. B. Landveld	Contractor	April 3, 2015	2,153.85		2,153.85	April 3, 2015-May 17, 2015
72	Mr. J. Edmund	Contractor	April 7, 2015	1,538.46		1,538.46	April 7, 2015-May 21, 2015
73	Mr. J. Edmund	Contractor	April 7, 2015	1,538.46		1,538.46	April 7, 2015-May 21, 2015

SECOND LOW INCOME SHELTER PROGRAM PARAMARIBO

#	Contract	Description services	Signature date	Original amount in USD	Prism Number	Amount approved In USD	Time frame
74	Mr. S.K. Tooy	Contractor		2,461.54		2,461.54	May 18, 2015-June 2, 2015
75	Mr. c. Ajerie	Contractor		2,461.54		2,461.54	May 18, 2015-June 2, 2015
76	Mr. c. Ajerie	Contractor		2,461.54		2,461.54	May 18, 2015-June 2, 2015
77	Mr. S.K. Tooy	Contractor		2,461.54		2,461.54	May 18, 2015-June 2, 2015
78	Mr. c. Ajerie	Contractor		2,461.54		2,461.54	May 18, 2015-June 2, 2015
79	Mr. c. Ajerie	Contractor		2,461.54		2,461.54	May 18, 2015-June 2, 2015
80	Mr. c. Ajerie	Contractor		2,461.54		2,461.54	May 18, 2015-June 2, 2015
81	Mr. S.K. Tooy	Contractor		2,461.54		2,461.54	May 18, 2015-June 2, 2015
82	Mr. S. Eduards	Contractor		2,153.85		2,153.85	May 26, 2015-July 10, 2015
83	Mr. S. Eduards	Contractor		2,153.85		2,153.85	May 26, 2015-July 10, 2015
84	Mr. R. Adjako	Contractor		2,153.85		2,153.85	May 2, 2015-June 16, 2015
85	Mr. S. Eduards	Contractor		2,153.85		2,153.85	May 5, 2015-June 19, 2015
86	Mr. S. Eduards	Contractor		2,153.85		2,153.85	May 30, 2015-Aug. 13, 2015
87	Mr. S. King	Contractor		1,538.46		1,538.46	June 14, 2015-July 28, 2015
88	Mr. J. Alfred	Contractor		1,538.46		1,538.46	June 16, 2015-July 30, 2015
89	Mr. B.F. Kariem	Contractor		1,538.46		1,538.46	June 17, 2015-July 31, 2015
90	Mr. B. Ramadin	Contractor		1,538.46		1,538.46	June 17, 2015-July 31, 2015
91	Mr. R. Aika	Contractor		1,538.46		1,538.46	June 18, 2015-Aug. 1, 2015
92	Mr. R. Lucas	Contractor		1,538.46		1,538.46	May 18, 2015-June 2, 2015
93	Mr. D. Salomon	Contractor		1,538.46		1,538.46	June 19, 2015-Aug. 2, 2015
94	Mr. B. Kariem	Contractor		1,538.46		1,538.46	June 19, 2015-Aug 2, 2015
95	Mr. D. Salomon	Contractor		1,538.46		1,538.46	June 24, 2015-Aug 7, 2015
96	Mr. S. Soredjo	Contractor		1,538.46		1,538.46	June 25, 2015-Aug 8, 2015
97	Mr. S. Soredjo	Contractor		1,538.46		1,538.46	June 26, 2015-Aug. 9, 2015
98	Mr. K. Sapa	Contractor		1,538.46		1,538.46	June 28, 2015-Aug 11, 2015
99	Mr. S. Eduards	Contractor		2,153.85		2,153.85	June 30, 2015-Aug 9, 2015
100	Mr. R. Aika	Contractor		1,538.46		1,538.46	July 22, 2015-Sept. 5, 2015
101	Mr. B. Mac-Intoch	Contractor		1,538.46		1,538.46	Sept. 4, 2015-Aug. 18, 2015
102	Mr. H. Herman	Contractor		1,538.46		1,538.46	Sept. 7, 2015-Aug. 21, 2015
103	Mr. F. Ayala	Update MIS	Feb. 10, 2015	1,575.00	SUA 1521	1,575.00	March 15, 2015-Dec. 15, 2015
104	Mr. M. Ishaak	Building rent	April 1, 2015	48,000.00		48,000.00	Oct. 15, 2015-Oct. 15, 2017
105	Mrs. M. Duttchenhofer	Socio-Economic Study	May 1, 2015	1,846.15	SUA 1525	1,846.15	May 1, 2015-June 15, 2015
106	Mr. R. Ramautarsing	Designing Project (loan) Proposal	July 10, 2015	23,500.00		23,500.00	July 10, 2015-Sept. 30, 2015
107	Mr. F. Ayala	Webhosting	Dec. 7, 2015	2,160.00		2,160.00	Dec. 15, 2015-Dec. 15, 2017
	Total			299,542.13		299,542.00	

SECOND LOW INCOME SHELTER PROGRAM PARAMARIBO

Note 9. INVESTMENT CATEGORIES

9.1 Component 1: Consolidation of the Subsidy Model for Affordable Housing Solutions

This component:

- Assist low income households that own land or have the right to land use to access or improve a housing solution by providing them an upfront subsidy of USD 3,000.
It is a one-time, upfront subsidy that will be provided on a non-reimbursable basis. The value of the Housing Incentive Certificate will be the same for all types of projects (new core houses; extension; improvement; or combined projects involving both extension and improvement). This means that the smallest sized project that will be eligible for LISP II is a project that costs USD 3,000 plus the minimum household contribution;
- Extend geographic coverage of the subsidy to the Interior of the country with an upfront subsidy of USD 8,000 plus an in-kind contribution by the beneficiaries; and
- Strengthen the operation, training and equipment needs of the PIU and of NGO service providers.

As at December 31, 2015 the cumulative investments of IDB under this component amount to USD 13,088,997.

Breakdown of component 1 investment is as follows:

COI	Investment category	Accrued at end December 31, 2014			Movement during 2015			Accrued at end December 31, 2015		
		IDB	LOCAL	TOTAL	IDB	LOCAL	TOTAL	IDB	LOCAL	TOTAL
1.	Consolidation of the subsidy Model									
1.1	Subsidies to Coastal and Urban areas:	8,178,146	-	8,178,146	3,443,854	12,438	3,456,292	11,622,000	12,438	11,634,438
1.2	Subsidies to the Interior	67,675	-	67,675	862,966	42,293	905,259	930,641	42,293	972,934
1.3	Institutional Strengthening of Program Partners	337,330	93,566	430,896	199,027	36,338	235,364	536,357	129,904	666,260
	Total	8,583,151	93,566	8,676,717	4,505,846	91,070	4,596,916	13,088,997	184,636	13,273,633

At December 31, 2015 the PIU granted 1,274 applicants with subsidies in coastal and urban area for the following solutions:

Home Renovations: 1,013 (2014: 956)

Home Expansion : 67 (2014: 33)

New Homes : 194 (2014: 33)

Completed projects as at December 31, 2015: 1,805

Subsidies to Coastal and Urban areas are fixed USD 3,000, equivalent to SRD 9,750, while the subsidies to the Interior are USD 8,000, equivalent to 26,000. After devaluation of the SRD on November 19th, 2015 some payments still had to be made to applicants in the coastal and urban area. Management of LISP decided to pay the subsidy of SRD 9,750 to the applicants.

SECOND LOW INCOME SHELTER PROGRAM PARAMARIBO

Subsidies to the Interior are provided by LISP PIU by purchasing the building materials, paying to transport these materials to the different villages and paid the labor costs so that the new homes can be build. Beneficiaries also give their in-kind contribution which was agreed on fore hand.

Institutional Strengthening of program partners consist more of NGO and IFI's services relate to fees paid to the Non-Governmental Organizations. The Financial Institutions are paid for their services out of the local budget. The fee paid to the NGO's for one approved application is USD 110.77 for region 3, 4 and 5 exclusive of the districts Saramacca and Marowijne. The latter are awarded with an extra fee of USD 83.27 for each approved application.

Breakdown of subcomponent 1.3

	As at December 31, 2014		Movement during 2015		As at December 31, 2015	
	IDB	Local	IDB	Local	IDB	Local
Training to NGO's/CBO's	9,450	60	-	-	9,450	60
NGO's						
Women Business Group	73,057	-	14,673	-	87,730	-
Women Business Group Pilot Interior	5,339	1,538	-	-	5,339	1,538
Marsidi	30,905	-	16,556	-	47,461	-
Stichting Habitat	1,873	-	-	-	1,873	-
Stichting Lust en Rust	41,229	11,492	17,053	2,840	58,282	14,332
Sari	81,181	6,910	4,472	83	85,653	6,993
NVB	47,056	-	11,441	-	58,497	-
Randstad 'Bouw en Constructie'	997	-	1,889	-	2,886	-
Stichting Cedrewana Krioro	3,877	-	7,302	-	11,179	-
Stichting Henaturant	111	-	86	-	197	-
Stichting Jongeren van Flora en Omgeving	1,292	-	862	-	2,154	-
Stichting Luku Dosu	8,357	-	689	-	9,046	-
Stichting Vonzell	1,206	-	11,944	-	13,150	-
Stichting Evangelisatie Gemeente						
Handelingen	172	-	-	-	172	-
Stichting Leiding 14	2,326	-	4,738	-	7,064	-
Uma Nanga Neng	-	-	2,548	-	2,548	-
Stichting Avittimauw	-	-	71	-	71	-
IFI	-	73,565	-	33,415	-	106,980
Supervision cost	<u>28,902</u>	-	<u>104,703</u>	-	<u>133,605</u>	-
Total payment	<u>337,330</u>	<u>93,565</u>	<u>199,027</u>	<u>36,338</u>	<u>536,357</u>	<u>129,903</u>

SECOND LOW INCOME SHELTER PROGRAM PARAMARIBO

9.2 Component 2: Pilot Projects for Low Income Housing

The pilot component is to explore options to provide residential land and a housing solution at prices affordable for low income households. This component is not executed and the funds are transferred to component 1.

9.3 Component 3: Institutional Strengthening of the PIU

The aim of this component is to support the operational, managerial and environmental training and equipment needs of the PIU.

COI	Investment category	Accrued at end December 31, 2014			Movement during 2015			Accrued at end December 31, 2015		
		IDB	LOCAL	TOTAL	IDB	LOCAL	TOTAL	IDB	LOCAL	TOTAL
3.0	Strengthening of LISP Foundation and Program Management									
3.1	Staff	1,084,608	173,829	1,258,437	298,750	16,707	315,457	1,383,358	190,536	1,573,894
3.2	Equipment	69,628	36,563	106,191	-	1,965	1,965	69,628	38,528	108,156
3.3	Training	14,682	428	15,110	62,145	-	62,145	76,827	428	77,255
3.4	Program Administration	187,992	287,328	475,320	34,995	77,397	112,392	222,987	364,725	587,712
3.5	Program promotion and Outreach	18,866	31,045	49,911	5,855	1,661	7,517	24,721	32,706	57,427
	Total	1,375,776	529,193	1,904,969	401,745	97,730	499,475	1,777,521	626,923	2,404,444

Assets acquired on behalf of the execution of LISP II are as follows:

	Cumulative acquisition 2014	Acquisition 2015	Total fixed assets
Total Fixed Assets			
3.2.102 Computer/Laptops	35,446	-	35,446
3.2.102 IT Software/MIS	16,335	-	16,335
3.2.103 Servers/Network/Backup	7,592	1,334	8,926
3.2.104 Printers/Scanners/Copymachine	8,296	-	8,296
3.2.105 Telephone/Fax	2,773	-	2,773
3.2.201 Vehicle Pick-Up Inventory	27,600	-	27,600
3.2.3 Office Equipment (Furniture)	5,851	-	5,851
3.2.5 Other Equipment	<u>2,296</u>	<u>631</u>	<u>2,927</u>
Total Fixed Assets	<u>106,189</u>	<u>1,965</u>	<u>108,154</u>

9.4 Evaluation and Auditing

Evaluation and auditing (IDB) amounting to USD 51,359 pertain to the 2014 en 2015 audit and evaluation cost.

**SECOND LOW INCOME SHELTER PROGRAM
PARAMARIBO**

Note 10 DISBURSEMENT MADE

IDB Fund:

Type of transaction requested	Disb.#	Requested in USD	Type of transaction processed	Disb.#	Disbursed in USD	Variances
Replenishment of the Revolving Fund	62	31,668	Replenishment of the Revolving Fund	62	31,668	-
Replenishment of the Revolving Fund	63	182,399	Replenishment of the Revolving Fund	63	182,399	-
Replenishment of the Revolving Fund	64	78,000	Replenishment of the Revolving Fund	64	78,000	-
Revolving Fund Disbursement	65	121,500	Revolving Fund Disbursement	65	121,500	-
Replenishment of the Revolving Fund	66	282,363	Replenishment of the Revolving Fund	66	282,363	-
Replenishment of the Revolving Fund	67	212,747	Replenishment of the Revolving Fund	67	212,747	-
Replenishment of the Revolving Fund	68	204,574	Replenishment of the Revolving Fund	68	202,674	1,900
Replenishment of the Revolving Fund	69	135,000	Replenishment of the Revolving Fund	69	135,000	-
Replenishment of the Revolving Fund	70	249,690	Replenishment of the Revolving Fund	70	249,690	-
Replenishment of the Revolving Fund	71	363,961	Replenishment of the Revolving Fund	71	363,961	-
Replenishment of the Revolving Fund	72	300,821	Replenishment of the Revolving Fund	72	300,821	-
Replenishment of the Revolving Fund	73	220,405	Replenishment of the Revolving Fund	73	220,405	-
Replenishment of the Revolving Fund	74	436,016	Replenishment of the Revolving Fund	74	436,016	-
Replenishment of the Revolving Fund	75	211,206	Replenishment of the Revolving Fund	75	211,206	-
Replenishment of the Revolving Fund	76	300,000	Replenishment of the Revolving Fund	76	300,000	-
Replenishment of the Revolving Fund	77	338,378	Replenishment of the Revolving Fund	77	338,378	-
Replenishment of the Revolving Fund	78	300,000	Replenishment of the Revolving Fund	78	300,000	-
Replenishment of the Revolving Fund	79	316,278	Replenishment of the Revolving Fund	79	316,278	-
Replenishment of the Revolving Fund	80	275,588	Replenishment of the Revolving Fund	80	275,588	-
Revolving Fund Disbursement	81	103,005	Revolving Fund Disbursement	81	103,005	-
		4,663,599			4,661,698	-
		-----			-----	
Justification of the Revolving Fund	82	168,475	Justification of the Revolving Fund		168,475	
Justification of the Revolving Fund	83	491,788	Justification of the Revolving Fund		491,788	
		660,263			660,263	
		-----			-----	
		5,323,862			5,321,962	

Explanation Variance:

- USD 1,900 was deducted from disbursement request # 68 because the request was larger than the Revolving Fund.

**SECOND LOW INCOME SHELTER PROGRAM
PARAMARIBO**

**Note 11. RECONCILIATION BETWEEN THE STATEMENT OF CASH FLOW AND THE STATEMENT OF
CUMULATIVE INVESTMENTS**

Per statement of cash flow	2015			2014		
	IDB	LOCAL	TOTAL	IDB	LOCAL	TOTAL
Cumulative cash received	15,001,501	1,182,457	16,183,958	10,339,803	1,177,798	11,517,601
Less: cash at bank available	<u>292,077</u>	<u>254,146</u>	<u>546,223</u>	<u>433,619</u>	<u>516,554</u>	<u>950,173</u>
Cash used	14,709,424	928,311	15,637,735	9,906,184	661,244	10,567,428
Petty cash balance	<u>717</u>	<u>715</u>	<u>1,432</u>	<u>479</u>	<u>1,241</u>	<u>1,720</u>
	14,708,707	927,596	15,636,303	9,905,705	660,003	10,565,708
Per statement of cumulative investments						
Cumulative investments	<u>14,959,506</u>	<u>816,127</u>	<u>15,775,633</u>	<u>10,000,555</u>	<u>625,514</u>	<u>10,626,069</u>
Reconciliation difference	<u>-250,799</u>	<u>111,469</u>	<u>-139,330</u>	<u>-94,850</u>	<u>34,489</u>	<u>-51,276</u>

The reconciliation difference consists of the following items:

Payment in transfers	-321,323	-	-321,323	-92,077	-	-92,077
Balance in bank account IDB	24,022	-	24,022	-	-	-
Suspense bank account transfer (pending transfer)	6,166	-	6,166	-	-	-
Funds already used and pending For justification	-	-	-	478	-	478
Pending transfer for settlements local to IDB	-	-17,506	-17,506	-26	-	-26
IDB expenses register in 2016, advance disbursed	-11,363	-	-11,363	-	-	-
USD 1,900 deducted for disbursement # 68	1,900	-	1,900	-	-	-
Less disburse although classified as IDB expense	315	-	315	-	-	-
LISP I bank balance transfer to LISP II	-816	-3,134	-3,950	-816	-2,299	-3,115
Bank interest	-4,940	4,940	-	-1,896	1,896	-
Bank charges	3,239	366	3,605	2,915	268	3,183
Exchange rate differences	51,971	121,586	173,557	-2,151	28,873	26,722
Receivable employees medical insurance and wage tax	-	3,731	3,731	-	4,598	4,598
Liability wage tax authorities	-	1,281	1,281	-	273	273
Liability medical insurance	-	109	109	-	177	177
Unexplained	<u>30</u>	<u>95</u>	<u>125</u>	<u>-1,277</u>	<u>703</u>	<u>-574</u>
	<u>-250,799</u>	<u>111,468</u>	<u>-139,331</u>	<u>-94,850</u>	<u>34,489</u>	<u>-60,361</u>

**SECOND LOW INCOME SHELTER PROGRAM
PARAMARIBO**

**Note 12. RECONCILIATION BY INVESTMENT CATEGORIES BETWEEN THE PROJECT'S RECORDS
AND THE IDB'S RECORDS**

CATEGORY	IDB records Disbursed LMS 1	Program records	Difference	Notes
1.0 Consolidation of the subsidy model	-	-	-	
1.1 Subsidies to Coastal and Urban Areas	-	-	-	
1.1.1 New core house	489,000	489,000	-	
1.1.2 House improvement and extension	11,151,000	11,133,000	18,000	1
1.2 Subsidies to the interior	-	-	-	
1.2.1 New core house	952,147	930,641	21,506	2
SUBS. INTERIOR NEW CORE				
1.3 Institutional strengthening of program partner	553,072	536,357	16,715	3
2.0 Pilot development	-	-	-	
2.1 Pilot design and related investment	-	-	-	
2.2 Execution/monitoring	-	-	-	
3.0 Strengthening of LISP Foundation and Program Management	-	-	-	
3.1 Staff	1,372,216	1,383,358	-11,142	4
3.2 Equipment	69,628	69,628	-	
3.3 Training to the PEU	69,013	76,827	-7,814	5
3.4 Program administration	226,289	222,987	3,302	6
3.5 Program promotion and outreach	24,406	24,721	-315	7
5.0 Evaluation and auditing	93,229	92,987	241	8
	15,000,000	14,959,506	40,494	
Revolving fund	-	-	-	
	<u>15,000,000</u>	<u>14,959,506</u>	<u>40,494</u>	

**SECOND LOW INCOME SHELTER PROGRAM
PARAMARIBO**

Notes Explanation of the difference:

1. Subsidy for the applicant Mr. Lejoenakame Charla U & Apapoe Frankie Arfie were disbursed for total USD 6,000 in 2014, however these subsidies were later redeposit. In 2015 Ganpat-Padarath Sharmila and Bernard Esly redeposit their subsidy because of inappropriate requirements. Advance disbursements of 2 subsidy amounts of USD 6,000 due to closing of the Program but not realized.
2. Two payments in total of USD 15,384.60 of contractor R. Sjauw Mook, responsible for implementing the construction in Cabenda dorp and which is an additional GOS Expense, recorded as IDB cost instead of ADD GOS. One of the payments of USD 7,692.30 was disbursed. USD 6,121.40 building material was disbursed in advance due to closing of the project but is not realized.
3. A total amount of USD 6,530.61 of NGO/CBO fee is disbursed in 2015 but actually paid and recorded in 2016. The rest of the difference of USD 10,185 of NGO/CBO fee is also advance disbursed but not realized.
- 4/5. Compared to the IDB records LISP recorded the expenses of Nimos (USD 7,875 in 2013) as costs of staff instead of Training to the PIU. This regards disbursement number 44 in 2013. Too much disbursed USD 172, 31 regarding bonus (2014). USD 1,500 salary deposit from LISP IDB recorded as advance of funds (LMS 10).
6. An amount of USD 2,160 regarding international consultant Ayala which is an eligible expense, disbursed but paid of another fund due to in-availability of USD (the total amount of USD was already converted into SRD); Building rent of USD 1,200 (15 September-15 October, 2015) twice disbursed. See disbursement # 80 & 81.
7. An amount of USD 315 promotion cost is less disbursed in this category although is classified as IDB expense.
8. In conformity with the contract with BDO an amount of USD 2,142 has to be paid. This amount has already been disbursed due to closing of the project, USD 1,900 deducted from disbursement # 68.

SECOND LOW INCOME SHELTER PROGRAM PARAMARIBO

Note 13 SUBSEQUENT EVENTS

- There were payments in transfer of USD 321,323 after December 31, 2015.
- Tangible fixed assets purchased during the program and with an acquisition value of USD 108,154 remains in management of the Foundation LISP. If the Foundation will be executed they will be transferred to the ministry of Social Affairs and Housing.
- Accounts opened at the beginning of LISPII, will be terminated after the end of the audit.
- The amount of USD 30,165 (see table below) will be redeposit to the IDB bank account in Washington.

Redeposit of IDB Funds	<u>Amount in USD</u>
Pending transfer for settlement local to IDB	17,506
IDB expenses register in 2016, advance disbursed	11,363
Balance in bank account IDB	<u>24,022</u>
	<u>30,165</u>

Non objection Additional subsidy and Action coach costs as eligible expenses

On March 11, 2016 a non objection has been granted by the IDB in response to a request of LISP dated March 1, 2016 regarding additional subsidy paid in total amount of USD 140,997 to beneficiaries in Marowijne, Paramaribo and Wanica during the year.

On March 21, 2016 a non objection has been granted by the IDB in response to a request of LISP dated March 15, 2016 regarding expenses of the training of Action Coach as eligible expenses. The non objection regards an amount of USD 6,000.

The above-mentioned non objections after balance sheet date have already been recognized in the financial statements.

Development of the SRD-exchange rate

In March 2016 the Central Bank of Suriname officially brought an end to the fixation of the SRD to the USD by introducing auctions of USD to the market. The official exchange rate is determined several times a week by this auction. As per April 11, 2016 the official exchange midrate is SRD 5.37 for 1 USD.