

PROJECT STATUS REPORT

JANUARY 2013 - JUNE 2013

SECTION 1: PROJECT SUMMARY

PROJECT NAME: PROADAPT: Program for Climate Adaptation in MSMEs

Project Number: RG-M1223 - Operation Number: ATN/ME-13704-RG

Result: Create new capacities, tools, business models and knowledge that enable MSMEs and their supporting ecosystems to reduce vulnerabilities to climate change and to seize related business opportunities

Country Administrator
UNITED STATES

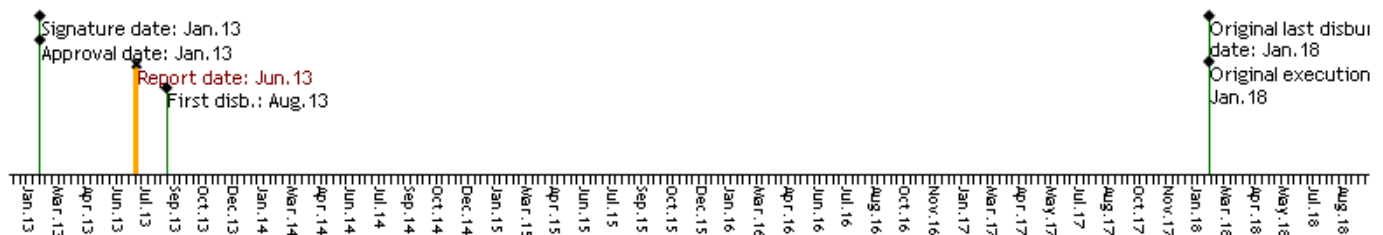
Beneficiary Country
UNITED STATES

Executing Agency: INTER-AMERICAN DEVELOPMENT BANK

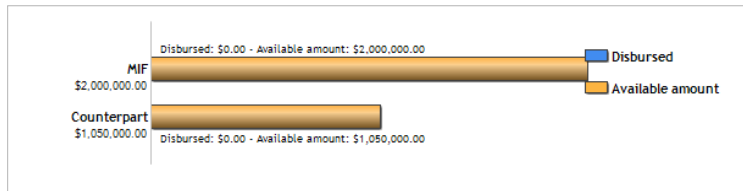
Design Team Leader:

Supervision Team Leader: Sanchez, Carlos

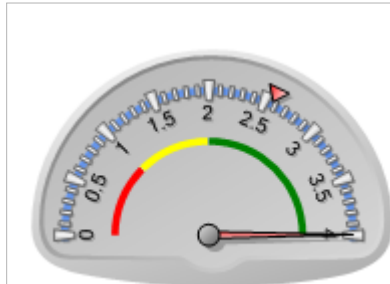
TIMELINE



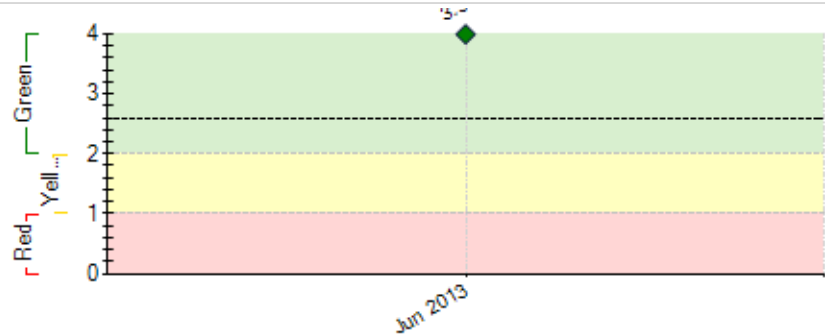
FUNDS



PERFORMANCE SCORE

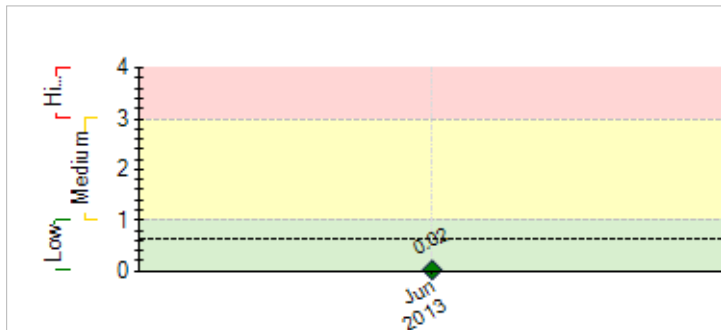


Current score: Satisfactory: 3.995
MIF Average: 2.573



----- MIF performance average

EXTERNAL RISKS



----- MIF risk average: 0.628

INSTITUTIONAL CAPACITY

Risk
Financial Management:
Procurement:
Technical Capacity:

SECTION 2: PERFORMANCE

Summary of project performance in the last six months

During the first semester the following activities were successfully carried out:

1. Hiring of a program coordinator
2. Defining the overall lines of a PROADAPT strategy
3. Pre-identifying of pilot projects, currently under assessment. (Colombia, Brazil, Haiti, Saint Lucia, Bolivia, Honduras, Nicaragua)
4. Implementation of consultancies to implement vulnerability assessments in the region with regard to climate resilience.
5. Three concept notes designed in a CCS-FOMIN collaboration, were presented and approved by the Pilot Program for Climate Resilience, from the Climate Investment Fund, in Haiti, Jamaica and Saint Lucia.
6. Three missions Haiti, Brazil, Argentina took place to identify such potential pilot projects.

With regard to difficulties, so far the program has not experienced relevant obstacles.

During the second semester it is expected to:

1. Present the first pilot project for MIF eligibility
2. Launch a consultancy to identify relevant experiences regarding climate change adaptation in the south cone of LAC
3. Implement missions to design projects in the PPCR context
4. Attend world conferences on climate change adaptation

Comments from the Supervision Team Leader

Agree with the Executing Agency comments

SECTION 3: INDICATORS AND MILESTONES

Indicators		Baseline	Intermediate 1	Intermediate 2	Intermediate 3	Planned	Achieved	Status
Result: Create new capacities, tools, business models and knowledge that enable MSMEs and their supporting ecosystems to reduce vulnerabilities to climate change and to seize related business opportunities	P.11 10 sub projects on adaptation for MSMEs (number depending on size of sub projects)	0				10 Jan 2018	0	
	P.12 MSMEs offering climate related products and services	0				50 Jan 2018	0	
	P.13 MSMEs demonstrating improved climate resilience against initial baseline (methodology and target to be defined in year 1 of project implementation)	0				2000 Jan 2018	0	
	P.14 MSMEs in LAC incorporating climate impacts into business decision-making (methodology and target to be defined and adjusted in year 1 of project implementation)	0				10000 Jan 2018	0	
Component 5: Program Preparation and Awareness Raising Weight: 4% Classification: High Satisfactory	C5.11 Hiring of coordinator, contracting of initial market studies for adaptation road map	0				1 Jan 2014		
	C5.12 Awareness and consultative workshops held	0	1 Jan 2014			3 Jul 2015		
	C5.13 Launch workshop	0				1 May 2014		
	C5.14 Development of program impact indicators and M&E system	0				1 Aug 2014		
	C5.15 Development of promotional and marketing materials	0				1 Jan 2014		
Component 6: Development of business models and tools for building climate resilience and new businesses opportunities Weight: 13% Classification: High Satisfactory	C6.11 Models, tools and taxonomies developed to help MSMEs in developing countries to assess, manage and prioritize financial, operational and strategic climate risks and related business opportunities,	0				5 Jan 2018		
	C6.12 Targeted market assessments to identify business opportunities related to climate adaptation in specific sectors, value chains and geographies,	0				8 Jan 2018		
	C6.13 Gender sensitive climate adaptation models developed for women-owned MSMEs.	0				2 Jan 2018		
Component 7: Individual projects for building MSME climate resilience and related business opportunities Weight: 73% Classification: High Satisfactory	C7.11 Pilot project approved	0 Jan 2013	1 Jan 2014	4 Jan 2015	5 Jan 2016	10 Jan 2018		
	C7.12 Pilot project focused on women and adaptation	0				1 Jan 2016		
Component 8: Knowledge Sharing and Dissemination Weight: 10% Classification: High Satisfactory	C8.11 Partner organizations are members in the platform	0				5 Jan 2018		
	C8.12 Knowledge transfer and sharing activities with actors in Africa or Asia	0				3 Jan 2018		
	C8.13 Knowledge and learning systematized and converted into off-the-shelf develop solutions, including manuals, training methodologies, project design, market studies, etc					Jan 2018		

Milestones

	Planned	Due Date	Achieved	Date achieved	Status
M1 Conditions Prior	1	Jul 2013			

CRITICAL ISSUES THAT HAVE AFFECTED PERFORMANCE
[None reported in this period]

SECTION 4: RISKS

MOST IMPORTANT RISKS AFFECTING FUTURE PERFORMANCE

	Level	Mitigation action	Responsible
1. MSMEs not interested in incorporating adaptation into business plans	Low	Accion de mitigacion	Project Guest
2. It is possible to develop a methodology to measure reductions in climate vulnerability	Low	PSRs and final evaluations of projects	Project Guest

PROJECT RISK LEVEL: Low **TOTAL NUMBER OF RISKS:** 2 **IN EFFECT RISKS:** 2 **NOT IN EFFECT RISKS:** 0 **MITIGATED RISKS:** 0

SECTION 5: SUSTAINABILITY

Likelihood of project sustainability after project completion: P - Probable

CRITICAL ISSUES THAT MAY AFFECT PROJECT SUSTAINABILITY

[None reported in this period]

Actions related to sustainability which will be or have been implemented:

Several consultancies are analyzing the viability and existence of business models in the context of climate change adaptation that provide sustainability to the program

SECTION 6: PRACTICAL LESSONS

[No lessons learned added yet.]