

# PROJECT STATUS REPORT

JANUARY 2012 - JULY 2012

## SECTION 1: PROJECT SUMMARY

**PROJECT NAME:** CARIBBEAN REGIONAL CAPACITY-BUILDING PROGRAM (CARIB-CAP) II

Project Number: RG-M1208 - Operation Number: ATN/ME-13184-RG

**Result:** To develop and implement a capacity-building program and create a knowledge-sharing eco-system for MFIs in the region, building on the activities of CARIB-CAP I.

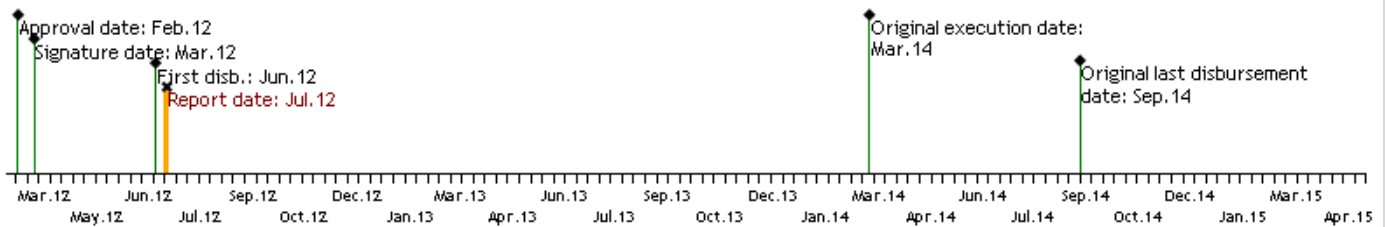
**Country Administrator**  
JAMAICA

**Beneficiary Country**  
BARBADOS, BAHAMAS, BELIZE,  
JAMAICA, SURINAME, TRINIDAD AND  
TOBAGO

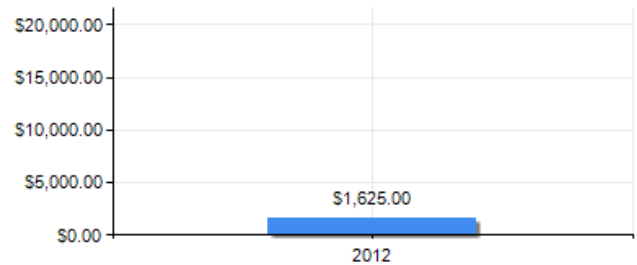
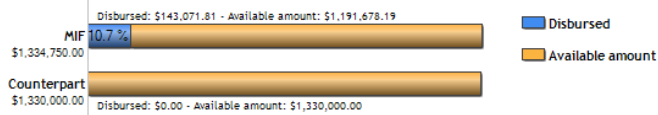
**Executing Agency:**

**Design Team Leader:** Leslie, Winsome  
**Supervision Team Leader:** Leslie, Winsome

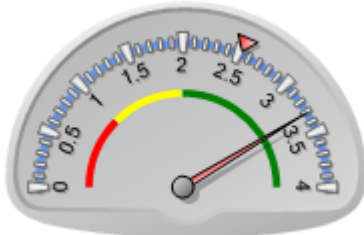
### TIMELINE



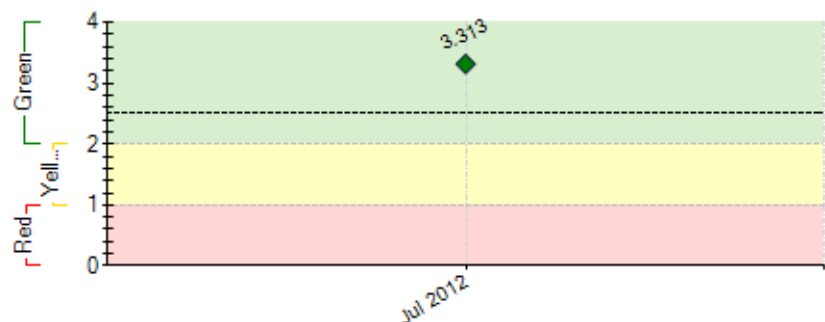
### FUNDS



### PERFORMANCE SCORE



**Current score:** Satisfactory: 3.313  
**MIF Average:** 2.526

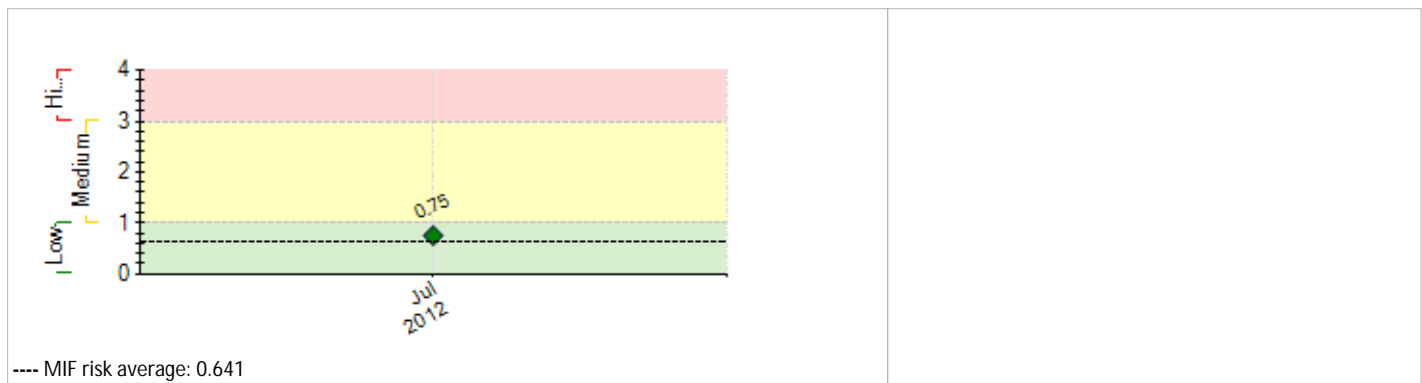


----- MIF performance average

### EXTERNAL RISKS

#### INSTITUTIONAL CAPACITY

**Risk**  
**Financial Management:** Low  
**Procurement:** Low  
**Technical Capacity:** Low



## SECTION 2: PERFORMANCE

### Summary of project performance in the last six months

Development Options (DO) Ltd. was awarded the consultancy contract to provide support to the MIF and the Steering Committee for the implementation in the field and assisting with the management of the project.

•

Contract between the MIF and DO Ltd. was signed on June 20

•

The MIF is still in negotiations with Desjardins Development International, the firm selected to provide Technical Consultancy to the project beneficiaries.

•

### Comments from the Supervision Team Leader

Agree with the Executing Agency comments

## SECTION 3: INDICATORS AND MILESTONES

Indicators	Baseline	Intermediate 1	Intermediate 2	Intermediate 3	Planned	Achieved	Status
<b>Result:</b> To develop and implement a capacity-building program and create a knowledge-sharing ecosystem for MFIs in the region, building on the activities of CARIB-CAP I.	P.I1 12 – 15 MFIs have increased by at least 50% their outreach in a sustainable way.	0			12	0	
		Mar 2012			Apr 2014	Jul 2012	
	P.I2 At least 5 institutions able to attract investment from SEP or other IDB/donor programs by the end of the project (this number includes TCs or loans for credit unions).	0			5	0	
					Apr 2014	Jul 2012	
<b>Component 1:</b> Component 1. Institutional Capacity-Building  <b>Weight:</b> 68%  <b>Classification:</b> Satisfactory	C1.I1 At least 10 MFIs have successfully developed at least 1 new product .	0			10	0	
		Mar 2012			Apr 2014	Jan 2012	
	C1.I2 At least 10 have implemented best practices in governance.	0			10		
					Apr 2014	Jul 2012	
	C1.I3 At least 5 implement best practices for social performance.	0			5	0	
					Apr 2014	Jan 2012	
	C1.I4 At least 5 institutions with a 15% to 25% yearly increase in portfolio beyond levels of CARIB-CAP I.	0			5		
		Mar 2012			Apr 2014	Jul 2012	
<b>Component 2:</b> Component 2. Consolidation of the Caribbean Microfinance Alliance (CMFA)  <b>Weight:</b> 23%  <b>Classification:</b> Satisfactory	C1.I5 The 12 to 15 institutions participating have increased their outreach on an average of 50%.	0			12		
		Mar 2012			Apr 2014	Jul 2012	
	C1.I6 At least 5 institutions with PAR reduced by a minimum of 50% from their baseline levels.	0			5		
		Mar 2012			Apr 2014	Jul 2012	
	C2.I1 One regional network (the CMFA) consolidated formally and operating in a sustainable way.	0			1		
					Apr 2014	Jul 2012	
	C2.I2 At least 7,000 clients trained in financial literacy	0			7000		
					Apr 2014	Jul 2012	
<b>Component 3:</b> Component 3: Knowledge-Sharing and Dissemination  <b>Weight:</b> 9%	C2.I3 Two MFIs and two micro-entrepreneurs have received a Citi Foundation awards.	0			2		
					Apr 2014	Jul 2012	
	C3.I1 Communication strategy complete	0			1		
		Apr 2012			Jun 2013	Jul 2012	
	C3.I2 Market studies and informal market study complete?	0			2		
					Apr 2014	Jul 2012	
	C3.I3 Report on the impact of microfinance in the region complete	0			1		

Classification: Satisfactory						Apr 2014	Jul 2012	
------------------------------	--	--	--	--	--	----------	----------	--

Milestones	Planned	Due Date	Achieved	Date achieved	Status
M1 Conditions Prior: the signature of the agreement with the EC and formal notification of the approval of the CDB and Citi Foundations contributions.	1	Sep 2012	0	Jul 2012	

**CRITICAL ISSUES THAT HAVE AFFECTED PERFORMANCE***[None reported in this period]***SECTION 4: RISKS****MOST IMPORTANT RISKS AFFECTING FUTURE PERFORMANCE**

	Level	Mitigation action	Responsible
1. MFI MIS systems too obsolete to implement changes advocated in the project.	Medium	Project provides some support to upgrade MFI MIS systems.	Project Coordinator
2. MFIs are not able to contribute resources	Low	MFIs have been asked to commit resources before project approval, payable in 3 installments over the 18-month capacity-building phase.	Project Coordinator
3. MFI Boards might not be responsive to change	Low	MFI Boards will receive microfinance training during the project, and have been asked to "sign off" on the capacity-building program for their institution.	Project Coordinator
4. CMFA fails to become consolidated during the project.	Low	Project activities are designed to position the CMFA as a provider of services for MFIs in the region. There are plans to produce a 2 year Strategic Plan and an Annual Work Plan to guide the network's activities.	Project Coordinator

**PROJECT RISK LEVEL:** Low **TOTAL NUMBER OF RISKS:** 4 **IN EFFECT RISKS:** 4 **NOT IN EFFECT RISKS:** 0 **MITIGATED RISKS:** 0

**SECTION 5: SUSTAINABILITY**

**Likelihood of project sustainability after project completion:** P - Probable

**CRITICAL ISSUES THAT MAY AFFECT PROJECT SUSTAINABILITY**

Issue	Comments
[X] Lack of <b>cost recovery</b> mechanisms or <b>external financing sources</b> (government, donors and/or private sector) to continue the activities of the project once MIF resources are expended	Additional support will be needed for the microfinance sector in the region once Carib-Cap II ends.

**Actions related to sustainability which will be or have been implemented:**

Not applicable to this project.

**SECTION 6: PRACTICAL LESSONS***[No lessons learned added yet.]*