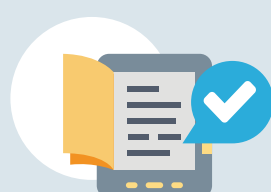


# The IDB's Draft Environmental and Social Policy Framework at a Glance

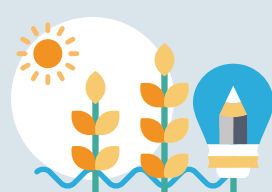
Over the last 12 months, the IDB has developed a new **Environmental and Social Policy Framework (ESPF)**.

## CORE GUIDING PRINCIPLES



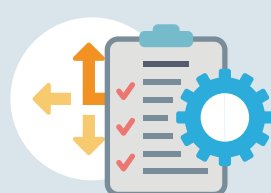
### No dilution:

The new ESPF will be as **strong or stronger** than the IDB's current policies.



### Outcome orientation:

The touchstone of our approach is **effective implementation**.



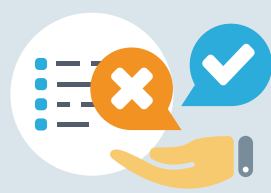
### Proportionality:

Responsibilities and requirements established by the ESPF will be **proportional** to the level of project risk.



### Transparency:

A collaborative and **inclusive participatory process** will offer meaningful opportunities for interested stakeholders.



### "Do good" beyond "do no harm":

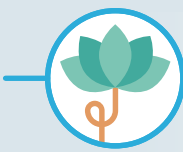
Our new ESPF will **facilitate the enhancement of social and environmental sustainability** beyond the mitigation of adverse impacts.

## HIGHLIGHTS

The Environmental and Social Policy Framework includes the IDB's responsibilities in a Policy Statement and borrower's requirements in ten Environmental and Social Performance Standards. **Key features include:**

### Environmental

- **Protection of biodiversity**, allowing offsets to be used as mitigation measures only when critical habitat is not involved.
- Borrowers to systematically **assess their projects vulnerability to natural hazards and climate change**.



### Social

- Explicit IDB long-standing commitment to respecting **human rights**, including indigenous, Afro-descendent, and other traditional peoples' rights.
- **Non-discrimination** and inclusion of vulnerable groups.
- **Gender equality** through a dedicated standard.
- **Labor rights and worker protection** in accordance with international agreements.
- Measures to avoid or **minimize the risks and impacts to community health, safety, and security**, including risks exacerbated by local context.
- Through a dedicated standard, **recognizes ongoing stakeholder engagement** and information disclosure.

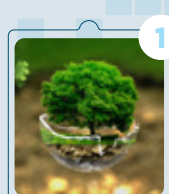


### Institutional

- **Dynamic approach to environmental and social risk management** throughout project implementation.
- Capacity building through **effective systems of environmental and social management**.
- Common approach for **co-financed operations** with other institutions to **facilitate project design and implementation**.



## E&S PERFORMANCE STANDARDS



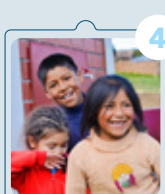
**1**  
Assessment and management of environmental and social risks and impacts.



**2**  
Labor and working conditions.



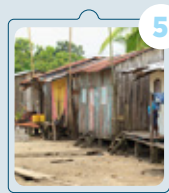
**3**  
Resource efficiency and pollution prevention.



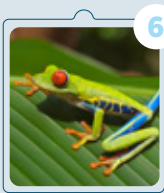
**4**  
Community health, safety and security.



**9**  
Gender equality.



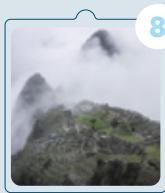
**5**  
Land acquisition and involuntary resettlement.



**6**  
Biodiversity conservation and sustainable management of living natural resources.



**7**  
Indigenous Peoples.



**8**  
Cultural Heritage.



**10**  
Stakeholder engagement and information disclosure.



The **IDB** will require that its Borrowers meet these ten standards throughout the project cycle. The performance standards will serve as the basis for the Bank's screening, classification, due diligence, monitoring and risk management.

## INVITATION TO PARTICIPATE

**Public Consultation is open** through a dedicated Website and open public meetings.

**We value your comments, suggestions, feedback and active engagement.**  
To participate please **visit [www.iadb.org/mpas](http://www.iadb.org/mpas)**