

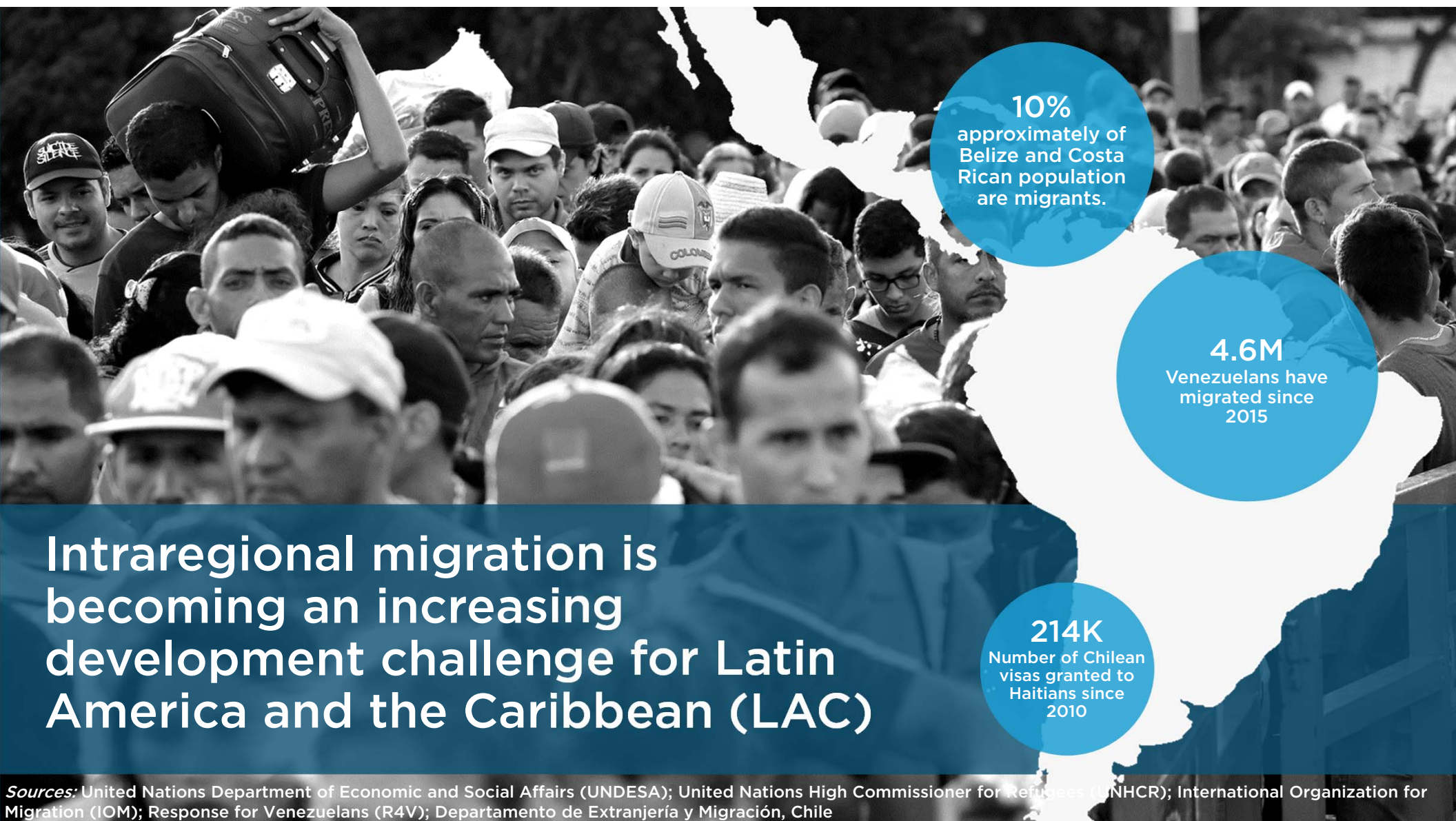


Migration Initiative

November 2019



PUBLIC | Under the Access to Information Policy, this document is subject to Public Disclosure.



10%
approximately of
Belize and Costa
Rican population
are migrants.

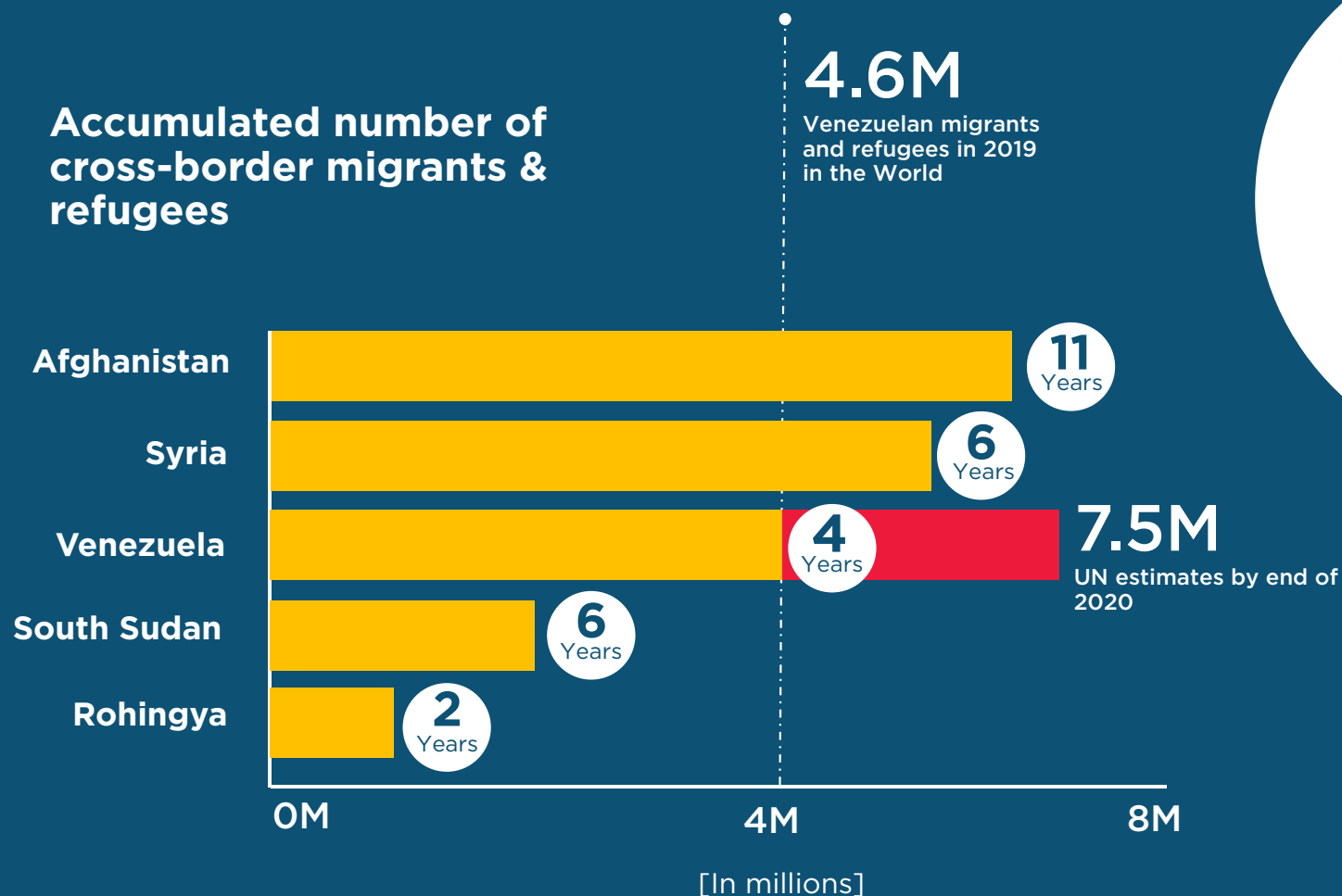
4.6M
Venezuelans have
migrated since
2015

214K
Number of Chilean
visas granted to
Haitians since
2010

Intraregional migration is becoming an increasing development challenge for Latin America and the Caribbean (LAC)

Sources: United Nations Department of Economic and Social Affairs (UNDESA); United Nations High Commissioner for Refugees (UNHCR); International Organization for Migration (IOM); Response for Venezuelans (R4V); Departamento de Extranjería y Migración, Chile

Accumulated number of cross-border migrants & refugees



The growth rate of Venezuelan displaced is as high as that of the Syrian refugee crisis

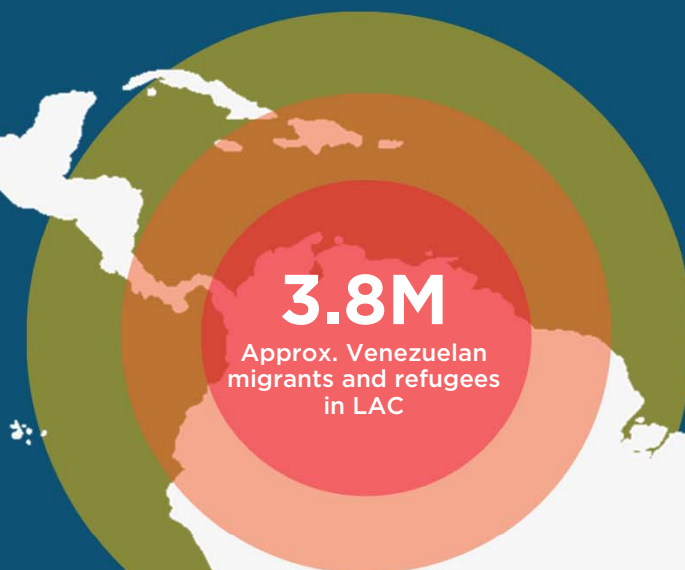
Years since the start of the crisis



1.5M
Colombia

1.6M
Peru, Ecuador &
Chile

700K
Other countries in
the region



Venezuelan exodus has now spread across LAC

52%

of migrant
children are not
attending
schools

34%

do not have
regular status

66%

are unemployed or
working informally

Sources: United Nations High Commissioner for Refugees (UNHCR); International Organization for Migration (IOM); Response for Venezuelans (R4V)

The economic and social impact of large and sudden migration inflows



Macro-Fiscal Costs (%GDP)

- Colombia: 0.4% GDP (US\$1.4B)
- Ecuador: 0.5% GDP (US\$500M)



Development Gaps

- Most migrants settle in already poor and vulnerable communities with important development gaps



Political Costs

- Increased risk of xenophobic sentiments


Sources: Fedesarrollo; Ministerio de Relaciones Exteriores y Movilidad Humana, Ecuador



**IDB New Non-Reimbursable
Facility to Support Countries
with Large and Sudden
Migration Flows**

**ELIGIBLE COUNTRIES
2019**

Operations



A map of Latin America and the Caribbean is shown with a green background. Orange dots are placed on the map to indicate the locations of eligible countries. The dots are located in Central America (Belize), Colombia, Costa Rica, Ecuador, Guyana, Panama, Peru, and Trinidad & Tobago.

Belize
Chile
Colombia
Costa Rica
Ecuador
Guyana
Panama
Peru
Trinidad & Tobago

Highly targeted concessional investment loans to support migrants and their host communities in key priority sectors

Operations



**Social
Services**



**Basic
Services**



**Citizen
Services**



**Economic
Opportunities**



Operations

~US\$400M

7 projects in preparation in
4 countries

~US\$50M

IDB Non-Reimbursable Facility

~US\$29M

Donors

As of November, 2019

US\$49M

Confirmed Grants



US\$11.5M



US\$10M



US\$7.5M



US\$5M



US\$5M



Advanced negotiation



US\$10M

USAID/IDBLab “Better Together” Challenge

Operations

US\$1 →
US\$1

GRF leverage of total
donor contributions

(As of November 2019)



Innovation in project design and focalization

Geographic targeting from anonymized cell phone data

Quick data collection through mobile application

The issue we are solving

How can we assure that our interventions will benefit both migrants and their host communities?

The issue we are solving

How can we assure that our interventions will respond to the needs of migrants and their host communities?



Innovative Solutions for Health & Social Protection



3x increase in maternal mortality cases in
Colombia

2,700 unaccompanied minors crossed to
Ecuador (last 6 months)

CHALLENGES

Sustainability of the health system

Uptick of communicable diseases

Increased demand for maternal and infant health
services

Unaccompanied minors and women-girls traveling
alone

PROPOSED SOLUTIONS

Eliminate barriers to health insurance affiliation
and increase health coverage

Strengthen health sector coordination and service
delivery model (national and sub-national)

Develop innovative instruments for rapid diagnosis
for maternal and infant care

Provide temporary accommodations and
psychological and legal support



Innovative Solutions for Housing & Water and Sanitation

75% population without access to drinking water in La Guajira

50% migrants are homeless in Colombian border towns

CHALLENGES

- Increased homelessness and temporary housing
- Overcrowded households and lack of basic services
- Increased health risks due to inappropriate sanitation
- Spike in water demand and illegal water connections

PROPOSED SOLUTIONS

- Offer housing rental assistance and rental guarantee funds
- Develop targeted urban planning for urban infrastructure
- Extend migrant assistance models in urban environments
- Develop innovative solutions for temporary, mobile and shared housing



Innovative Solutions for Education & Employment

13% Nicaraguan children out of school in
Costa Rica

25-60% unemployment in Colombian
border towns

CHALLENGES

Limited early education opportunities

Multicultural learning environments

Barriers to skill certification and labor market
information gaps

Inefficient labor market matching opportunities

PROPOSED SOLUTIONS

Offer school level adjustment and acceleration

Support to stay in school and promote inclusive
integration

Strengthen skill accreditation agencies and training
programs

Develop innovative technologies for job market
searching and matching

Crowdsourcing Innovation



USAID
FROM THE AMERICAN PEOPLE

“Better Together” Challenge

A global initiative to crowdsource, fund, and scale innovative solutions from innovators worldwide to support Venezuelan migrants and their host communities

juntosesmejorve.org



Knowledge

A comprehensive policy research report on migration in LAC



PROFILES



PERCEPTIONS



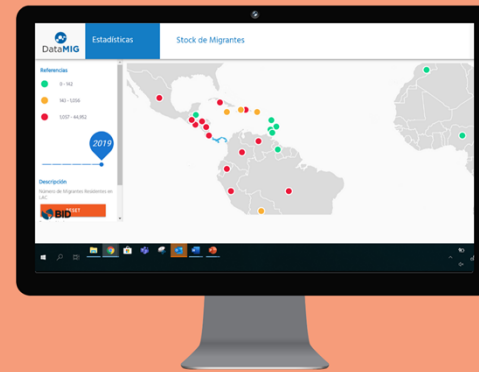
POLICIES &
INSTITUTIONS



IMPACT



DataMIG



Datamig.org

- Migration Statistics
- Migration Policy Indicators
- Visas in LAC
- International Agreements

Knowledge

Capacity Building

To provide learning spaces for public officials and all those working on migration issues



First course on
Coordinated Migration
Border Management

216

Public officials have applied

46%

Women have applied



Policy Dialogues



Caribbean Subregional
Policy Dialogue

Q1 2020

LAC
Regional
Policy Dialogue
2020

Institutional Partners



MDBs Platform on Migration and Forced Displacement



Private Sector Partners



TENT



Migration Initiative



migraciones.iadb.org