



Institute for the Integration of Latin
America and the Caribbean

Activity Report INTAL

2009



@ E-Journal

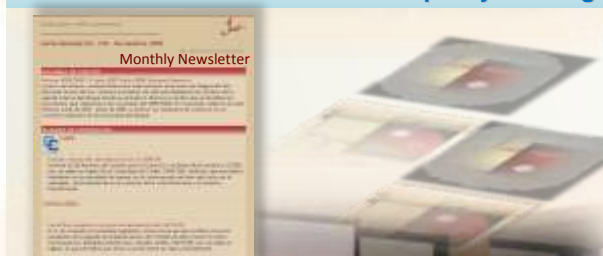


I.I.R.S.A.

Physical Integration



Capacity Building



@ Monthly Newsletter



Seminars and Workshops



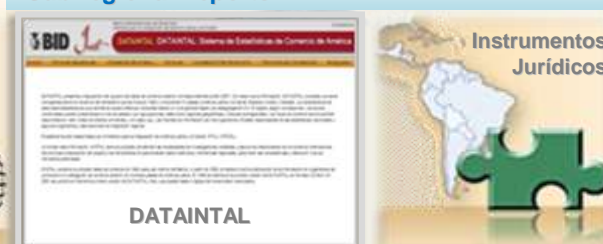
Sub-regional Reports



Documentation Center

Networks

Data Bases



Instrumentos
Jurídicos

TABLE OF CONTENTS

INTAL – Institute for the Integration of Latin America and the Caribbean	3
2009 WORK PROGRAM	4
A. Support to Regional Integration and Programming	4
B. Support to Physical Integration Processes through Infrastructure Development and Cooperation	4
♦ INITIATIVE FOR THE INTEGRATION OF REGIONAL INFRASTRUCTURE IN SOUTH AMERICA – IIRSA	5
C. Training and Capacity Building in Trade and Integration	10
♦ IDB/WTO PROGRAM TO SUPPORT TRADE NEGOTIATIONS	10
♦ OTHER INTEGRATION-RELATED TRAINING ISSUES	12
D. Support to the Creation and Dissemination of Knowledge on Trade and Integration	13
♦ SUPPORT TO RESEARCH NETWORKS FOR SUSTAINING POLICY REFORMS	13
♦ SEMINARS, WORKSHOPS AND OUTREACH ACTIVITIES CONCERNING INTEGRATION ISSUES	14
♦ PUBLICATIONS	16
♦ INFORMATION AND DOCUMENTATION SERVICES	17
▪ Outreach Tools	17
▪ INTAL Documentation Center	19
▪ Databases	23
ACRONYMS AND ABBREVIATIONS	24



INTAL

Institute for the Integration of Latin America and the Caribbean ¹

INTAL is a unit of the IDB. Since its beginnings in 1965, **INTAL** has supported the Bank's regional integration strategy. Throughout its history, it has been devoted to creating and disseminating knowledge on the benefits of integration processes. Since 2000, the Institute is also the Secretariat of IIRSA Technical Coordination Committee (CCT), thus contributing to physical integration initiatives in the region.

INTAL (VPC/INL) is part of the IDB Vice-Presidency for Countries and also coordinates activities with the Integration and Trade Sector of the Vice-Presidency for Sectors and Knowledge (VPS/INT).

INTAL's activities meet the growing demand for capacity building in regional and multilateral integration and cooperation by governments as well as the private sector, the civil society, labor and academia.

In order to meet those goals, **INTAL's** work program supports the following areas: **(A)** Regional cooperation and planning; **(B)** Physical integration processes through infrastructure development and cooperation; **(C)** Training and capacity building in trade and integration, and **(D)** Creation and dissemination of knowledge on trade and integration.



Thus, **INTAL's** mission preserves its identity
with its originating principles:
to actively assist the governments of
IDB's Member Countries as a platform for the
regional action of the Bank.

¹ <http://www.iadb.org/intal/index.asp?idioma=ENG>

2009 WORK PROGRAM

In 2009, the Institute supported the following:

- (A) Regional Cooperation and Planning
- (B) Physical Integration Processes through Infrastructure Development and Cooperation
- (C) Training and Capacity Building in Trade and Integration
- (D) Creation and Dissemination of Knowledge on Trade and Integration

A. Support to Regional Cooperation and Planning

Regional planning is an analytical exercise by the Bank to identify priorities and design activities and projects aimed at supporting the integration process. This planning exercise, led by VPC with the technical support of VPS/INT, calls for the participation of many stakeholders—governments, subregional agencies and the civil society, among others. In fact, integrating various subregions involves a wide spectrum of fields, trade being only one. Due to its technical expertise in this arena, INTAL supports consultation with regional actors, planning exercises and technical cooperation.

◆ CENTRAL AMERICA, INCLUDING MESOAMERICA AND THE DOMINICAN REPUBLIC

In 2009, the first draft regional strategy was prepared. This strategy resulted from studies conducted in collaboration with the Bank's experts in relevant areas, and from meetings attended by management and the technical team appointed to that purpose. Members of the Bank units were scheduled to meet at early 2010 for updating, validating and editing the final version of the document. Once the strategy is finalized, bilateral meetings will be held in the countries of the region to address final intervention areas and implementation.



B. Support to Physical Integration Processes through Infrastructure Development and Cooperation

Over the last years, physical integration policies have been key items on the integration agenda. The IDB has been promoting physical integration through studies,² dialogue with governments and support to regional integration initiatives—the Mesoamerica Project³ and IIRSA are clear examples of the Bank's priorities. As indicated below, INTAL plays a significant role in IIRSA.

² *Unclogging the Arteries: The Impact of Transport Costs on Latin American and Caribbean Trade*. Mauricio Mesquita Moreira, Christian Volpe, Juan S. Blyde. BID-VPS/INT, Harvard Univ., 2008.

³ <http://www.proyectomesoamerica.org/>

What is IIRSA?

IIRSA is an innovative **intergovernmental cooperation mechanism** seeking a common agenda that includes actions to support the development of physical integration in South America. IIRSA supports the regional development of transport, energy and communications infrastructure, aiming at physically integrating the twelve South American countries and pursuing an equitable and sustainable territorial development pattern. IIRSA was created in August, 2000, at the Meeting of South American Presidents in Brasilia, when the regional heads of states agreed upon joint actions for South American political, social and economic integration, streamlining regional infrastructure and specific measures to integrate and develop isolated subregions.

The Initiative is presided over by the Presidency Pro-Tempore (PPT), taken over on a rotating basis by its Member Countries; Argentina was elected as PPT in 2009 and it will serve until the second half of 2010.

The intergovernmental cooperation process is supported by the **Technical Coordination Committee** (CCT), made up of three multilateral financial institutions working in the region—the IDB, the Andean Development Corporation (CAF), and the Financial Fund for the Development of the River Plate Basin (FONPLATA). The CCT is permanently based at INTAL and its Secretariat is headed by the INTAL Director. In addition, INTAL provides specific assistance to the Initiative. The IDB, on its part, has a technical team which coordinates IIRSA's activities (VPC/IIRSA).

● INTAL as IIRSA CCT Secretariat

■ Overview

The CCT Secretariat coordinates activities with the CCT Institutions (IDB, CAF and FONPLATA) and serves as a liaison between the CCT and the National Coordinators. The Secretariat also provides organizational and logistical assistance for the execution of the work program.

The **INTAL Director serving as CCT Secretary** is accountable for: **(i)** drafting the annual Work Program and its contents jointly with the CCT Institutions; **(ii)** attending and representing the CCT in conferences and technical seminars on IIRSA-related topics; **(iii)** overseeing and counselling on technical studies and activities, as needed; and **(iv)** maintaining a close contact with the PPT and liaising with the CCT.

On the other hand, **the Secretariat** is accountable for: **(i)** supporting and keeping track of the annual Work Program execution; **(ii)** liaising CCT Institutions and National Coordinators; **(iii)** drawing up agendas and providing logistical assistance to the Work Program technical and governmental meetings; **(iv)** managing

⁴ <http://www.iirsa.org/>

and updating IIRSA's webpage; (v) preparing and distributing IIRSA outreach material; (vi) attending to third parties interested in the Initiative; (vii) following up on the terms of reference of the consultants hired by the CCT Institutions to support IIRSA activities; and (viii) classifying and distributing IIRSA or IIRSA-related documents and information.

■ Organization of IIRSA meetings

Throughout 2009, the CCT Secretariat actively supported IIRSA's endeavours and, in this context, organized a total of 11 meetings, whose agendas focused on various technical aspects, training, portfolio review and update, and IIRSA's coordination activities. Nine of these meetings were attended by the twelve countries that make up the Initiative. The details of the 11 conferences are:

MARCH		
16-19	Santa Cruz, Bolivia	GTE meeting. Paraguay-Parana Waterway, Mercosur-Chile, Capricorn and Southern Hubs
APRIL		
15-17	Lima, Peru	GTE meeting. Andean, Peru-Brazil-Bolivia, Amazon and Central Interoceanic Hubs
MAY		
4	Cusco, Peru	GTE meeting. South American Roaming Agreement project
19	Buenos Aires, Argentina	Workshop on Export through Postal Services for SMEs
20	Buenos Aires, Argentina	GTE meeting. Export through Postal Services for SMEs
21-22	Buenos Aires, Argentina	Strategic Thinking Forum
AUGUST		
25-26	Buenos Aires, Argentina	XIV Meeting of National Coordinators
27-28	Buenos Aires, Argentina	Induction Workshop on the Use of Online Geographic Services and GeoSUR Applications in Territorial Planning
SEPTEMBER		
7-11	Buenos Aires, Argentina	Training Workshop on Integration and Development of South American Regional Infrastructure
NOVEMBER		
4-6	Buenos Aires, Argentina	XV Meeting of National Coordinators
DECEMBER		
3-4	Buenos Aires, Argentina	XI Meeting of the Executive Steering Committee

■ Further Support to IIRSA

In addition, the CCT Secretariat coordinated and/or supported the following activities performed by IIRSA in 2009:

- ✓ Training Workshop on Integration and Development of Regional Infrastructure in South America,⁵ held at INTAL Auditorium and intended for officials of the twelve Member Countries.



- ✓ “Notes on Infrastructure and Integration in South America,”⁶ a document including the teaching material used in the Training Workshops on Integration and Development of Regional Infrastructure in South America, organized by the CCT Institutions, held in 2008 and 2009.

- ✓ “Exports through Postal Services. Potential Benefits of Implementing a Simplified System: the case of Uruguay,”⁷ a technical document for SMEs wishing to export which identifies the products and businesses that may derive benefits from the implementation of exports through postal services.



- ✓ “Initiatives to Improve the South American Roaming Services Market: Analysis and Recommendations,”⁸ a technical document on the South American Roaming Agreement project e with the key findings and results of the Regional Study on the South American Roaming Services Market.

- ✓ “South American Integration and the Role of Infrastructure,”⁹ a Strategic Thinking Forum aimed at providing the Initiative with strategic thinking inputs.



- ✓ Meeting with Mesoamerica Project¹⁰ representatives in order to promote the articulation and convergence of both regional integration Initiatives, in line with the presidential mandates resulting from the Latin America and Caribbean Summit on Integration and Development, held in December 2008.

⁵ www.iirsa.org/BancoEvento/C/cap_baires09_curso_iirsa/cap_baires09_curso_iirsa_ENG.asp?CodIdioma=ENG&CodSeccion=64

⁶ [/www.iirsa.org/BancoConocimiento/C/cap_documento_taller08y09/cap_documento_taller08y09_ENG.asp?CodIdioma=ENG](http://www.iirsa.org/BancoConocimiento/C/cap_documento_taller08y09/cap_documento_taller08y09_ENG.asp?CodIdioma=ENG)

⁷ www.iirsa.org/BancoConocimiento/E/exportafacil_luis_lucioni_caso_uruguay/exportafacil_luis_lucioni_caso_uruguay.asp?CodIdioma=ENG

⁸ www.iirsa.org/BancoConocimiento/R/roaming_suramericano_resumen_estudio/roaming_suramericano_resumen_estudio_ENG.asp?CodIdioma=ENG

⁹ www.iirsa.org/BancoEvento/F/foro_baires09_reflexion_estrategica/foro_baires09_reflexion_estrategica_ENG.asp?CodIdioma=ENG&CodSeccion=64

¹⁰ http://www.iirsa.org/BancoEvento/C/cnr14_xiv_reunion_de_coordinadores_nacionales/cnr14_xiv_reunion_de_coordinadores_nacionales_ENG.asp?CodIdioma=ENG&CodSeccion=64

- ✓ IIRSA Project Database with information on the meetings of the Integration Hub (EID) Executive Technical Groups (GTE), held in 2009.

- ✓ Publications: (i) *Indicative Territorial Planning – IIRSA Project Portfolio 2009*,¹¹ a book describing the current status of IIRSA Project Portfolio as of 2009, the dynamics and rationale for action, and the progress made by countries in managing and identifying intervention priorities based on the mid- and long term indicative territorial planning; (ii) *Fifth AIC Report 2005-2010*,¹² which describes the current status and progress made on IIRSA project implementation (31 projects) based on the Strategic Management Information System (SIGE) data; and (iii) outreach brochures summarizing the Project Portfolio and the Integration and Development Hubs.



- ✓ Webpage content redistribution for easier access and browsing.
- ✓ Direct access from the webpage to the Project Database and GeoSUR Program maps..
- ✓ Repository for IIRSA documentation and material, in conjunction with INTAL Documentation Center.

● INTAL Technical Support to IIRSA

In 2009, INTAL conducted support activities for the implementation of the following:

- ✓ **Application of the Strategic Environmental and Social Evaluation Methodology (EASE)** - The EASE Methodology¹³ is being applied to Project Group 2 of the Southern Hub. This Methodology contributes to the sustainable planning of infrastructure. Being a sound tool, the EASE Methodology may help identify and preventively approach all the complementary actions required to tap, from a socio-environmental and cultural viewpoint, the positive effects of the projects while minimizing their negative impact. This Methodology operates on the area of influence of IIRSA project groups. The following meetings were held in 2009:



¹¹ www.iirsa.org/BancoConocimiento/L/lb09_cartera_de_proyectos_iirsa_2009/lb09_cartera_de_proyectos_iirsa_2009_ENG.asp?CodIdioma=ENG

¹² www.iirsa.org/BancoMedios/Documentos%20PDF/aic_informe_2009.pdf

¹³ www.iirsa.org/BancoConocimiento/E/evaluacion_ambiental_estrategica/evaluacion_ambiental_estrategica_ENG.asp?CodIdioma=ENG

<i>Date</i>	<i>Place</i>	<i>Workshop</i>
October 5	Santiago, Chile	Preparatory Meeting: Application of EASE to the Southern Hub Project Group 2.
November 18—20	Santiago, Chile	Start-up Workshop on the Application of EASE to the Southern Hub Project Group 2.

✓ **Training in and Application of Production Integration and Logistics**

Methodology – This program¹⁴ seeks to train experts from IIRSA Member Countries in the use of this methodology based on the experiences gathered until now, so that the material developed for this activity as well as its outcomes can be disseminated and published.¹⁵ In 2009, the following Workshops were conducted:



<i>Date</i>	<i>Place</i>	<i>Workshop</i>
March 10—12	Curitiba, Brazil	Final Regional Workshop - Application to Group 3 – Asunción - Paranagua
March 31—April 2	Arica, Chile	Regional Workshop Stage III - Application to Group 5 - Connections to the Pacific Ocean
June 3—4	Asunción, Paraguay	Regional Workshop on Logistics and Transport Facilitation
June 24—26	Santa Cruz de la Sierra, Bolivia	Final Regional Workshop - Application to Group 5 - Connections to the Pacific Ocean
September 29—October 1	Arica, Chile	Tri-national Workshop on Logistics Training
October 6—8	Bogotá, Colombia	Regional Start-up Workshop – Application to Group 5 - Colombia– Ecuador–Peru Connections
November 24—26	Quito, Ecuador	Regional Workshop Stage III - Application to Group 5 - Colombia– Ecuador–Peru Connections

✓ **Regional Network of Success Cases in Infrastructure Service Provision**¹⁶ – The support program to this network, as adopted by the Bank and also executed by INTAL, seeks to promote and fund the exchange of success cases among IIRSA Member Countries and other regional physical integration initiatives. In 2009, the following visits were made:

¹⁴ www.iadb.org/intal/detalle_tipo.asp?tid=5&cid=234&idioma=ENG

¹⁵ www.iirsa.org/BancoConocimiento/l/iplrg_presentacion_general/iplrg_presentacion_general_ENG.asp?CodIdioma=ENG

¹⁶ www.iirsa.org/BancoConocimiento/C/caex_caracteristicas_generales/caex_caracteristicas_generales_ENG.asp?CodIdioma=ENG

<i>Date</i>	<i>Place</i>	<i>Model Country</i>	<i>Interested Country</i>	<i>Topic</i>	<i>Type of visit</i>
June 22—26	Asunción, Paraguay	Colombia	Paraguay	Integrated Mass Transportation System	Diagnosis
July 6—10	Brasília and São Paulo	Brazil	Colombia	Export through Postal Services for SMEs	Approach
August 27—31	Bogotá, Cali and Pereira, Colombia	Colombia	Paraguay	Integrated Mass Transportation System	Approach
September 3—4	Asunción, Paraguay	Argentina and Peru	Paraguay	Road Safety, i-Rap Methodology	Approach
September 28—October 2	Asunción, Paraguay	Argentina and Peru	Paraguay	Road Safety, i-Rap Methodology	Diagnosis
October 26—30	Panama	Panama	Chile	Multimodal Logistics Platform in the Port	Approach
November 2—11	Bogotá and Medellín, Colombia	Colombia	Uruguay	Integrated Mass Transportation System	Approach



C. Training and Capacity Building in Trade and Integration

The objective of INTAL training programs is to strengthen the capacity for negotiating and implementing trade agreements of Latin American and Caribbean government officials. These programs are also targeted to the academic community and different sectors of the civil society.



◆ IDB/WTO PROGRAM TO SUPPORT TRADE NEGOTIATIONS

In 2009, INTAL and the Integration and Trade Sector (VPS/INT) continued cooperating with the WTO Secretariat, having thus completed the twelfth year of joint work. These activities have been taking place within the framework of IDB/INTAL-WTO Training Program for Trade Negotiators from Latin America and the Caribbean.

Courses and workshops are given by experts from WTO and IDB. The topics are closely related to the dynamics of the trade negotiating process, with a particular focus on the Doha Agenda and its significant impact on the countries in the region.

Within the framework of this program, courses and workshops are also organized for academia and different sectors of the civil society.

Throughout 2009, 7 courses and workshops were held in 5 countries and were attended by about 400 government officials from 33 countries in Latin America and the Caribbean. The list below shows the developed courses for the reported period:



IDB/WTO Program – 2009 Courses			
Event	Organizers	Date	Venue
Regional Workshop on Agriculture World Trade and the Doha Round Negotiations	IDB-INTAL, WTO, Government of Spain	May 18–19	Buenos Aires, Argentina
Workshop on NAMA for Caribbean Countries	IDB-INTAL, WTO, CRNM	June 30–July 2	Kingston, Jamaica
Course/Workshop on NAMA for Latin American Countries	IDB-INTAL, WTO, Government of Spain	July 28–31	Bogota, Colombia
IX Brief Course on Trade Policy for ALADI Countries	IDB-INTAL, WTO, ALADI, IICA, Government of Spain	September 28 October 9	Montevideo, Uruguay
Regional Seminar on The General Agreement on Trade in Services (GATS)	IDB-INTAL, WTO, Government of Spain	October 13–15	Buenos Aires, Argentina
Regional Course on Dispute Settlement within the WTO	IDB-INTAL, WTO, Government of Spain	November 9–13	Raúl Prebisch Auditorium, INTAL
Regional Seminar on Trade and Development for Caribbean Countries	IDB-INTAL, WTO, CARICOM	December 9–11	Bridgetown, Barbados



◆ OTHER INTEGRATION-RELATED TRAINING ISSUES

INTAL, together with other Bank units, also conducts training activities related to other regional and hemispheric negotiation frameworks in order to cover for more specific capacity-building demands and needs. Hence, the Institute promotes the participation of the civil society, i.e. labor, the private sectors, academia and NGOs, in courses specially tailored to cater for the needs of these groups.



Training Workshop on Integration and Development of South American Regional Infrastructure

Organized by IIRSA Technical Coordination Committee Secretariat and held at the INTAL Auditorium. The Institute played an active role in content development, academic coordination and funding.



Strengthening Regional Integration and Entry into International Markets

This course was delivered in the context of an Executive Training Program for intra-regional government officials organized by the Bank, through the Integration and Trade Sector (VPS/INT), in collaboration with INDES (Inter-American Institute for Economic and Social Development) and INTAL. The Program provides insights into the policies and institutions that strengthen regional integration and entry into international markets, and describes how to counter the adverse effects of the financial crisis. The course proposed policies and tools for Latin American countries, presented the key findings of relevant IDB studies and shared the Bank's experience in operational and technical assistance in the region.



D. Support to Creation and Dissemination of Knowledge on Trade and Integration



◆ SUPPORT TO RESEARCH NETWORKS FOR SUSTAINING POLICY REFORMS

Supplementing the task performed and led by the Integration and Trade Sector (VPS/INT) regarding research networks, INTAL supports research capacity building in integration-related topics in Latin America and the Caribbean, based on its relationship with other regions.

Latin America/Caribbean and Asia/Pacific Economics and Business Association



The IDB, through VPS/INT and INTAL, and the Asian Development Bank (ADB), through the ADB Institute, have undertaken a joint initiative to promote and launch LAEBA in order to strengthen the links between Latin America and the Caribbean and Asia/Pacific in response to a growing need in both regions for the development of an interregional mechanism to link academic research, policymakers and the private sector.

LAEBA V Annual Meeting “Accelerating Regional Integration in the Asia-Pacific Region”¹⁷ was held in July 2009, in Singapore, jointly with the Singapore APEC Study Centre and in cooperation with the Institute of Southeast Asian Studies.



Integration Research Network

The Integration Research Network (RedINT) strengthens research experience and capacity by resorting to individual or team experts from Latin America and the Caribbean who work on integration-related issues. This project is executed by INTAL in coordination with the technical support of the Integration and Trade Sector (VPS/INT).

Through VPS/INT and INTAL, the IDB organized the “Workshop on Trade, Regional Disparities and Development: The Challenge of Integrating Countries and Regions,”¹⁸ held at the INTAL Auditorium in Buenos Aires, September 2009, to analyze the case studies submitted by Argentina, Chile, Colombia, Peru and Uruguay that were selected from a March 2009 call for papers.



Euro-Latin Study Network on Integration and Trade

The Inter-American Development Bank (IDB), through its Special Office in Europe (ORP/EUR), the Integration and Trade Sector (VPS/INT) and INTAL, launched the Euro-Latin Study Network on Integration and Trade (ELSNIT). This initiative has created in Europe a forum on integration and trade relevant to Latin America and the Caribbean, its main objectives being to foster research, studies and

¹⁷ www.iadb.org/intal/detalle_evento.asp?cid=258&origen=CA&id=378&idioma=ENG

¹⁸ www.iadb.org/intal/detalle_evento.asp?cid=255&origen=CA&id=381&idioma=ENG

debate drawing on the rich European experience and perspectives, and to increase interaction between European and Latin American researchers.

At present, the ELSNIT Committee includes the following institutions: Centre d'Etudes Prospectives et d'Informations Internationales (CEPII), Paris, France; Kiel Institute for World Economics (IfW), Kiel, Germany; European University Institute (EUI), Florence, Italy; Institut Barcelona d'Estudis Internacionals (IBEI), Barcelona, Spain; St. Gallen University, St. Gallen, Switzerland; KITeS-Bocconi University, Milan, Italy; Centre for Economic Policy Research (CEPR), London, United Kingdom, and IDB, represented by VPS/INT and INTAL (VPS/INL).

INTAL, together with the Kiel Institute, organized the VII Meeting of ELSNIT¹⁹ held in Kiel, Germany, October 2009, to analyze the documents previously selected from a March 2009 call for papers. The main topic was Trade and Regional Disparities.

Networks Meetings – 2009		
Event	Date	Venue
LAEBA V Annual Meeting	July 15	Singapore
Workshop on Trade, Regional Disparities and Development: The Challenge of Integrating Countries and Regions (RedInt)	September 1-2	Buenos Aires
VII Annual Meeting of ELSNIT	October 23-24	Kiel



◆ SEMINARS, WORKSHOPS AND OUTREACH ACTIVITIES CONCERNING INTEGRATION ISSUES



These events include activities for addressing and disseminating integration and trade-related issues, with the participation of representatives from business, academia and the labor sector, in order to strengthen knowledge on present and future events in this area.

INTAL, jointly with the Media Relations Unit (EXR) and the Integration and Trade Sector (VPS/INT) organized the Regional Seminar “Latin America: Trade and Integration in the New Arena of the International Economy,”²⁰ held at INTAL Auditorium, October 15-16, 2009. The meeting brought together a group of Latin American specialists and journalists with a view to facilitating dialogue on the present situation of trade and integration in the region. The seminar discussed the current situation experienced by the multilateral trading system and the international financial architecture, the impacts of the crisis on Latin American and Caribbean subregional trade flows, the new issues on the international economic agenda, and physical integration problems and opportunities. Through active discussion and

¹⁹ www.iadb.org/intal/detalle_articulo.asp?idioma=ENG&aid=322&cid=259&nivel=

²⁰ www.iadb.org/intal/detalle_evento.asp?cid=421&origen=CA&id=386&idioma=ENG

dialogue, participants got a better insight into the various dimensions of the problem, the status of the debate, and the international political economy underlying the current context and subregional integration processes in Latin America and the Caribbean.



INTAL has also been invited to participate or support other activities by providing assistance on technical content, logistics and/or finance:

Other Outreach Activities – 2009			
Event	Organizers	Date	Venue
Argentina and the world: Economic and Political Perspectives for 2009	IDEA	March 12	Buenos Aires, Argentina
EXPODEVELOPMENT 2009	Chamber of Commerce	March 27-31	Medellin, Colombia
South-South Cooperation Seminar	MRECIC – DGCI	April 14	Buenos Aires, Argentina
Regional Seminar: Towards Latin American Capital Market Integration and Convergence	CEF – COSUDE – KPMG - INTAL	May 13	Buenos Aires, Argentina
IDB as a Regional Partner. Design and Execution of Multi-country and Regional Public Goods Projects	VPS/INT (BPR) - INTAL	July 20-21	Montevideo, Uruguay
Knowledge Clusters. Projects for Investment Consolidation. Regional Public Goods Programs	VPS/INT (BPR) - INTAL	July 23-24	Montevideo, Uruguay
International Seminar on South America in the Crisis: Integration Consequences	CINDES	September 25	Rio de Janeiro, Brazil
Seminar on the New Role of the State within Mercosur after the International Economic Crisis regarding Energy Policies, Large Cross-border Infrastructures and Health	French Embassy in Argentina	September 28	Buenos Aires, Argentina
Regional innovation Systems in Latin America: Methodology Workshop	VPS/INT - INTAL	September 28-29	Raúl Prebisch Auditorium, INTAL
Trade, Currency and Finance Workshop	MRECIC Argentina WTO - INTAL	October 26-27	Raúl Prebisch Auditorium, INTAL
Climate Change, Trade and Regional Cooperation in Latin America	Red Mercosur - CEBRI – INTAL	November 17	Rio de Janeiro, Brazil
WTO Seminar: Trade and Climate Change	WTO - CEI – INTAL	November 19	Raúl Prebisch Auditorium, INTAL
Possible Scenarios for MERCOSUR	INCIDIR Foundation	November 26	Buenos Aires, Argentina



◆ PUBLICATIONS



INTAL is responsible for three publications: the *Integration & Trade* journal, the *Monthly Newsletter* and the *Sub-regional Integration Report Series*. All three publications are available on the web. There are limited Report prints available for a list of key users.

Integration & Trade Journal (I&T) Published on a six-month basis in Spanish and English, *I&T* features articles on different and complex aspects of regional integration in Latin America and the Caribbean, hemispheric integration as well as similar processes in other parts of the world. Important publishing changes—its own website—were made as from the N°29 issue,²¹ January-June 2009, following the same guiding principles over the last 33 years, first as *Latin American Integration*, and since 1996, as *I&C*. The new electronic format continues focusing on economic aspects of integration and further develops



integration-related topics. *I&T* is mainly focused on essays so as to promote well-founded debate and aims at reaching a broader audience. *I&T* has its own site as from its N°29 issue



◆ **Monthly Newsletter (CM)** Published in Spanish, English and Portuguese, CM follows up on the current integration processes in Latin America and the Caribbean, matching institutional information with analysis. It also communicates publications and activities undertaken by IDB-INTAL, together with bibliographical summaries, and reports new documents included in the INTAL CDI (Documentation Center) database. During 2009, the CM published its 150-161²² issues and continued with the reforms started in 2008 aimed at preserving and increasing analytical content and arousing the readers' interests. In 2009,

CM made a survey to identify its reader segment and, most importantly, to know how much value the Newsletter adds to the public. It was confirmed that CM is a differentiating product, with no direct competitors, although there are several newsletters on similar topics in the market. One of CM's assets is the systematic follow up on the integration processes in all the countries of the region. In a reader survey CM was ranked "very good" (50.8%) or "good" (45.6%). In 2009 CM started publishing a six-monthly summary of the articles published.

²¹ www.iadb.org/intal/detalle_publicacion.asp?idioma_pub=esp&cid=234&pid=381&tid=4&idioma=ENG

²² www.iadb.org/intal/cartas.asp?tid=5&cid=234&idioma=ENG

◆ **Sub-regional Integration Report Series** These reports are meant to systematize and channel information about integration processes to the general public and government specialists, academia and the private sector. The intention is to keep a historical record of these processes, which may be useful for public discussion and decision making. So far INTAL has published reports on The Andean Community of Nations (CAN), the Caribbean Community (CARICOM), the Central American Common Market (MCCA) and the Southern Common Market (MERCOSUR). In 2009, INTAL published the MERCOSUR N°14 Report in Spanish, covering the second half of 2008 and the first half of 2009,²³ and MERCOSUR N°13 Report in English.²⁴ MERCOSUR N°14 analyzes how the bloc has managed to face the international financial crisis.



INTAL occasionally contributes to promoting papers and research work as well.



◆ INFORMATION AND DOCUMENTATION SERVICES

INTAL's team specializes in organizing and disseminating integration and trade information and knowledge. This work area is composed of the following:

- Outreach Tools
- Documentation Center
- Databases

■ Outreach Tools

INTAL website is the main tool to promote activities, publications and other products, such as the Documentation Center and the Databases.

It also covers IDB integration and trade news.

In 2009 the site was permanently updated, and since September website traffic indicators (Google Analytics) have been used in order to measure the traffic evolution, i.e., the number of visitors to the web.

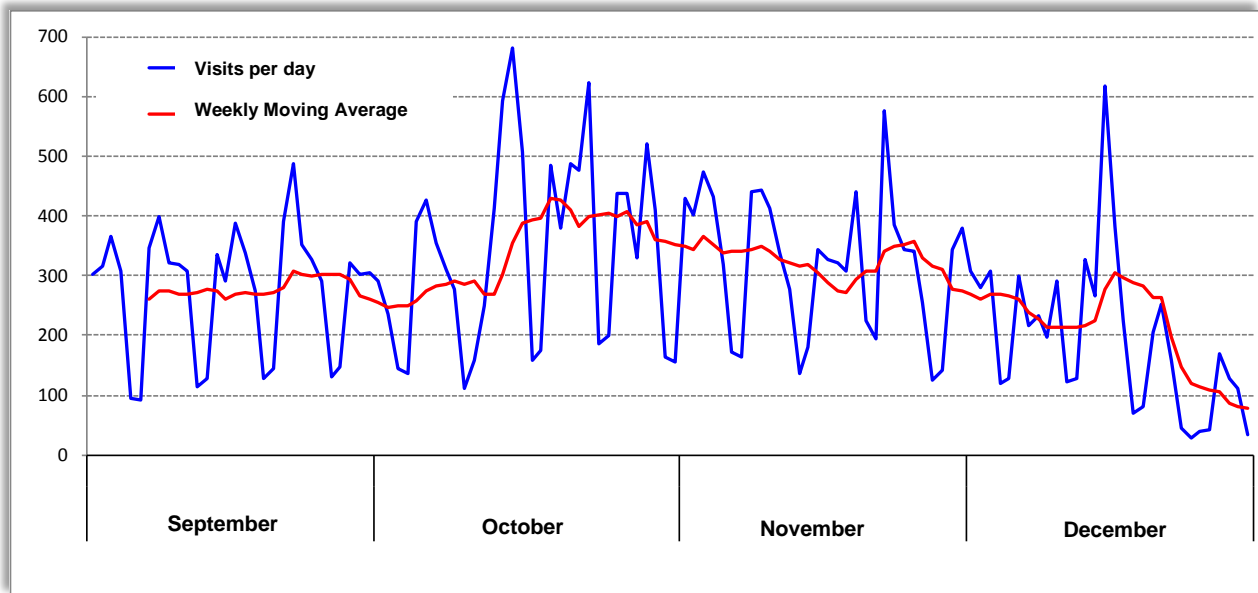


²³ www.iadb.org/intal/aplicaciones/uploads/publicaciones/e_Informe_MERCOSUR_14.pdf

²⁴ www.iadb.org/intal/aplicaciones/uploads/publicaciones/i_MERCOSUR_Report_13.pdf

These indicators are systematically used nowadays to weigh INTAL's communicational impact on the web. The following chart shows daily visits to the site over the last quarter of 2009: 285 visits/day on average.

Visits* per day September - December 2009



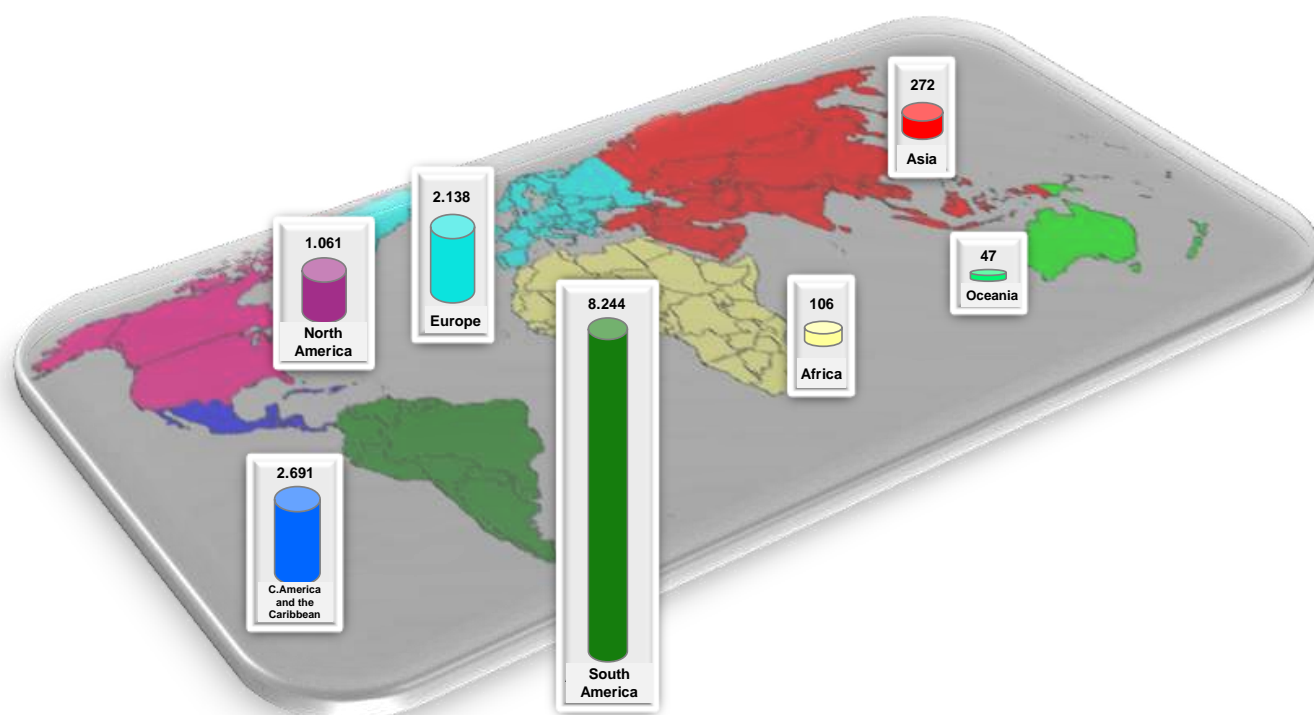
(*) A "visit" is defined as browsing the website (from any of its sub-sections) during one day irrespective of the number visits the user makes.

Source: INTAL, Google-Analytics

Due to multichannel interactions with users, INTAL was able to create a **contact base** that displays a general and specific user profile. It is made up of government officials, members of academia, researchers, representatives from civil organizations and private sectors, and the general public interested in integration and trade. Through the website, INTAL has the opportunity to offer a wide range of activities (courses, workshops, fora, conferences, etc.) as well as products (publications, Documentation Center, Databases, etc.) to those included in the base who receive related information on a regular basis. This contact base is key to the dissemination and information strategy of INTAL, as the Bank's platform for regional action.

From mid 2008 to the end of 2009, intensive work was done to debug and enlarge the contact base, to the tune of 14,559 users geographically distributed as follows:

INTAL – User Contact Base - December 2009



■ Documentation and Information Center (CDI)

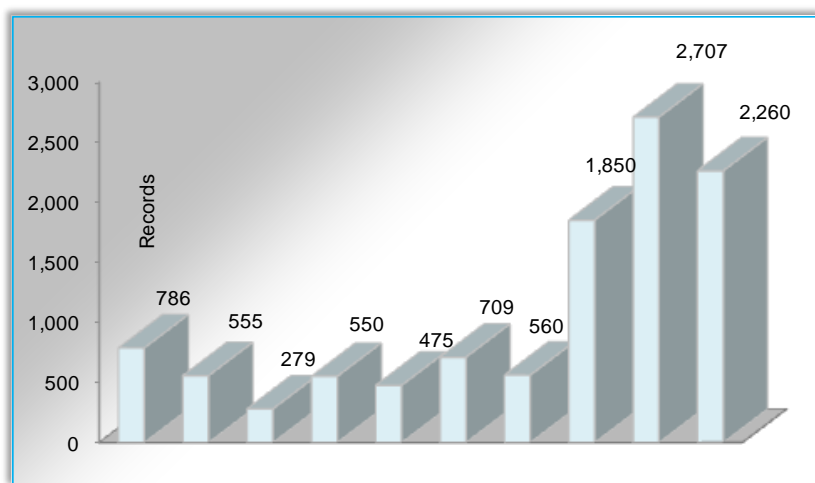


The **Documentation and Information Center (CDI)** identifies, collects, organizes and disseminates information on integration, trade, infrastructure as well as issues related to economic development, mainly from the Latin American and Caribbean point of view. Due to INTAL's history, the CDI has valuable material on these topics. In addition, it is permanently updated and keeps a record of the integration and trade material created by IDB and INTAL and by other organizations devoted to disseminating information and knowledge on these issues. During the last few years, the CDI has strived to increase the e-literature (full text) with open access to the public through the creation of a Digital Library fully oriented to integration and trade topics. The functional and organizational structure of the CDI is focused on (1) providing users with first-class information through ready and easy-to-use products and services; (2) selecting and processing information in compliance with quality standards; (3) developing information sources as well as retrieving and data access tools; and (4) gradually implementing a Digital Library model specialized in integration issues.

Online Catalog

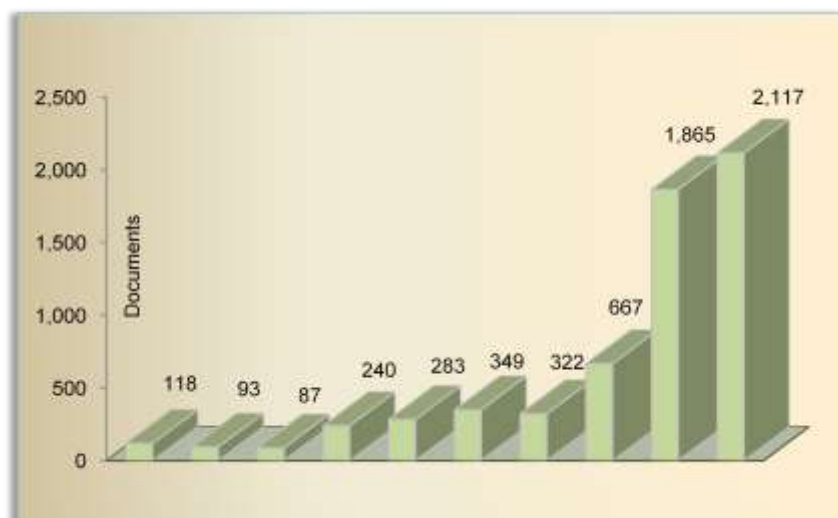
By the end of 2009, the total number of CDI **records**²⁵ was 18,110. Throughout the year, 2,260 records were incorporated—2,117 (93.7%) of which were electronic, accounting for a 14.25% increase in the total number of records as compared to 2008. Over the total of records in the Catalog, 9,939 (54.9%) may be accessed online in full version as of December 2009. It should be noted that in the last two years 3,982 electronic documents have been entered. The CDI has become a regional benchmark in terms of integration bibliography and seeks to gain the status of **Digital Library**.

Documents Entered into the CDI Database



In 2009, the **Thesaurus** terminology—developed in 2008 to facilitate search by topic—was expanded to 1,090 terms. Changes were also made to facilitate the query process.

Online and Full Version Documents in the CDI Online Catalog



As from 2009, the new items in the Catalog, called **Recent Acquisitions**, feature new search and result capabilities.

²⁵ In a database, a "record" is a physical unit whereas a "document" is a logical unit if, for example, the individual chapters are recorded separately when entering a book.

In 2009, a new **search engine** was developed for CDI journals, newsletters and papers on integration and similar topics called **Open-Access, Full-Text Electronic Publications**. The search is made by *Title*, *Topic* or *Author* and gives access to 279 titles, 248 (88%) of which are in full text.

Useful Links. In 2009, the CDI developed a new service that compiles, classifies and concentrates **websites** on integration, trade and related topics to facilitate the work of specialized researchers. Links can be searched by *Name of Institution*, *Topic* or *Geography*. The total number of links by late 2009 was 268.



The **digitalization** of the Institute's bibliography produced before 1996, known as **INTAL Classic Publications**, has been a major service rendered to CDI clients and includes the series *Integración Latinoamericana* (Latin American Integration), *Derecho de la Integración* (Integration Law), *Revista de la Integración* (Integration Review) and *Publicaciones del INTAL* (INTAL Publications). These publications amount to 418 titles (some 550 volumes). By late 2009, the CDI had already digitalized the first three series. Since last year, the *Publicaciones INTAL* digitalization process has covered 38 titles (about 50 issues), whose bibliographical and topical description has been entered in a database to facilitate search by author, title and topic.



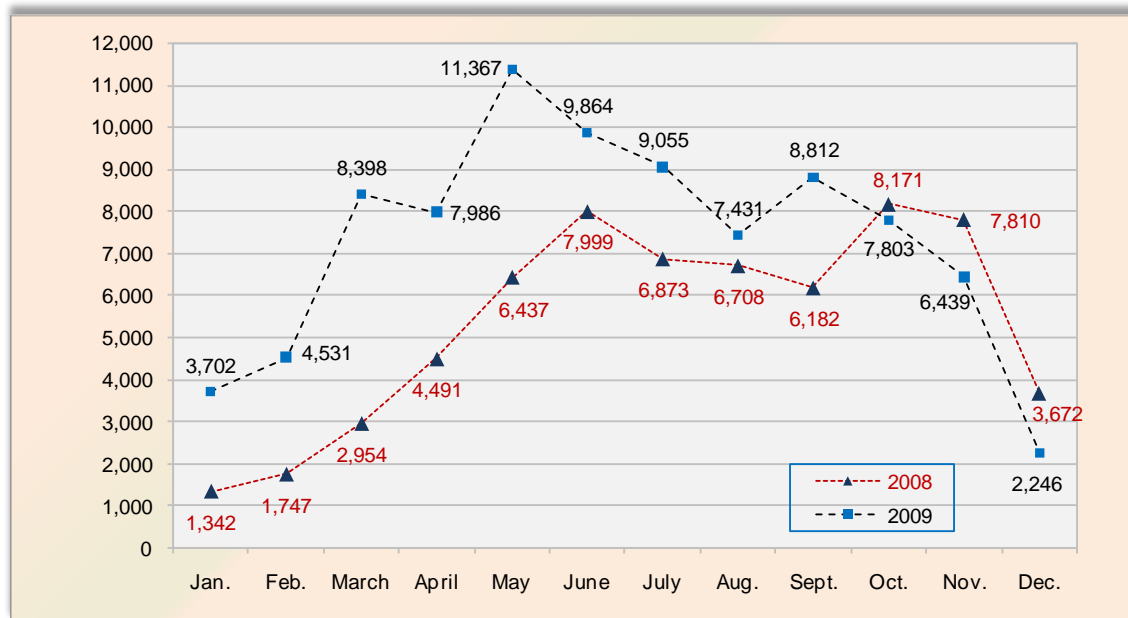
A new version of the **CDI website** was developed and has been available since March 2009. It includes new products and services, an enhanced search engine as well as additional information on CDI projects. From September 1 to December 31, 2009, the CDI site reported an average of 76 visits per day.

Open-Access Repositories CDI's outreach activities are aimed at helping INTAL's work gain visibility through the Internet. To this end, the focus has been put on web-based services, such as search engines, and open access repositories and directories: Google-Books, Research Papers in Economics (RepEc), DOAJ, UNIREC and Periodic Publications Sponsorship Project.

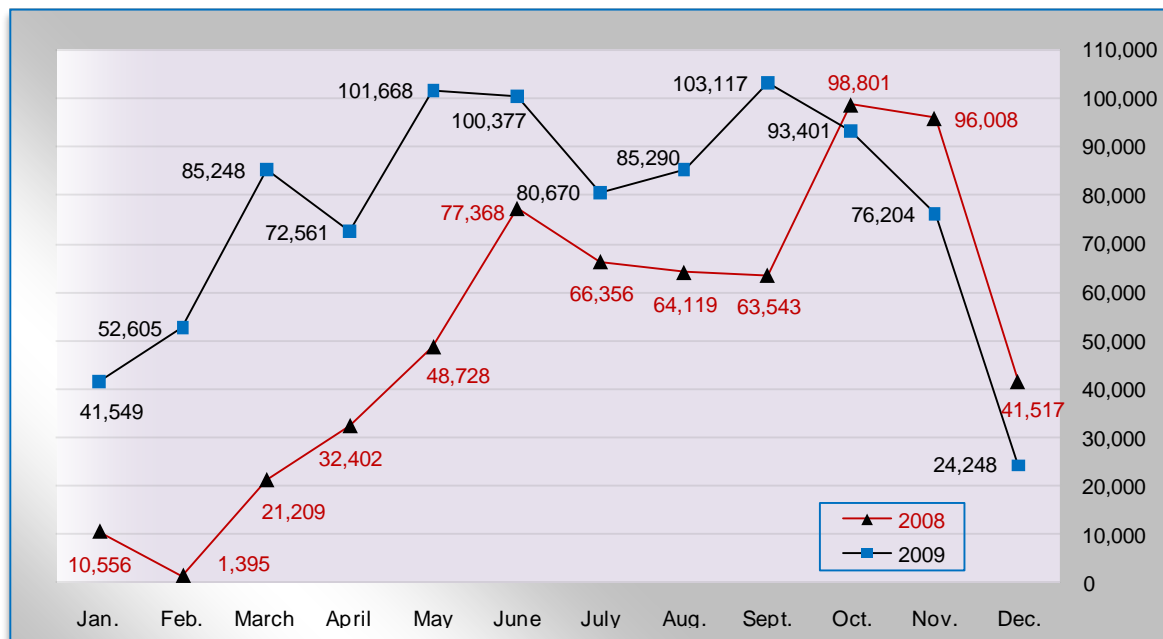
As for **Google-Books**, in 2009 a total of 87,634 visits were made to the 217 documents made available to users by INTAL through this service, accounting for an average of 7.302 visits per month and a 36.1% growth as compared to 2008 figures. This means 916.974 pages read, printed or downloaded; i.e. an average of 76.414 pages per month and a 47.4% increase vis-à-vis 2008.

Between September and December 2009, the CDI updated **RepEc**—a major repository on economics—to give higher visibility to INTAL publications. By the end of the year, INTAL had a total of 67 documents in the repository. Annually, the number of abstracts viewed rose to 854, 18% higher than 2008, whereas the total number of documents downloaded grew to 157, i.e. 23.6% more than 2008. Most of this growth occurred in the last quarter of the year.

INTAL Publications in Google Books – Number of visits in 2008-2009



Google Books – Page views (printed, read or saved) during 2008-2009 period



....

■ Databases

In 2009, the IDB, through the Integration and Trade Sector, developed InTRADE, an information hub on integration and trade. INTAL has created and maintained two highly specialized databases that have now been added to InTRADE. The first one contains basic legal instruments on regional integration; the second one, regional trade statistics (DATAINTAL).

Basic Instruments of Economic Integration in Latin America and the Caribbean

Since 1992, INTAL has been publishing organized basic juridical texts relevant to regional economic integration in Latin American and the Caribbean. In 1998, an updated version was uploaded to the Internet, which has been updated on a continuing basis, a remarkable achievement considering the constant activity by the countries of the region on account of the number of agreements entered into or renewed since then. In 2009, the routine quarterly update of the database was done.



DATAINTAL By mid 2009, INTAL had posted a new version of the Latin American and Caribbean foreign trade statistics system on the Internet in order to provide free and open access to the information. The initial posting contained data from 1992 to 2007. By December 2009, DATAINTAL had already been updated to include 2008 data. In 2010, the 2009 and 2010 quarterly data will be incorporated to facilitate data availability, which will result in a greater specific use of the series. New

functionalities will be added, such as quarterly trade series, Most Favored Nation (MFN) tariffs, various trade classifications (SITC, ISIC, UNCTAD), transport and freight information, and queries by integration bloc and trade agreement.



ACRONYMS AND ABBREVIATIONS

ADB	Asian Development Bank
ALADI	Latin American Integration Association
APEC	Asia-Pacific Economic Cooperation
CAF	Andean Development Corporation
CARICOM	The Caribbean Community
CEBRI	Brazilian Center for International Relations
CEF	Center for Financial Stability
CEI	Centre for International Economy
CINDES	Center for Integration and Development Studies
COSUDE	Swiss Agency for Development and Cooperation
CRNM	Caribbean Regional Negotiating Machinery
ELSNIT	Euro-Latin Study Network on Integration and Trade
FONPLATA	Financial Fund for the Development of the River Plate Basin
IDEA	Institute for Entrepreneurial Development in Argentina
IICA	Inter-American Institute for Cooperation on Agriculture
IIRSA	Initiative for the Integration of Regional Infrastructure in South America
INDES	IDB – Inter-American Institute for Economic and Social Development
LAEBA	Latin America/Caribbean and Asia/Pacific Economics and Business Association
MERCOSUR	Southern Common Market
OMC	World Trade Organization
ORP/EUR	IDB – Office in Europe
OVE	IDB – The Office of Evaluation and Oversight
REDEALAP	Latin American and Caribbean Studies Network on Asia-Pacific
REDINT	Integration Research Network
VPC	IDB – Office of the Vice President for Countries
VPC/INL	IDB – Institute for the Integration of Latin America and the Caribbean - INTAL
VPS	IDB – Office of the Vice President for Sectors and Knowledge
VPS/INT	IDB – Integration and Trade Sector



Inter American Development Bank
Vice Presidency for Countries
Institute for the Integration of Latin America
and the Caribbean – VPC/INL
Esmeralda 130 –11, 16 floors
Buenos Aires (C1035ABD) Argentina
Tel 54 11 4323 2350 – Fax 54 11 4323 2365
<http://www.iadb.org/intal>



www.iadb.org