



**Institute for the Integration of
Latin America and the Caribbean**

Activity Report INTAL

2008

March 2009

TABLE OF CONTENTS

INTAL – Institute for the Integration of Latin America and the Caribbean	3
2008 WORK PROGRAM	4
➤ Support to regional cooperation and programming	4
➤ Support to physical integration processes through infrastructure development and cooperation	4
* Initiative for the Integration of Regional Infrastructure in South America - IIRSA	4
➤ Training and capacity building in trade and integration	9
* IDB/WTO Program to Support Trade Negotiations	9
* Other integration-related training issues	11
➤ Support to the creation and dissemination of knowledge on trade and integration issues	13
* Support to research networks for sustaining policy reforms	13
* Seminars, workshops and outreach activities concerning integration issues	14
* Publications	16
* Information and Documentation Services	17
ACRONYMS AND ABBREVIATIONS	21



INTAL

Institute for the Integration of Latin America and the Caribbean¹

INTAL is a unit of the **IDB**. Since its beginnings in 1965, **INTAL** has supported the Bank's regional integration strategy. Throughout its history, it has been devoted to creating and disseminating knowledge on the advantages of integration processes. Since 2000, the Institute is also the Secretariat of IIRSA Technical Coordination Committee (CCT), thus contributing to physical integration initiatives in the region.

INTAL (VPC/INL) is part of the IDB Vice-Presidency for Countries and also coordinates activities with the Integration and Trade Sector within the Vice-Presidency for Sectors and Knowledge (VPS/INT).

INTAL's activities help meet the growing demand for capacity building on regional and multilateral integration and cooperation from governments as well as from the private sector, the civil society, the labor sector and academia.

In order to meet such goals, **INTAL's** work program focuses on the following areas: (i) Support for regional cooperation and programming; (ii) Support to physical integration processes through infrastructure development and cooperation; (iii) Training and capacity building in trade and integration issues; and (iv) Support to the creation and dissemination of knowledge on trade and integration issues.



Thus, INTAL's mission preserves its identity through the principles that gave birth to it: to actively assist the governments of IDB's Member Countries as a platform for the regional action of the Bank.

¹ <http://www.iadb.org/intal/index.asp?idioma=ENG>

2008 WORK PROGRAM

In 2008, the Institute conducted the following activities:

➤ Support to regional cooperation and programming

Regional programming is an analytical exercise carried out by the Bank in order to identify priorities and design activities and projects aimed at providing support to the integration process. This regional programming exercise, led by VPC with the technical support of VPS/INT, demands calling for the participation of many actors: governments, subregional entities, and civil society, among others. In addition, the actual integration of the various subregions involves a wide range of issues, where trade is only one of them. The purpose of this component is to support programming exercises and technical cooperation through the activities in which INTAL has experience.

CENTRAL AMERICA

The design of a regional strategy for Central America, Mexico, Belize, Panama and the Dominican Republic was initiated in 2008, under the coordination of VPC/CID and VPS/INT and with the contribution of many Bank units, among which INTAL can be mentioned.

After an internal consultation at the Bank, a discussion workshop with experts from the subregion and the participation of INTAL was organized in December to make further progress in identifying a few priority issues deemed strategic and to which the IDB could make a significant contribution through regional interventions.



➤ Support to physical integration processes through infrastructure development and cooperation

INITIATIVE FOR THE INTEGRATION OF REGIONAL INFRASTRUCTURE IN SOUTH AMERICA²



IIRSA seeks to promote the development of transport, energy and communications infrastructure from a regional viewpoint, aimed at the physical integration of the twelve South American countries and the achievement of an equitable and sustainable territorial development pattern. IIRSA was adopted at a Meeting of South American Presidents held in the city of Brasilia in August 2000, at which the region's leaders agreed to take joint actions to promote South American political, social and economic integration that includes the streamlining of regional infrastructure and specific measures to foster the integration and development of isolated subregions.

² <http://www.iirsa.org/>

IIRSA CCT Secretariat

In operational terms, IIRSA is an inter-governmental cooperation mechanism for the development of physical integration in South America.

This Initiative is presided over by the Presidency Pro-Tempore taken over on a rotating basis by its Member Countries: in 2008 it was taken over by Colombia and in 2009, by Argentina.

The process is supported by the Technical Coordination Committee (CCT) made up of the three multilateral financial institutions in the region: the IDB, the Andean Development Corporation (CAF), and the Financial Fund for the Development of the River Plate Basin (FONPLATA).

The CCT Secretariat is permanently based at INTAL offices, from where the work of the three agencies and the Initiative's annual action plan are coordinated.

I. The work undertaken by IIRSA focuses on four strategic courses of action: Project Implementation; Territorial Planning; Integration Sectoral Processes, and Outreach Activities. In 2008, the main tasks performed involved the following activities:

- *Project Implementation* – (1) Review of IIRSA project portfolio, which led to a portfolio made up of 514 projects distributed in 47 Groups with an estimated total investment of US\$69,000 million; almost 70% of this portfolio is well advanced in its execution, with 10% of the projects already concluded (US\$7,506 million), 38% underway (US\$30,728 million), and 20% in the preparation stage (US\$17,383 million). Particularly worth mentioning is a series of projects identified by the countries as the Implementation Agenda Based on Consensus 2005-2010 (AIC); and (2) the use of SIGE (Strategic Management Information System) for the 31 projects in the AIC, of which 19 are underway, 10 are being prepared, and 2 have been concluded, with an estimated total investment of US\$10,190 million.
- *Territorial Planning* – (1) The development of strategic environmental training and evaluation tools; (2) the analysis of logistics aspects and production chains, as well as the economic evaluation of transnational projects; (3) Launching of the GeoSUR Program's Regional Map Service for public access; and (4) the *Course on Infrastructure, Integration and Development*,³ held in Santiago de Chile and organized by the CCT —through its Secretariat— and ECLAC, with the main purpose of standardizing knowledge and providing the officials involved with a political economy perspective of the problems derived from the development of integration infrastructure. More details on this course are given below.
- *Integration Sectoral Processes* – (1) The process intended to design financing instruments (funds for project preparation); (2) facilitation of Border Passes (studies); (3) significant progress of two projects in the area of Information and Communication Technologies (ICT): (i) Exports through Postal Services for SMEs, and (ii) South American Roaming Agreement (a regional study and a first GTE meeting); and (4) the Inter-Governmental Cooperation process (Workshop on Successful Cases).

³ www.iirsa.org/cursoiirsa08.asp

- **Outreach Activities** – (1) The Project Database, in relation with both the training of National Coordinators (from Colombia, Chile, Ecuador and Peru) and the updating of the information about the 514 projects; (2) the permanent update of IIRSA website and the new home page design; (3) the First Leadership Forum for South-American Integration; (4) two new documentary videos on Pasto-Mocoa-Puerto Asís Highway and Chile-Bolivia Interoceanic Corridor leg,⁴ to add to the five videos already prepared on the 31 AIC projects.

Throughout 2008, the CCT Secretariat has actively supported IIRSA's work and, in this context, organized a total of 12 meetings—in addition to the *Course on Infrastructure, Integration and Development* already mentioned— whose agendas focused on various technical aspects, portfolio review and update and IIRSA's coordination activities. Eight of these meetings were attended by the twelve countries that make up the Initiative:

MARCH		
11	Washington, U.S.A.	First Workshop on IIRSA Roaming Project
MAY		
6	Paramaribo, Suriname	Meeting of the GTE of the Guianese Shield Hub
JUNE		
3		Meeting of the GTE of Paraguay-Paraná Waterway Hub
4	Asuncion, Paraguay	Meeting of the GTE of the MERCOSUR-Chile Hub
5		Meeting of the GTE of the Capricorn Hub
24 to 26	Buenos Aires, Argentina	XII Meeting of National Coordinators
AUGUST		
20 to 21	Lima, Peru	Workshop on GEOSUR
OCTOBER		
6 to 10	Santiago, Chile	ECLAC-IIRSA Course
NOVEMBER		
4		Workshop on Successful Cases
5 and 6	Bogotá, Colombia	XIII Meeting of National Coordinators
7		Meeting of GTE on South American Roaming
DECEMBER		
1 and 2	Cartagena, Colombia	Project Road Show IIRSA
3 and 4		X Meeting of the Executive Steering Committee

II. Moreover, INTAL conducted the following activities concerning the IIRSA Initiative:

- **Training in EASE Methodology** – This is a program implemented by INTAL through five regional three-day training workshops focused on the following learning activities: i) lectures on conceptual topics; ii) team work analysis of conceptual and practical aspects; and iii) application to concrete cases. These workshops were held as per the following schedule:

⁴ http://www.iirsa.org/BancoConocimiento/V/videos/videos_ENG.asp?CodIdioma=ENG

Date	Venue	Targeted for experts from:
16 to 18 April	Lima, Peru	Bolivia, Chile and Peru
22 to 24 April	Quito, Ecuador	Colombia, Ecuador and Venezuela
13 to 15 May	Buenos Aires, Argentina	Argentina, Paraguay and Uruguay
27 to 29 May	Brasilia, Brazil	Brazil
5 to 7 August	Paramaribo, Suriname	Guyana and Suriname

The EASE (Strategic Environmental and Social Evaluation) Methodology⁵ is aimed at contributing to the sustainable planning of infrastructure by applying a sound tool that, based on the area of influence of IIRSA's project groups, may help identify, with a preventive approach, all the complementary actions required to tap, from a socio-environmental and cultural viewpoint, the positive effects of the projects while minimizing their negative impact.

- Training in and application of Production Integration and Logistics Methodology⁶ – This program, also executed by INTAL,⁷ seeks to train experts from the Initiative's Member Countries in the use of this methodology based on the experiences gathered, so that the material developed for this activity as well as its outcomes can be disseminated and published.

Date	Venue	Workshop
10 to 12 December	Lima, Peru	Launching of Application/Training - Group 5 Connections to the Pacific Ocean
18 to 20 November	Foz de Iguazu, Brazil	Binational Training/Application Workshop– Group Asuncion-Paranagua
15 to 17 September	Brasilia, Brazil	Launching of Application/Training Methodology in Brazil
25 to 27 August	Asuncion, Paraguay	Launching of Application/Training Methodology in Paraguay

- INTAL also published issue 28 of *Integration & Trade Journal*⁸ fully devoted to physical integration. The articles contained therein are:

- Issues and Options on Transnational Projects

Paulina Beato

- Infrastructure Integration and Incomplete Contracts: Natural Gas in the Southern Cone

Fernando H. Navajas

- Cooperation and Provision of Regional Public Goods: The IIRSA Case

Ricardo Carciofi

⁵ http://www.iirsa.org/BancoConocimiento/E/evaluacion_ambiental_estrategica/evaluacion_ambiental_estrategica_ENG.asp?CodIdioma=ENG

⁶ http://www.iirsa.org/BancoConocimiento/C/consolidacion_metodologias/consolidacion_metodologias_ENG.asp?CodIdioma=ENG

⁷ http://www.iadb.org/intal/detalle_carta.asp?tid=5&idioma=ENG&carta_id=810&cid=234

⁸ http://www.iadb.org/intal/detalle_publicacion.asp?idioma_pub=esp&cid=234&pid=378&tid=4&idioma=ENG

- Investing in Multinational Transport Infrastructure: Coordination Perspectives for Latin America
Rodrigo Cárcamo-Díaz and John Gabriel Goddard
- Trade Costs and the Economic Fundamentals of the Initiative for the Integration of Regional Infrastructure in South America (IIRSA)
Mauricio Mesquita Moreira
- Some Elements to Characterize Brazilian Interests in Infrastructure Integration in South America
Roberto M. Iglesias
- The Infrastructure Integration in South America: The Case of Chile
Georgina Cipoletta Tomassian
- Political Economy, Infrastructure and Integration: The Peruvian Case
Gustavo Guerra-García Picasso
- Trade Costs and Infrastructure: Analysis of the Effects of Trade Impediments in Asia
Prabir De
- Impact of Cross-Border Road Infrastructure on Trade and Investment in the Greater Mekong Subregion
Christopher Edmonds and Manabu Fujimura
- The Macroeconomic Effects of Infrastructure Financing: A Tale of Two Countries
Douglas H. Brooks and Fan Zhai

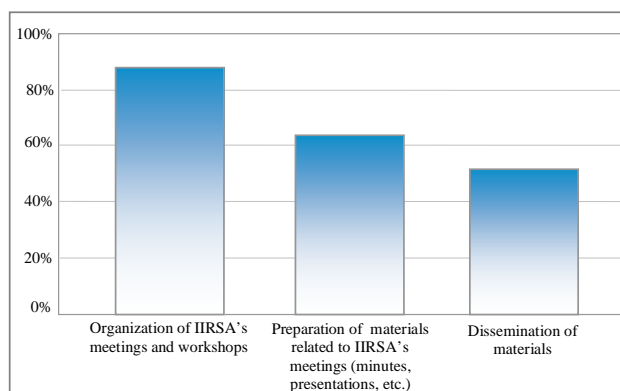


Report by the IDB's Office of Evaluation and Oversight (OVE)⁹

It should be pointed out that INTAL as the permanent headquarter for IIRSA's CCT Secretariat has been praised in the evaluation made by the OVE regarding the activities of the IDB in the Initiative, earning very satisfactory ratings for its work: "...

In turn, INTAL's performance as IIRSA Secretariat was termed highly satisfactory when it came to meeting and workshop organization and development of technical reports and materials..."

Figure 3.3 A very satisfactory rating of INTAL as IIRSA's Secretariat



Source: Survey by the Office of Evaluation and Oversight.



⁹ RE-338 *Evaluation of IDB Action in the Initiative for Integration of Regional Infrastructure in South America (IIRSA)*, April 2008, page 20: <http://www.iadb.org/ove/Documents/uploads/cache/1524534.pdf>

➤ Training and Capacity Building in Trade and Integration

The objective of INTAL training programs is to strengthen the negotiating capacity and the implementation of trade agreements of the Latin American and Caribbean government officials. The programs are also targeted to the academic community and different sectors of civil society.



IDB/WTO PROGRAM TO SUPPORT TRADE NEGOTIATIONS

INTAL continued cooperating with the WTO Secretariat, having thus completed its eleventh year of joint work. In 2008, these activities have been taking place within the framework of the IDB/INTAL-WTO Training Program for Trade Negotiators from Latin America and the Caribbean.



Courses and workshops are given by experts from WTO and IDB. The topics dealt with are closely related to the dynamics of the trade negotiating process, paying special attention to the Doha Agenda issues and their significant impact for the countries in the region.

Within the framework of this program, courses and workshops are also organized for academia and different sectors of civil society.

Throughout 2008, 14 courses and workshops were held in 9 countries and were attended by about 500 government officials from 33 countries in Latin America and the Caribbean. The list below shows the courses conducted in the period considered in this report:

IDB/WTO Program – Courses in 2008

Event	Organizers	Date	Place
Advanced Regional Workshop on Domestic Services Regulation and Scheduling Issues for Caribbean Countries	IDB-INTAL, WTO and CRNM	30 January to 2 February	Bridgetown, Barbados
Regional Workshop on Trade and Environment for Caribbean Countries	IDB-INTAL, WTO and CRNM	4 to 6 February	Bridgetown, Barbados
Regional Workshop on WTO and Doha Negotiations for South American Parliament members	IDB-INTAL, WTO and Government of Spain	1 to 3 April	Montevideo, Uruguay
Regional Seminar on WTO Agreement on the Application of Sanitary and Phytosanitary Measures for Southern Cone Countries	IDB-INTAL, WTO, IICA, OIE, IPPC and Codex	22 to 24 April	Asunción, Paraguay
Course-Workshop on NAMA for Latin American countries	IDB-INTAL, WTO and Government of Spain	12 to 15 May	Quito, Ecuador
Workshop on NAMA for Caribbean Countries	IDB-INTAL and WTO	11 to 13 June	Kingston, Jamaica
Regional Course on WTO and Regional Trade Agreements for Latin American countries	IDB-INTAL, WTO and Government of Spain	30 June to 2 July	Buenos Aires, Argentina
Regional Workshop on Government Procurement for Caribbean Countries	IDB-INTAL, WTO and CARICOM	8 al 10 July	Kingston, Jamaica
Workshop on Agriculture for Latin American countries	IDB-INTAL, WTO and Government of Spain	5 and 6 August	San Jose, Costa Rica
Seminar on Trade and Development for Latin American countries	IDB-INTAL, WTO and Government of Spain	11 al 15 August	Buenos Aires, Argentina
VIII Short Trade Policy Course for ALADI countries	IDB-INTAL, WTO, ALADI, IICA and Government of Spain	29 September to 10 October	Montevideo, Uruguay
Regional Workshop for Latin American countries on WTO Trade Facilitation Negotiations	IDB-INTAL, WTO and Government of Spain	14 and 15 October	Santiago, Chile
Regional Seminar on Intellectual Property for Latin American countries	IDB-INTAL, WTO and Government of Spain	18 to 20 November	Panama, Panama
Regional Workshop on Trade and Environment for Latin American countries	IDB-INTAL, WTO and Government of Spain	2 to 4 December	Buenos Aires, Argentina



OTHER INTEGRATION-RELATED TRAINING ISSUES

INTAL also conducts training activities concerning other regional and hemispheric negotiation spheres in order to meet more specific capacity-building demands and needs, with the purpose of promoting the participation of civil society representatives from the labor and private sectors, academia and NGOs in courses especially designed to meet the needs of these groups.

Seminar on Customs Unions

Organized by INTAL, the seminar focused on the essentials of technical and practical problems typical of the customs unions in Central America and the European Union and, to a lesser degree, in MERCOSUR, and it dealt with their experiences, difficulties, lessons as well as the best practices resulting from such processes.

Course on Infrastructure, Integration and Development

Organized by IIRSA's CCT Secretariat, as already mentioned, this course took place in Santiago de Chile at ECLAC headquarters. INTAL participated actively in the conceptual development of the course as well as in its academic coordination, while contributing with funds as well.



MERCOSUR Module for Diplomacy Academies' Students

There were other training activities conducted by related institutions that were supported by INTAL in terms of their conceptual design and operational implementation, the provision of logistics tools and/or their total or partial financing.

For instance, it participated in the initiative launched by IMEF (MERCOSUR Training Institute) by financing participants of the Module designed to provide knowledge on the MERCOSUR integration process, its common policies, institutional structure and regulations in force, economic and trade policy instruments in order that this theoretical information and practical tools be applied to a shared approach to integration.

IDB-INTAL/Andean Community Internship Program

The purpose of this Program is to provide training to the public sector of the Andean countries concerning the institutional and legal framework of the subregional integration process.

Internships are targeted for officials from the ministries of Foreign Trade, Economy and Finance, and Planning, and for Central Banks' representatives, as well as for researchers and young professionals who may become decision-makers in the fields of foreign trade, macroeconomic and monetary policies in their countries of origin.

After having successfully completed 17 periods of 4 months each, the last stage of the Program concluded in December 2008. With a total of 158 officials trained throughout 9 years, the Program was subject to a final general evaluation by an external consultant.

Other Training Courses - 2008 -

Event	Organizers	Date	Place
MERCOSUR Module for Diplomacy Academies' Students	Commission of Permanent Representatives of MERCOSUR sponsored by IDB-INTAL	26 to 30 May	Montevideo, Uruguay
Seminar on Customs Unions: Practical Experiences in Central America, the European Union and other Integration Schemes in Latin America	IDB-INTAL and School of Diplomacy Eduardo Latorre – Foreign Relations Secretariat	3 and 4 September	Sto. Domingo, Dominican Republic
Course on Infrastructure, Integration and Development	IIRSA's Technical Coordination Committee (CCT) and ECLAC	6 to 10 October	Santiago, Chile



- Support to the creation and dissemination of knowledge on trade and integration issues



SUPPORT TO RESEARCH NETWORKS FOR SUSTAINING POLICY REFORMS

Supplementing the task performed and led by VPS/INT regarding research networks, INTAL supports the strengthening of the capacity for research in areas related to integration in Latin America and the Caribbean, considering their relationship with other regions as well.

Latin America/Caribbean and Asia/Pacific Economics and Business Association



The IDB and the Asian Development Bank (ADB), through the ADB Institute, have undertaken a joint initiative to promote and launch LAEBA in order to strengthen the links between Latin America and the Caribbean and Asia/Pacific in response to a growing need in both regions for the development of an interregional mechanism to link academic research, policymakers and the private sector.

INTAL organized LAEBA IV Annual Meeting in June in Lima, Peru. The 2008 edition of this meeting was called *“Infrastructure for Trade and Integration: Challenges for Latin America and Asia”*¹⁰ jointly with Universidad del Pacífico (UP) and in cooperation with APEC/ASCC.

REDEALAP – Latin American and the Caribbean Studies Network on Asia-Pacific

INTAL gives support to the activities of the Latin American and the Caribbean Studies Network on Asia-Pacific (REDEALAP) as part of a strategy to improve relations between its member countries and the Asian region. The Network is made up of experts and institutions from Latin American and the Caribbean region and its objective is to conduct research and dissemination activities on the relations with the Asian region, with a view to contributing to the formulation and implementation of public and private strategies and policies. In this context, INTAL prepared together with the Network Committee a call for papers to be presented at the VIII Meeting of REDEALAP¹¹ in Bogota, Colombia, in August, which was organized by the Institute jointly with Universidad Externado, from Colombia.



Euro-Latin Study Network on Integration and Trade

The IDB, through its Special Office in Europe (ORP-EUR), the Integration and Trade Sector (VPS/INT)– and INTAL, launched the Euro-Latin Study Network on Integration and Trade (ELSNIT). This initiative has created in Europe a forum on regional integration and trade issues relevant to Latin America and the Caribbean with the main objective of fostering research, studies and debate drawing on the rich European experience and perspectives, increasing interaction between European and Latin American researchers.

¹⁰ http://www.iadb.org/intal/detalle_articulo.asp?idioma=ENG&aid=321&cid=258&nivel=

¹¹ http://www.iadb.org/intal/detalle_articulo.asp?idioma=ENG&aid=449&cid=386&nivel=

In 2008, the ELSNIT Committee included the following institutions: Centro de Investigación en Economía Internacional (CREI), Barcelona, Spain; the *Centre d'Études Prospectives et d'Informations Internationales* (CEPII), Paris, France; the *Institute for World Economics* (IfW), Kiel, Germany; the *Robert Schuman Centre for Advanced Studies* (RSCAS), Florence, Italy; and the IDB, represented by VPS/INT and INTAL (VPS/INL). INTAL followed up the call for papers for the *VI Meeting of ELSNIT*¹² that took place in Florence, Italy, co-organized with EUI, in addition to contributing with the financing of Latin American participants.

Network Meetings - 2008 -		
Event	Date	Place
LAEBA IV Annual Meeting	17 June	Lima, Peru
VIII Meeting of the Latin American and the Caribbean Studies Network on Asia-Pacific (REDEALAP)	27 and 28 August	Bogotá, Colombia
Sixth Annual Conference of the Euro-Latin Study Network on Integration and Trade (ELSNIT)	24 and 25 October	Florence, Italy



SEMINARS, WORKSHOPS AND OTHER OUTREACH ACTIVITIES CONCERNING INTEGRATION ISSUES



These events include activities for addressing, disseminating and transmitting topics related to integration and trade, with the participation of representatives from business, academia, and the labor sector, aiming at contributing to the strengthening of knowledge on present and future events in this area.

In 2008, INTAL organized two seminars:¹³ the first one was devoted to the development of new exporting sectors in Latin America, during which case studies on innovative export sectors in Argentina, Chile, Brazil, Mexico and Uruguay were analyzed, identifying and evaluating initial conditions and milestones in their development as well as the role of the public and private sectors in opening and expanding new opportunities; the second one focused on trade and transportation costs in Latin America and the Caribbean, particularly in Argentina. This meeting was intended to disseminate the report entitled *Unclogging the Arteries. The Impact of Transportation Costs on Latin American and Caribbean Trade*, prepared by VPS/INT and co-published by the David Rockefeller Center, Harvard University.

¹² http://www.iadb.org/intal/detalle_articulo.asp?idioma=ENG&aid=322&cid=259&nivel=

¹³ http://www.iadb.org/intal/calendario_articulo.asp?cid=421&tid=421

Seminars and Workshops - 2008			
Event	Organizers	Date	Venue
The development of new exporting sectors in Latin America	IDB-INTAL and CIPPEC	16 September	Auditorio Raúl Prebisch, Buenos Aires, Argentina
Trade and transportation costs in Latin America and the Caribbean	IDB-INTAL	3 October	Auditorio Raúl Prebisch, Buenos Aires, Argentina

INTAL supported other activities by providing assistance for their organization and/or by sponsoring them:

Activities sponsored by INTAL - 2008			
Event	Organizers	Date	Place
Latin-American Regional Rounds – International Trade Arbitration Competence	COLADIC-RD, ELSA International	10 to 14 March	Santo Domingo, Dominican Republic
Meeting on the integration of industrial property into economic and social development policies in South American countries	IDB - VPS/INT and VPC/INL	7 and 8 August	Auditorio Raúl Prebisch, Buenos Aires, Argentina
Workshop: Millennium Development Goals. Towards a regional approach to the MDG follow-up. Second meeting between Government teams /MERCOSUR UNDP	National Council of Social Policy Coordination and UNDP	1 and 2 October	Auditorio Raúl Prebisch, Buenos Aires, Argentina
Seminar on the Consultative Forum of Municipalities, States, Provinces and Departments of MERCOSUR	CARI, CEBRI	19 and 20 November	CARI, Buenos Aires, Argentina

In addition, in 2008 INTAL was invited to participate in the following meetings:

Participation of INTAL in events organized by other institutions - 2008			
Event	Organizers	Date	Venue
Seminar "Infrastructure and Physical Integration in Latin America"	MERCOSUR Secretariat/ FOMERCO	20 August	MERCOSUR Secretariat, Montevideo, Uruguay
Infrastructure in the Amazon region. Inter-American Development Bank's meeting to guide future actions in the region	IDB and CEBRI	4 September	CEBRI, Rio de Janeiro, Brazil
XIII Annual Meeting of MERCOSUR SMEs Network and II Workshop "Toward a Regional System of Innovation in the MERCOSUR"	Escuela de Economía y Negocios, San Martín Univ.	25 September	Escuela de Economía y Negocios, San Martín Univ., Argentina
Meeting to present the Production Chain Methodology	IDB – VPS/INT	24 October	Auditorio Raúl Prebisch, Buenos Aires, Argentina
Regional Conference: Current Trends in Latin American Development and Sweden's Development Cooperation - Where do They Meet?	Swedish International Development Cooperation Agency - SIDA	1 to 3 December	Cartagena de Indias, Colombia



PUBLICATIONS

The Institute is responsible for three publications: the Monthly Newsletter, which is fully published on INTAL's website; the *Integration & Trade Journal*, printed on a six-month basis, and the Sub-regional Integration Reports Series, which disseminate information on integration processes taking place in Latin America and the Caribbean.

Monthly Newsletter: Published in three languages (English, Spanish and Portuguese), it covers salient regional information, particularly news on events and regulations concerning the evolution of integration processes in the different blocs. In 2008, issues 138 through 148¹⁴ were published and new sections were introduced: the Analysis Column, opening the newsletter with reflections on the month's topic of interest; the Regional and Global Overview, which describes regional processes and their interaction with similar processes in Asia and Europe, and a third section that details all new bibliographical references acquired throughout the month by the Documentation Center.



Integration & Trade Journal: Published in both English and Spanish, it includes articles dealing with different aspects of integration in Latin America and the Caribbean, with hemispheric integration as well as with similar processes in other parts of the world. Furthermore, it encompasses papers related to intra-regional trade and to trade of Latin American and the Caribbean countries with third countries and/or blocs. In 2008, issue N° 28, covering the first six months, was published in Spanish and was totally devoted to the development of integration infrastructure. During the second half of the year, the Journal underwent a restructuring process in order to redefine and broaden its content, scope and criteria, in line with the IDB realignment process and its new priorities. The project for 2009 is to publish the Journal only in electronic format.

Sub-regional Integration Reports Series: This series aims at fostering knowledge and disseminating information on the dynamic integration process in place in Latin America and the Caribbean. As part of this integration trend, the Andean Community of Nations (CAN), the Caribbean Community (CARICOM), the Central American Common Market (CACM) and the Southern Common Market (MERCOSUR) have become leading cases that enable analysts to assess the success and challenges of these ambitious initiatives. By publishing this series, INTAL's intent is to facilitate access to this information by potential

¹⁴ <http://www.iadb.org/intal/cartas.asp?tid=5&cid=234&idioma=ENG>



readers interested in the different sub-regional environments, encompassing the public and private sectors and the community at large.

In 2008, *MERCOSUR Report No 12* was published in English and Portuguese, covering the period between the second half of 2006 and the first half of 2007, while *MERCOSUR Report No 13*¹⁵ was published in Portuguese, covering the period from the second half of 2007 to the first half of 2008.

In 2008, a document entitled *Saber y política en América Latina. El uso del conocimiento en las negociaciones comerciales internacionales*¹⁶ was published under the coordination of Mercedes Botto, including articles by different authors on a common subject —the capacity and limitations of academic research to contribute to the design and implementation of trade policies and strategies for international integration.

INTAL contributed to publishing this book, thus helping disseminate the results of research works.



INFORMATION AND DOCUMENTATION SERVICES

Documentation and Information Center (CDI)



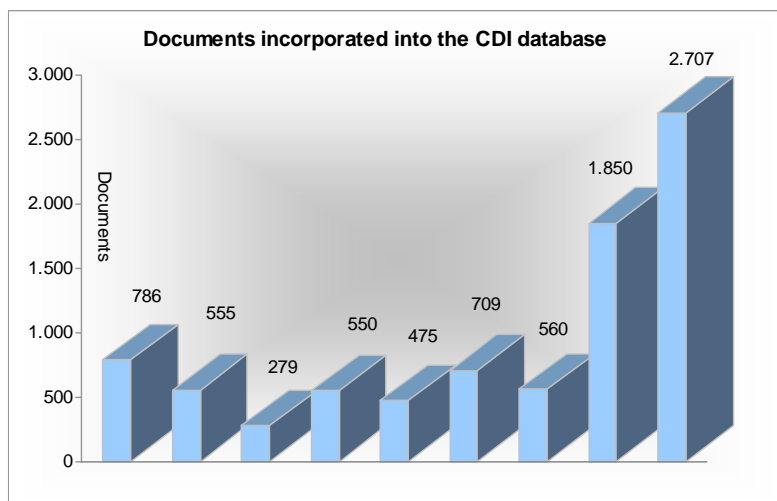
The CDI identifies, compiles, organizes and disseminates information on integration and trade in Latin America and the Caribbean. The collection covers historical aspects in addition to keeping the bibliography on regional blocs' integration updated.

In 2008, the functional and organizational structure of the CDI was redesigned in order to: **(1)** provide users with first-class information through ready and easy-to-use products and services; **(2)** select and process information meeting quality standards; **(3)** develop information sources as well as data access and retrieving tools, and **(4)** gradually implement a model for a Digital Library specialized in integration issues.

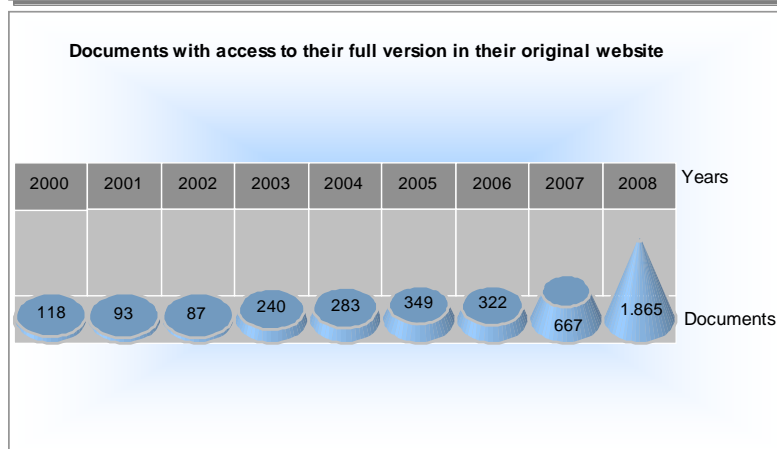
¹⁵ http://www.iadb.org/intal/detalle_subtipo.asp?tid=6&idioma=ENG&std=5&cid=234

¹⁶ http://www.iadb.org/intal/detalle_publicacion.asp?idioma_pub=ESP&cid=234&pid=379&tid=13&idioma=ENG

Concerning the **on-line Catalog**, 2,707 documents have been incorporated throughout 2008, 1,865 of which are available online. Of a total 16,500 documents in the catalog (as of December 2008), 7,637 (46.5%) may be accessed online in full version. Furthermore, the number of visits to Open-Access, Full-Text Electronic Publications has increased.



The IDB and INTAL online resources have been **compiled**. Thus, users can access all of them from a single website. In addition, the list of the bibliography on integration blocs and of recent acquisitions has been updated on an ongoing basis.



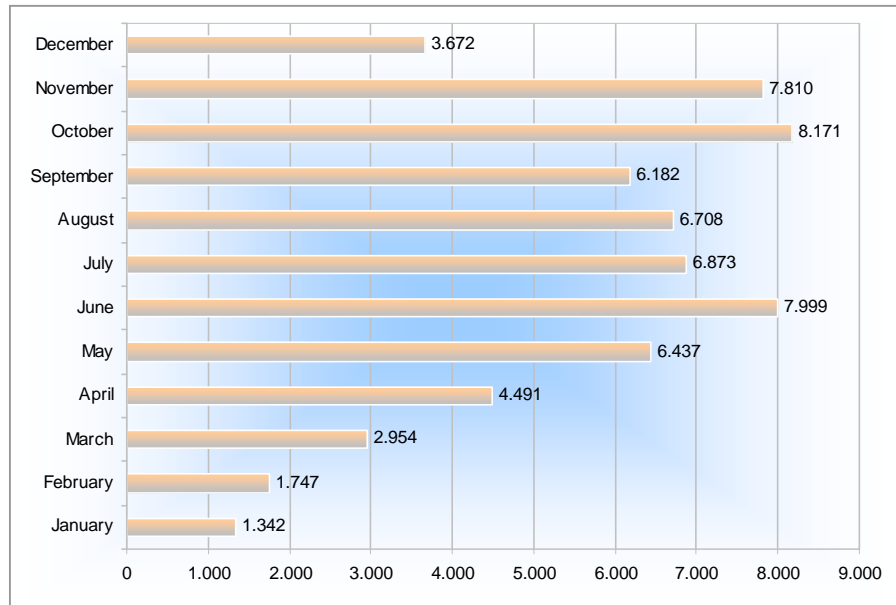
The CDI has developed a product known as **Thesaurus** to help users search by topic, browsing the different knowledge areas by selecting key word(s), which are hierarchically sorted and show their specificity to and relation between one another.

The **digitalization** of the Institute's bibliography produced before 1996, known as *INTAL Classic Publications*, has been a major service rendered to CDI clients.

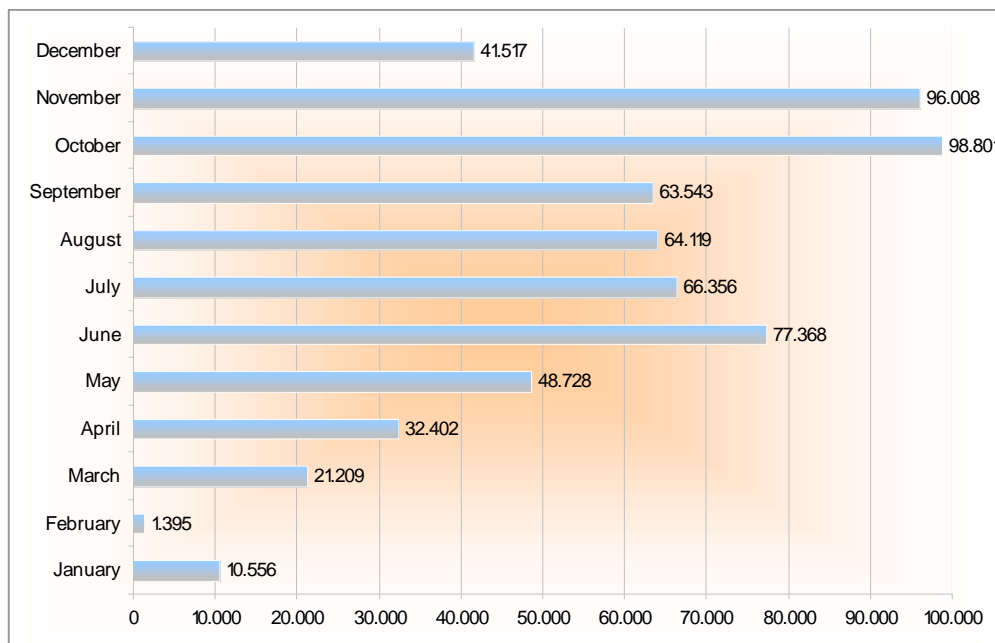
The series "*Integración latinoamericana*" (*Latin American Integration*), "*Derecho de la Integración*" (*Integration Law*) and "*Revista de la Integración*" (*Integration Review*) are available in full; a bibliographical and topical description of each publication as well as the information contained in each issue has been included in a database to facilitate search by author, title and topic.

A new version of the CDI **website** was developed and is scheduled for March 2009. New products and services will be included, the search engines will be improved, and additional information on CDI projects will be supplied.

CDI's outreach activities are aimed at helping INTAL's work gain visibility through the Internet. To this end, the focus has been put on web-based services, such as search engines, repositories, open access services and directories: Google-Books, RepEc, DOAJ, UNIRED and Periodic Publications Sponsorship Project. As for Google-Books, in 2008 a total of 64,386 visits were made to the 204 documents made available to users by INTAL through this service, accounting for an average of 5,365 visits per month. This means 622,002 pages read, printed or downloaded, i.e. an average of 51,833 per month.



Google Books – Number of visits to INTAL's publications in 2008



Google Books – Number of pages of INTAL's publications visited in 2008

Systems and Databases

Basic Instruments of Economic Integration in Latin America and the Caribbean.¹⁷ Since 1992, INTAL has been publishing organized basic juridical texts relevant to regional economic integration in Latin America and the Caribbean. In 1998, an updated version consisting of a database was uploaded to the Internet, which has been updated on a continuing basis on account of the number of agreements entered into or renewed by the countries in the region since then.



DATAINTAL: In 2008, the development of a new version of this system of Latin-American and the Caribbean foreign trade statistics was initiated so that it should have an open-access, web-based format. This system is scheduled to be ready for online use by March 2009, including data from 1997 to 2007. The information on the period 1992-1996 and of 2008 will be incorporated in the course of 2009.

Rules of Origin: This CD available for the public contains a database of all the information on rules of origin from 28 free trade agreements and a query and analysis software. All the agreements included comprise at least one American country, and the European Union Generalised System of Preferences is included as well. The CD also includes for reference a module with the Most Favored Nation (MFN) tariffs for 16 countries in the hemisphere, which can be updated by the user with tools for making comparisons.

Outreach Activities

The Institute's outreach activities were continued throughout 2008. That INTAL's users have access to updates of new publications available and of the events scheduled for the year is deemed vitally important. To this end, a large database of contacts was created in order to send them communications on the events on a regular basis, including access to electronic publications/agendas and materials related to such events. Through this database, the user can get permanent contact with the Institute and send his/her comments either by replying to these communications or by visiting the website to write his/her feedback in the section reserved for this purpose.



¹⁷ http://www.iadb.org/intal/detalle_instrumento.asp?idioma=esp&aid=1311&cid=237

ACRONYMS AND ABBREVIATIONS

ALADI	Latin American Integration Association
APEC	Asia-Pacific Economic Cooperation
ASCC	APEC Study Centers Consortium
CAF	Andean Development Corporation
CAN	Andean Community of Nations
CARI	Argentine Council for International Relations
CARICOM	The Caribbean Community
CEBRI	Brazilian Center for International Relations
CEPAL	Economic Commission for Latin America and the Caribbean
CIPPEC	Center for the Implementation of Public Policies Promoting Equity and Growth
COLADIC	Latin American Council of International and Comparative Law
CRNM	Caribbean Regional Negotiating Machinery
ELSA	The European Law Students' Association
ELSNIT	Euro-Latin Study Network on Integration and Trade
EUI	European University Institute
FOMERCO	MERCOSUR University Forum
FONPLATA	Financial Fund for the Development of the River Plate Basin
IICA	Inter-American Institute for Cooperation on Agriculture
IIRSA	Initiative for the Integration of Regional Infrastructure in South America
IMEF	MERCOSUR Training Institute
IPPC	International Plant Protection Convention
LAEBA	Latin America/Caribbean and Asia/Pacific Economics and Business Association
CACM	Central American Common Market
MERCOSUR	Southern Common Market
OIE	World Organisation for Animal Health
WTO	World Trade Organization
ORP/EUR	IDB – Office in Europe
OVE	IDB – The Office of Evaluation and Oversight
REDEALAP	Latin American and the Caribbean Studies Network on Asia-Pacific
VPC	IDB – Office of the Vice President for Countries
VPC/CID	IDB – Country Department Central America, Mexico, Panama and Dominican Republic
VPC/INL	IDB – Institute for the Integration of Latin America and the Caribbean - INTAL
VPS	IDB – Office of the Vice President for Sectors and Knowledge
VPS/INT	IDB – Integration and Trade Sector

